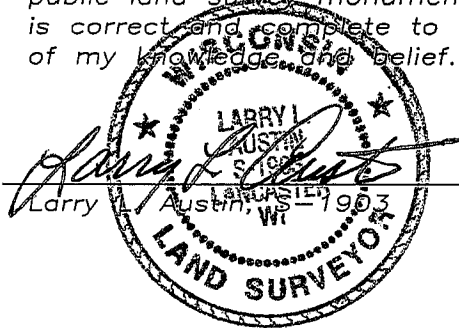


# U.S. PUBLIC LAND SURVEY MONUMENT RECORD

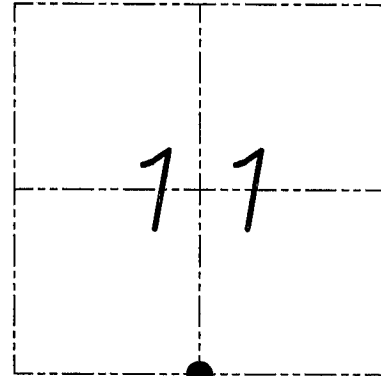
Section 11, Town 6 North Range 1 West, Town  
of Wingville, Grant County, Wisconsin

## CERTIFICATE

I, Larry L. Austin, do hereby certify that the corner location on this record was determined by me and/or under my direct supervision and that this U.S. public land survey monument record is correct and complete to the best of my knowledge and belief.



1-30-09  
date



● = CORNER LOCATION

## HISTORY OF CORNER

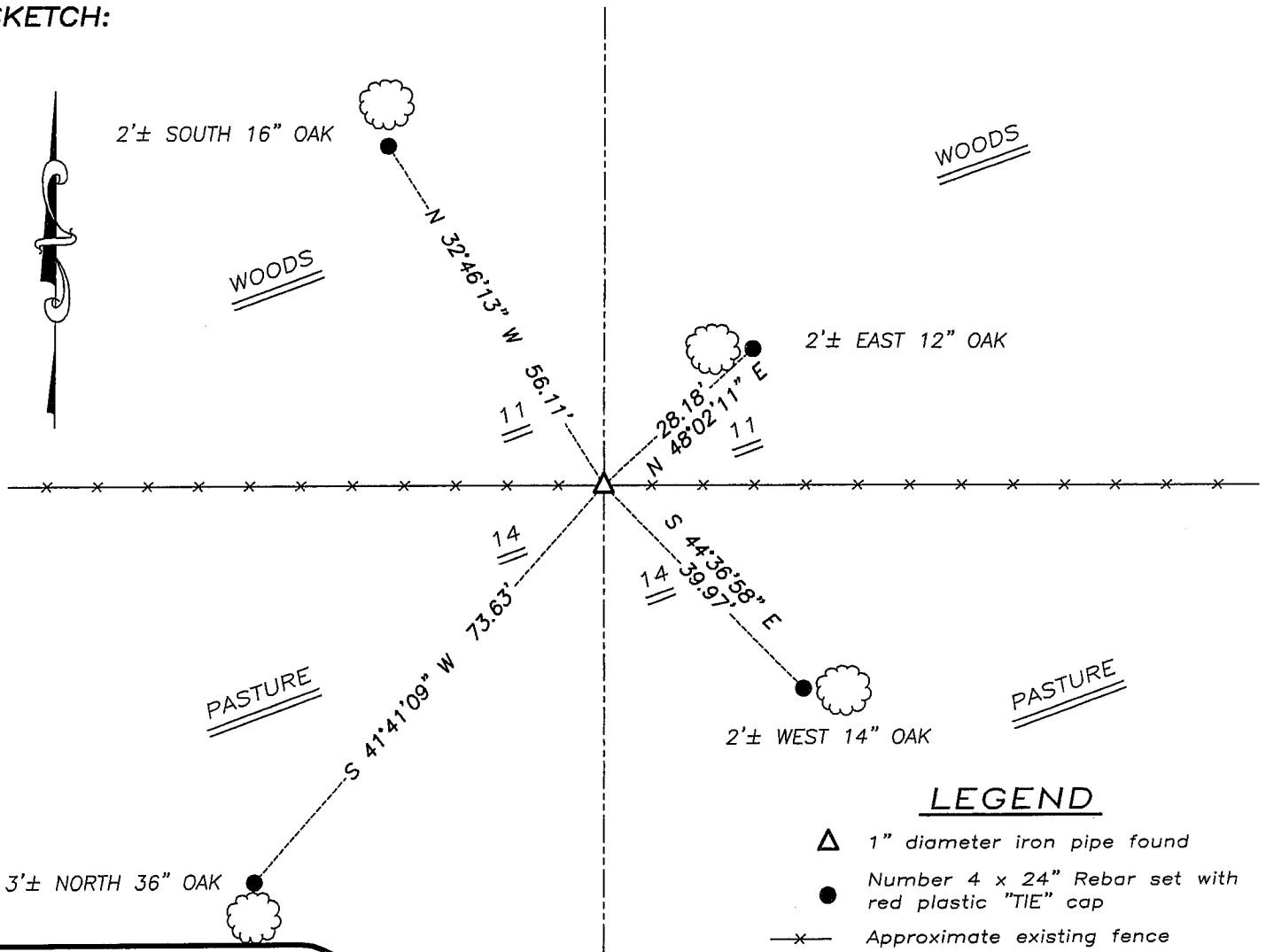
Corner was originally set in 1833 by Sibley.  
Bowden found an existing 1" iron pipe at this location.  
I found an error on my 2001 tiesheet. (monument in legend)

## CORNER EVIDENCE FOUND

I found the existing 1" iron pipe and accepted it's location.  
I verified this location using EDM & GPS methods.

DESCRIPTION OF CORNER AND WITNESS MONUMENTS, references and accessories used to perpetuate the original or re-established location of this corner. Witnesses to monument location Bobby Sedgwick & Brad Digman & Shane Austin

## SKETCH:



## LEGEND

- △ 1" diameter iron pipe found
- Number 4 x 24" Rebar set with red plastic "TIE" cap
- x— Approximate existing fence

NOT TO SCALE



**Austin**  
Engineering LLC

4211 HWY 81 E, LANCASTER, WI 53813  
PHONE 608-723-6363 FAX 608-723-6702

FIELDBOOK: SDR33, 2107  
G:\T6NR1W\11  
H:\TIE\T6NR1W\44

DRAWN BY: SW AUSTIN  
APPROVED: LL AUSTIN

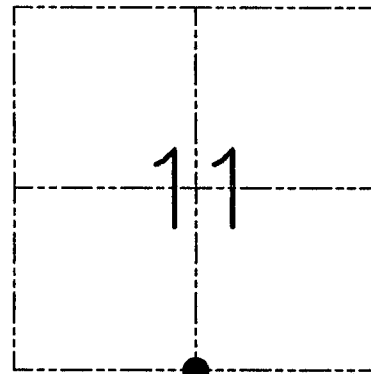
**U.S. PUBLIC LAND SURVEY MONUMENT RECORD - GRANT COUNTY, WI**  
**Section 11, Town 6 North Range 1 West, Town of Wingville**

**CERTIFICATE**

I, Larry L. Austin, do hereby certify that the corner location on this record was determined by me and/or under my direct supervision and that this U.S. public land survey monument record is correct and complete to the best of my knowledge and belief.

Dated this 21st day of August, 2004

*Larry L. Austin*  
 Larry L. Austin S-1903



● = CORNER LOCATION

**HISTORY OF CORNER ESTABLISHMENT**

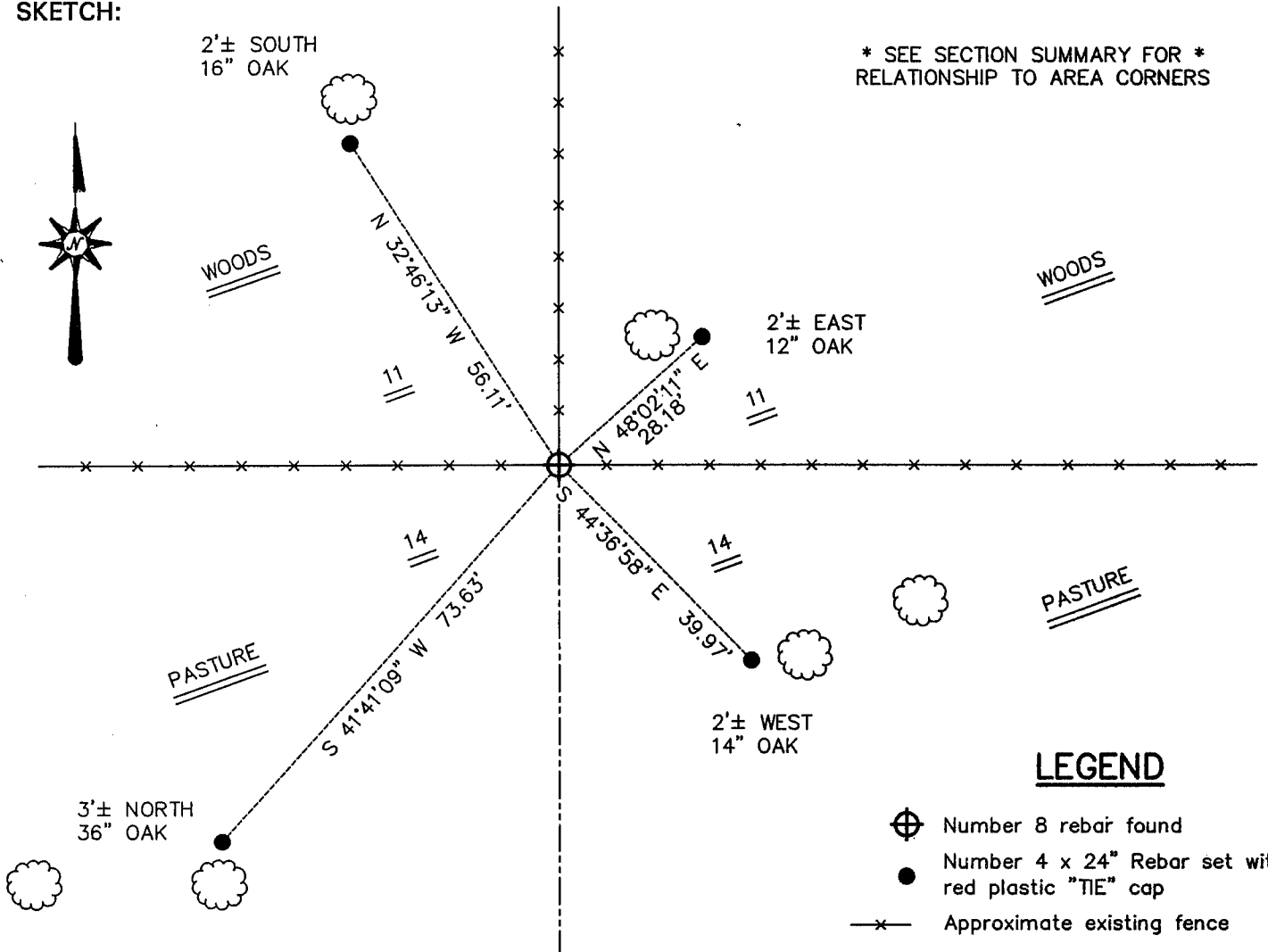
Corner was originally set in 1833 by Sibley. In 1981 Bruce Bowden found an existing 1" iron pipe at this location.

**DESCRIPTION OF CORNER EVIDENCE FOUND**

I found the existing 1" iron pipe and accepted it's location. I verified it's location using EDM & GPS methods.

**DESCRIPTION OF CORNER AND WITNESS MONUMENTS, references and accessories used to perpetuate the original or re-established location of this corner. Witnesses to the corner location Bobby Sedgwick & Shelby Blindert & Tim Fauver**

**SKETCH:**



\* SEE SECTION SUMMARY FOR \*  
 RELATIONSHIP TO AREA CORNERS

**LEGEND**

- ⊕ Number 8 rebar found
- Number 4 x 24" Rebar set with red plastic "TIE" cap
- x- Approximate existing fence

SKETCH NOT TO SCALE

**AUSTIN ENGINEERING, LLC**

4211 HWY 81 EAST, LANCASTER, WI 53813  
 PHONE 608-723-6363 FAX 608-723-6702

FIELDBOOK: SDR33, 2107

G: \T6NR1W\11  
 C: \SWA\TIE\T6NR1W\44  
 CREW: BS-SB-SA-TF

DRAWN BY: SW AUSTIN  
 APPROVED: LL AUSTIN

**CORNER NUMBER 44**