

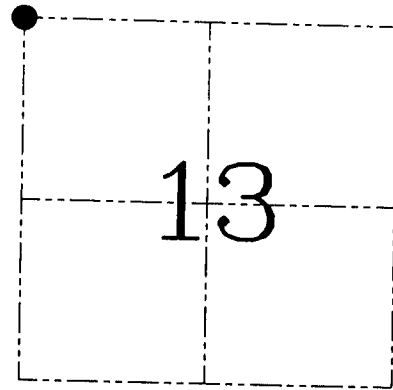
U.S. PUBLIC LAND SURVEY MONUMENT RECORD – GRANT COUNTY, WI
Section 13, Town 6 North Range 1 West, Town of Wingville

CERTIFICATE

I, Larry L. Austin, do hereby certify that the corner location on this record was determined by me and/or under my direct supervision and that this U.S. public land survey monument record is correct and complete to the best of my knowledge and belief.

Dated this 2nd day of August, 2002

Larry L. Austin
 Larry L. Austin S-1903



● = CORNER LOCATION

HISTORY OF CORNER ESTABLISHMENT

Corner was originally set in 1833 by Sibley. In 1856 Overton tied to the original corner. No other record of the corner was found.

DESCRIPTION OF CORNER EVIDENCE FOUND

I found a Cast Aluminum monument at this location. No record was found of this monument. I accepted it's location after an EDM & GPS traverse of the area.

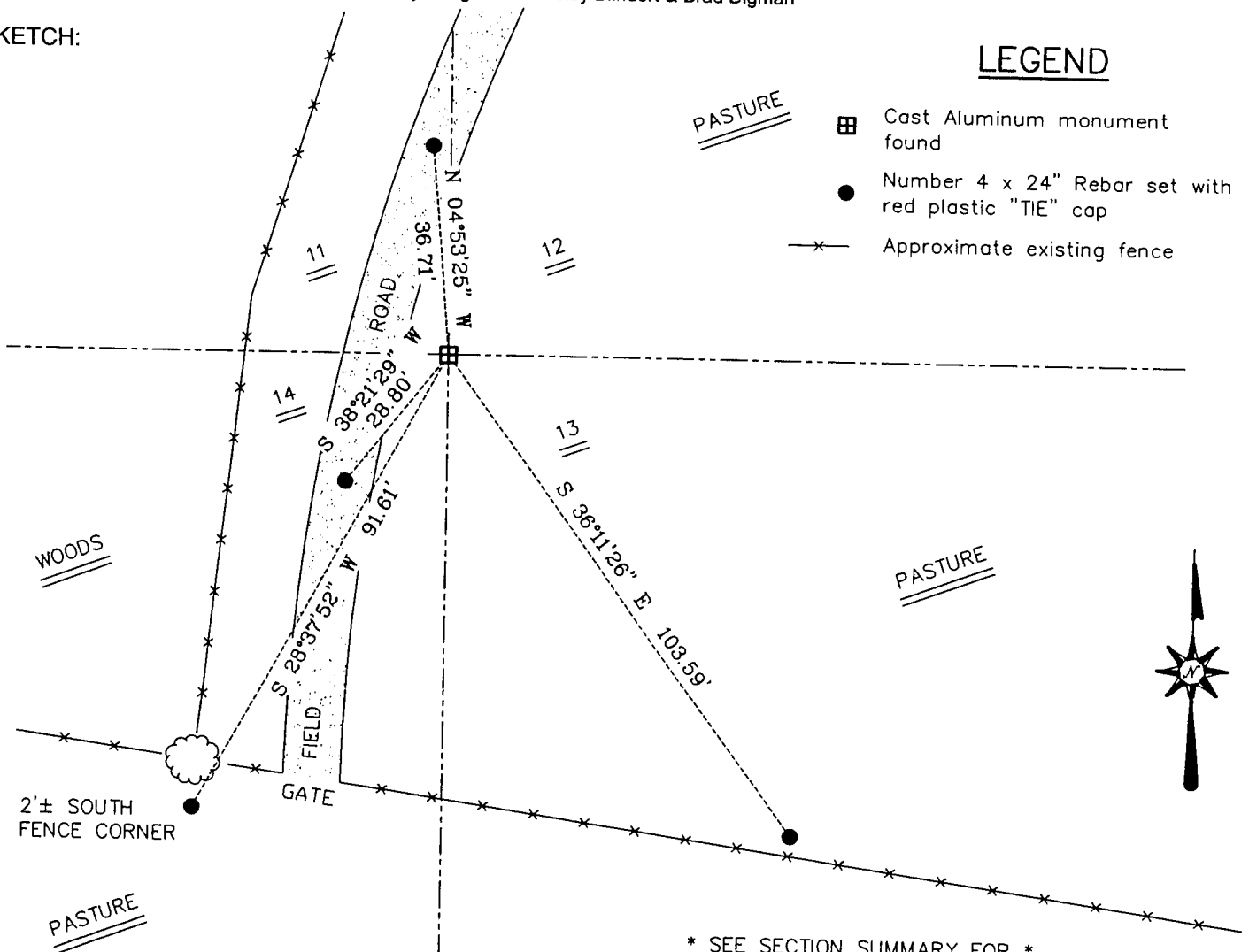
DESCRIPTION OF CORNER AND WITNESS MONUMENTS, references and accessories used to perpetuate the original or re-established location of this corner. Witnesses to the corner location Bobby Sedgwick & Shelby Blindert & Brad Digman

SKETCH:

LEGEND

PASTURE

- ▣ Cast Aluminum monument found
- Number 4 x 24" Rebar set with red plastic "TIE" cap
- x- Approximate existing fence



* SEE SECTION SUMMARY FOR *
 RELATIONSHIP TO AREA CORNERS

SKETCH NOT TO SCALE

AUSTIN ENGINEERING, LLC

4211 HWY 81 EAST, LANCASTER, WI 53813
 PHONE 608-723-6363 FAX 608-723-6702

FIELDBOOK: SDR33, 2135
 G: \T6NR1W\T6NR1W
 C: \SWA\TIE\T6NR1W\43
 CREW: BS-SB-SA-BD

DRAWN BY: SW AUSTIN
 APPROVED: LL AUSTIN

CORNER NUMBER 43

SECTION CORNER TIE SHEET

To the SW corner of Section 12, Town 6 North, Range 1 West, Wingville Township, Grant County, Wisconsin.

I, Terrance L. Genske, hereby certify that I have complied with the Wisconsin Statutes, Statutes of the United States, and the rules and regulations made by the Secretary of the Interior in the location of the corner shown below.

Terrance L. Genske
Terrance L. Genske
6/12/80



Description of Original Monument and Accessories

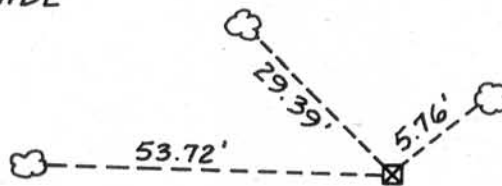
Wood post set by Sylvester Sibley on May 1, 1833
Burr oak 8N18E 3.20 ch.
Burr oak 8S48W 1.81 ch.

LEGEND

☒ ALUMINUM MONUMENT

Monument and Accessories Set

PK NAIL IN 18" APPLE TREE
1.5' UP S. SIDE



PK NAIL IN 18" APPLE TREE
.5' UP W. SIDE

PK NAIL IN 18" ELM TREE
1' UP S. SIDE

NOTE: MONUMENT SET
1" ABOVE GRADE



Description of Corner Evidence

Corner set by single proportionate measurement between the S 1/4 corner of 11-6-1 and the SE corner of 12-6-1.



Terrance L. Genske
6/17/80