

U.S. PUBLIC LAND SURVEY MONUMENT RECORD

(As Required By s. A-E 7.08, WI Adm. Code)

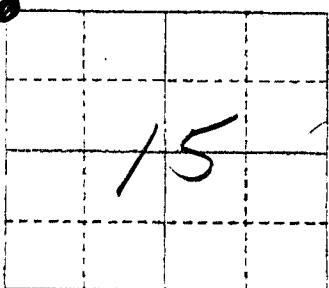
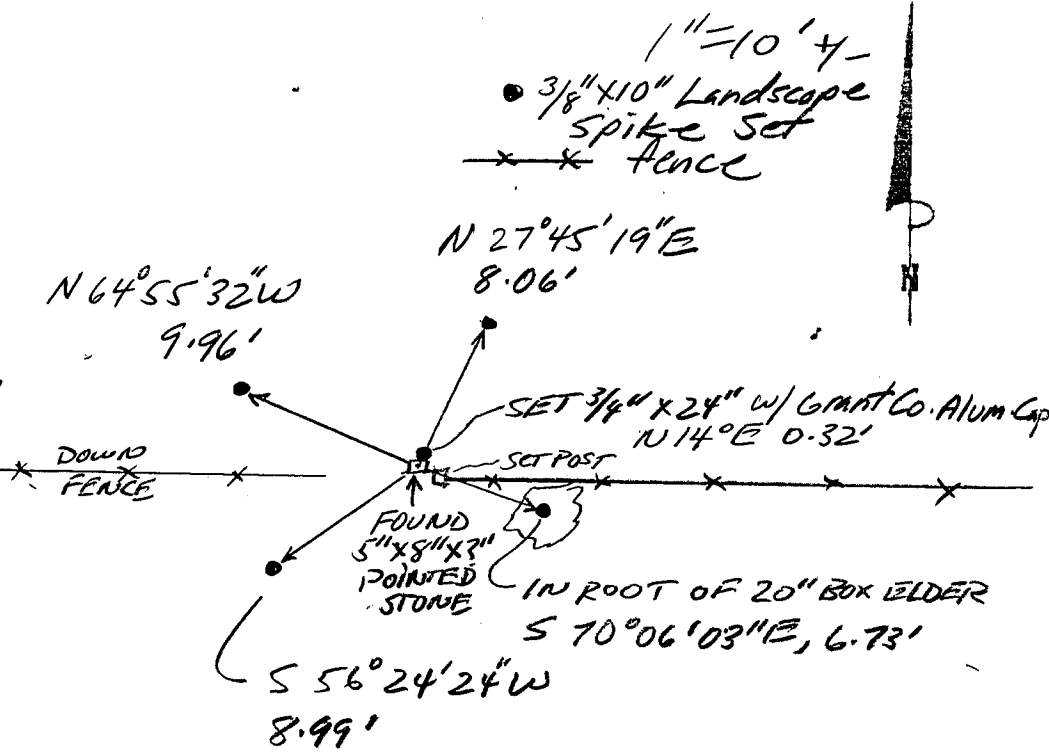
History of original corner establishment and subsequent restorations and description of any record, monument, occupational, testimonial or other evidence considered: *There are no recent survey records of this corner. Charlie Bickford, an older farmer, pointed out the approximate location of a pointed stone that was located in the fence opening between 2 farms. His grandfather had told him in the 1930's not to disturb the stone after the metal wagon wheel had hit it and that it was the section corner. The area was excavated and the stone was located about 1/2 foot below grade as field "run-off" had covered it. I placed a 3/4" rebar w/ Alum. cap near the stone to enable future magnetic detection. See section summary for relationships to other corners.*

Corner was: (Check All That Apply)

- Restored through acceptance of an obliterated evidence location
- Restored through acceptance of a found perpetuated location
- Considered a lost corner and reestablished through lost corner proportionate methods (include a plan view drawing showing distances and directions to other Public Land Survey Corners used for proportioning and determining the corner location)
- Restored or reestablished in a location that differs from a previous restoration or reestablishment (include a plan view drawing and indicate what was set and /or found)

Describe the monument and accessories used to perpetuate the location of this corner. (Include a plan view drawing and indicate what was set and/or found)

The NW
corner of Section 15
T. 6 N., R. 1 W.,
GRANT County, Wisconsin
Job ID: 99M-9
Book # 1



● = Location of Corner

Michael R. LaRosa
Type or print name) certify that the corner location shown on this record was determined by me or under my direction and control and that this U.S. Public Land Survey Monument Record is correct and complete to the best of my knowledge and belief.

Michael R. LaRosa 10/19/1999
Signature Date



Index No. 47