

OCT 26 1990

GRANT COUNTY GOVERNMENT CORNER RECORD

S 1/4 CORNER, SECTION 8, TOWNSHIP 6 NORTH, RANGE 1 WEST
TOWN, ~~CITY OR VILLAGE OF~~ WINGVILLE

TYPE OF MONUMENT: 3/4" X 24" IRON ROD ELEVATION-M.S.L. DATUM _____

STATE PLANE COORDINATES: N _____

WISCONSIN SOUTH ZONE E _____

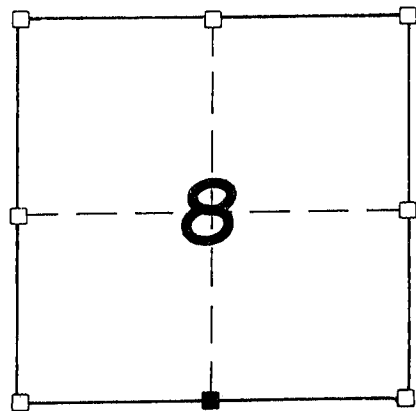
WITNESSES TO CORNER LOCATION

SEAN M. WALSH

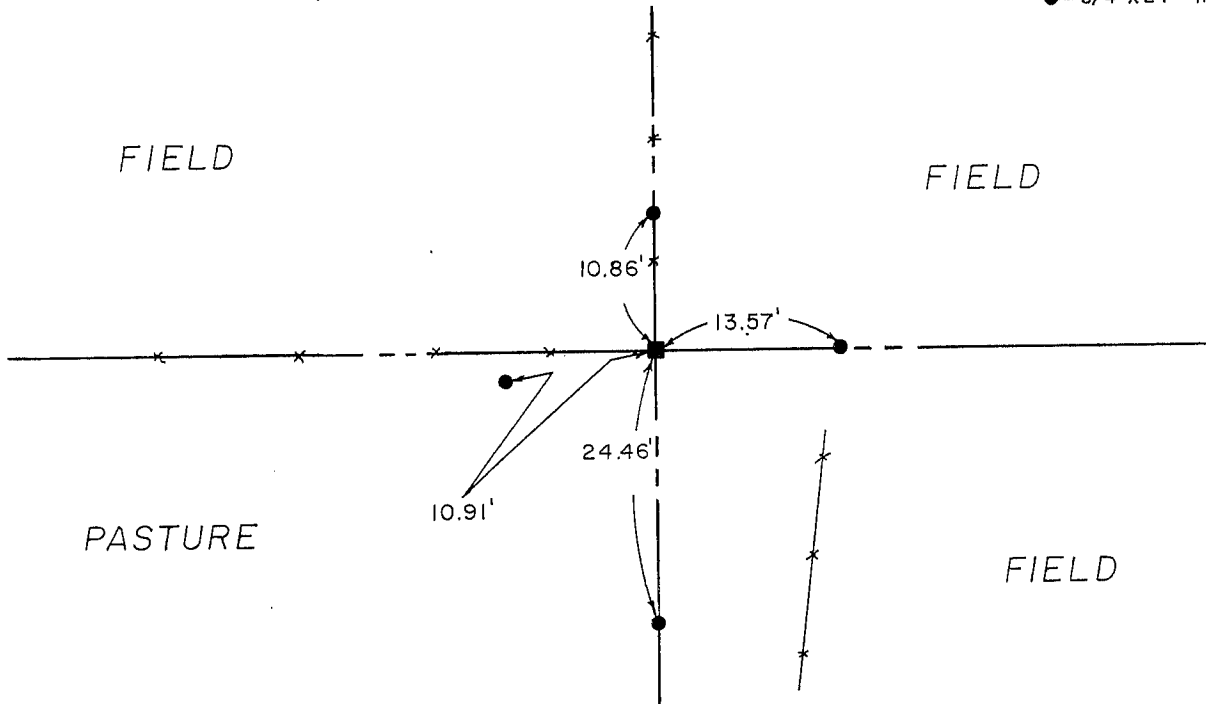
PATRICK J. DEDERICH



SECTION 8, T 6 N, R 1 W
TOWN OF WINGVILLE



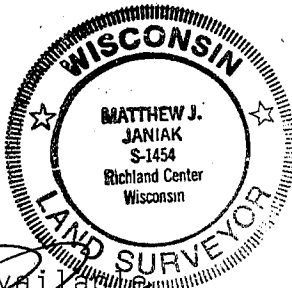
TIE SKETCH
(SHOW ALL HELPFUL FEATURES)



SURVEYOR'S CERTIFICATE
STATE OF WISCONSIN)
RICHLAND COUNTY)SS

SEAL S-1454

I, Matthew J. Janaik, DO HEREBY CERTIFY THAT the above corner
has been established under my direction and supervision
in accordance with the information contained hereon and
that this information is correct to the best of my
information, knowledge and belief. The above corner was
established at the occupied corner which was the best available
evidence.



DATED THIS 3rd DAY OF October, 19 90

Matthew J. Janaik
REGISTERED LAND SURVEYOR

