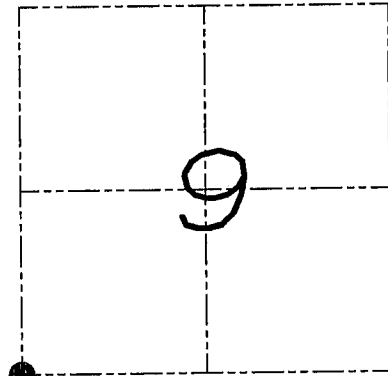


U.S. PUBLIC LAND SURVEY MONUMENT RECORD

Section 9, Town 6 North Range 1 West, Town of Wingville, Grant County, Wisconsin

CERTIFICATE

I, Larry L. Austin, do hereby certify that the corner location on this record was determined by me and/or under my direct supervision and that this U.S. public land survey monument record is correct and complete to the best of my knowledge and belief.



● = CORNER LOCATION



HISTORY OF CORNER

Corner was originally set in the first quarter of 1832 by Sibley. In 1882 J.C. Scott set a stone monument. No other record of the corner was found.

CORNER EVIDENCE FOUND

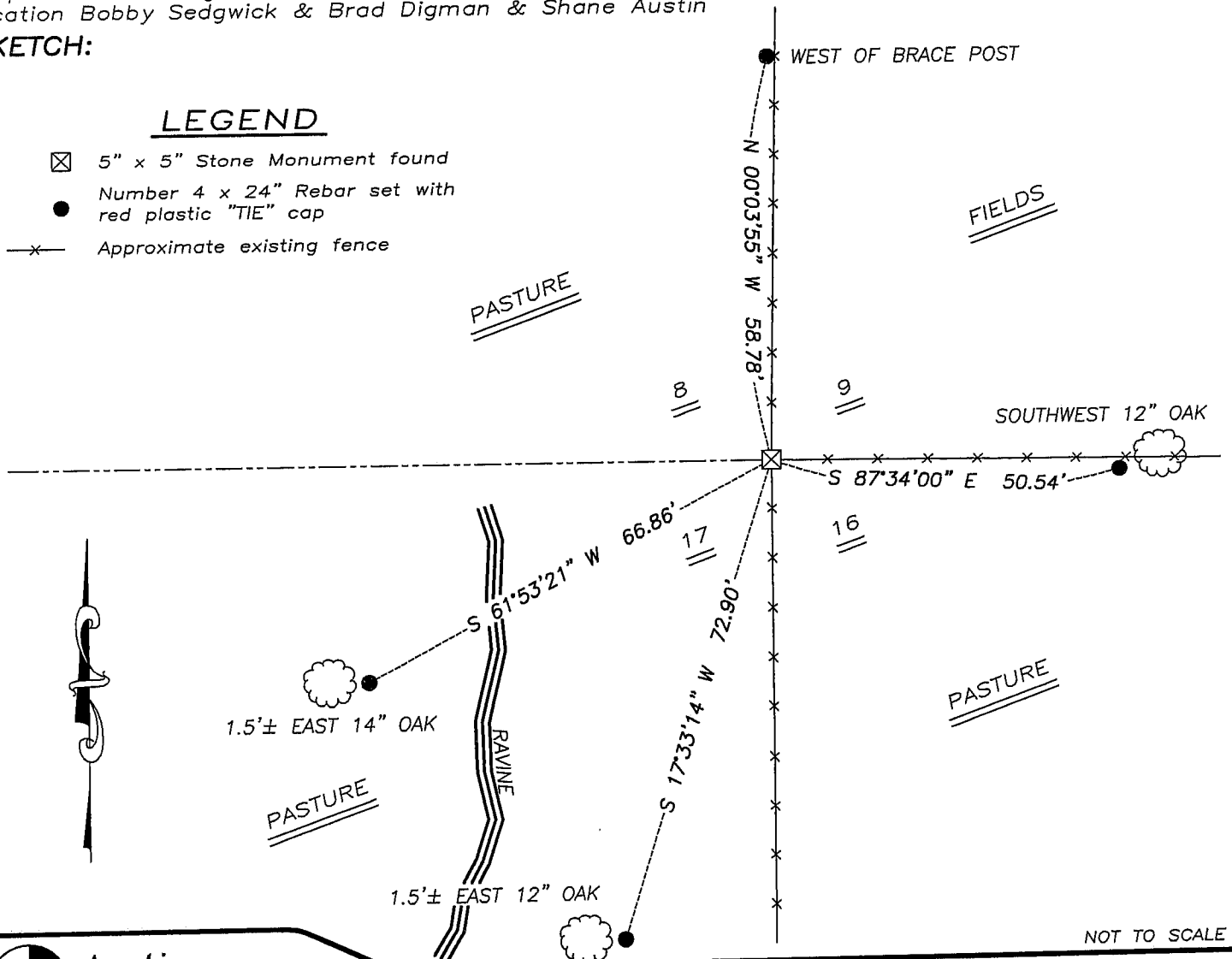
I found the existing stone monument at an occupied fence corner. I accepted it's location after verification to the adjoining corners.

DESCRIPTION OF CORNER AND WITNESS MONUMENTS, references and accessories used to perpetuate the original or re-established location of this corner. Witnesses to monument location Bobby Sedgwick & Brad Digman & Shane Austin

SKETCH:

LEGEND

- ☒ 5" x 5" Stone Monument found
- Number 4 x 24" Rebar set with red plastic "TIE" cap
- x- Approximate existing fence



NOT TO SCALE



Austin Engineering LLC

4211 HWY 81 E, LANCASTER, WI 53813
PHONE 608-723-6363 FAX 608-723-6702

JOB NUMBER 08S265
FIELDBOOK: TDSR, 2803
G:\T7NR1W\29
H:\TIE\T6NR1W\49

DRAWN BY: SW AUSTIN
APPROVED: LL AUSTIN