

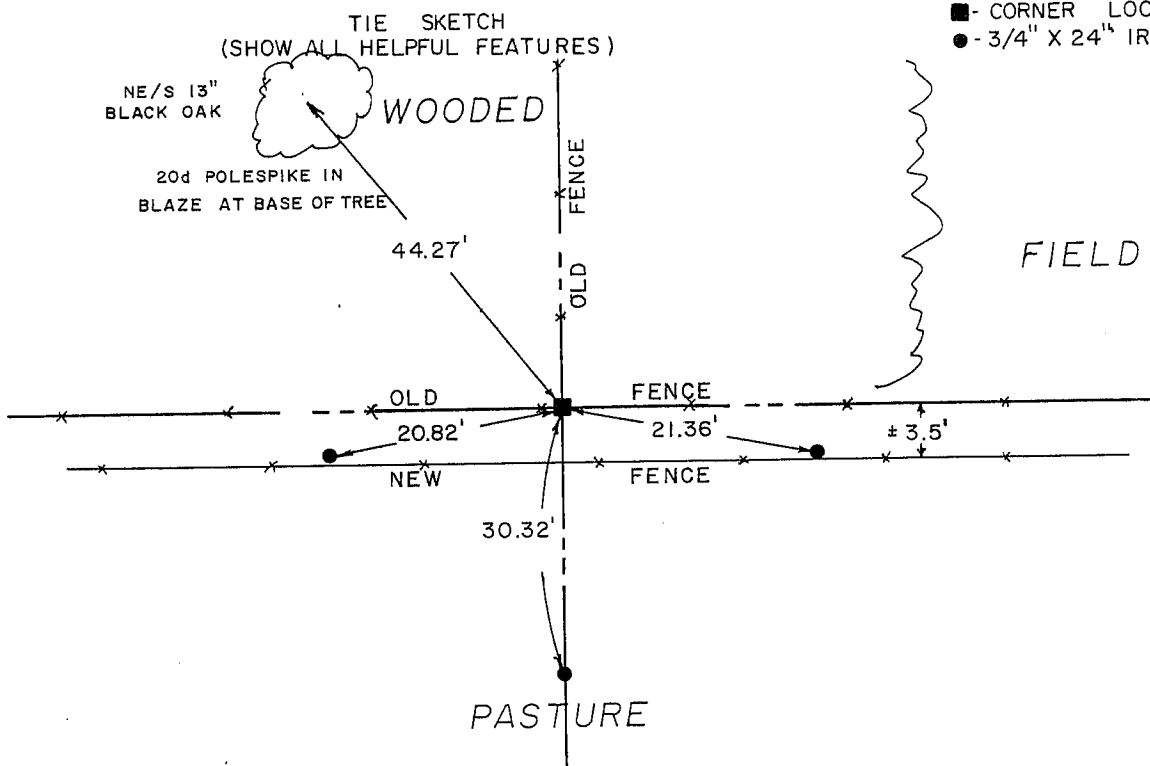
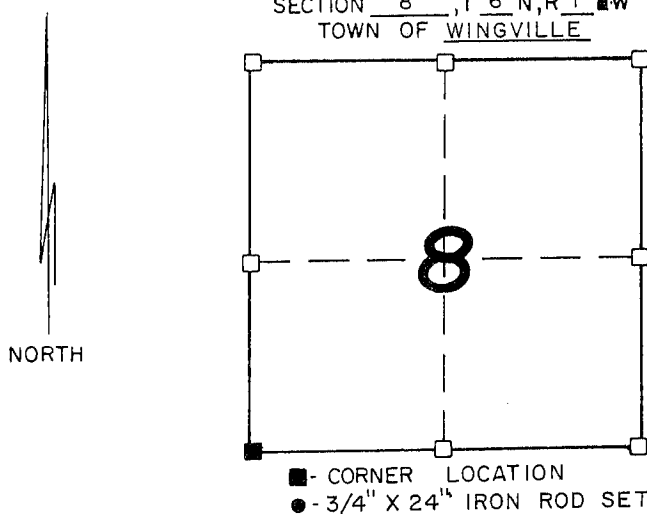
OCT 26 1990

# GRANT COUNTY GOVERNMENT CORNER RECORD

SW CORNER, SECTION 8, TOWNSHIP 6 NORTH, RANGE 1 ~~EAST~~ - WEST,  
 TOWN, ~~CITY OF WINGVILLE~~ OF WINGVILLE  
 TYPE OF MONUMENT: 3/4" X 24" IRON ROD ELEVATION-M.S.L. DATUM \_\_\_\_\_  
 STATE PLANE COORDINATES: N \_\_\_\_\_  
 WISCONSIN SOUTH ZONE E \_\_\_\_\_

WITNESSES TO CORNER LOCATION

SEAN M. WALSH \_\_\_\_\_  
 PATRICK J. DEDERICH \_\_\_\_\_



SURVEYOR'S CERTIFICATE  
 STATE OF WISCONSIN)  
 RICHLAND COUNTY )SS

SEAL S- 1454

I, Matthew J. Janiak, DO HEREBY CERTIFY THAT the above corner  
has been established under my direction and supervision  
in accordance with the information contained hereon and  
that this information is correct and true to the best of  
my knowledge, information and belief. the above corner has  
established at the occupied location which fits very well with  
the rest of the SW 1/4 of section.



DATED THIS 3rd DAY OF October, 19 90

Matthew J. Janiak  
 REGISTERED LAND SURVEYOR

