

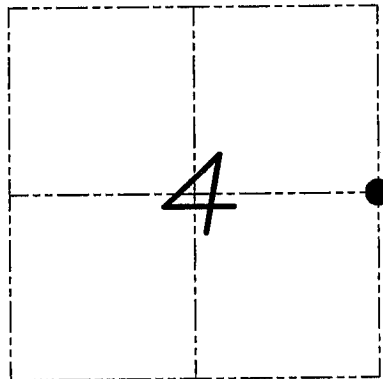
U.S. PUBLIC LAND SURVEY MONUMENT RECORD

Section 4, Town 6 North Range 1 West, Town of Wingville, Grant County, Wisconsin

CERTIFICATE

I, Larry L. Austin, do hereby certify that the corner location on this record was determined by me and/or under my direct supervision and that this U.S. public land survey monument record is correct and complete to the best of my knowledge and belief.

Larry L. Austin
 Larry L. Austin, 11-19-09 date
 WISCONSIN
 LARRY L. AUSTIN
 5-1903
 LANCASTER
 WI
 LAND SURVEYOR



● = CORNER LOCATION

HISTORY OF CORNER

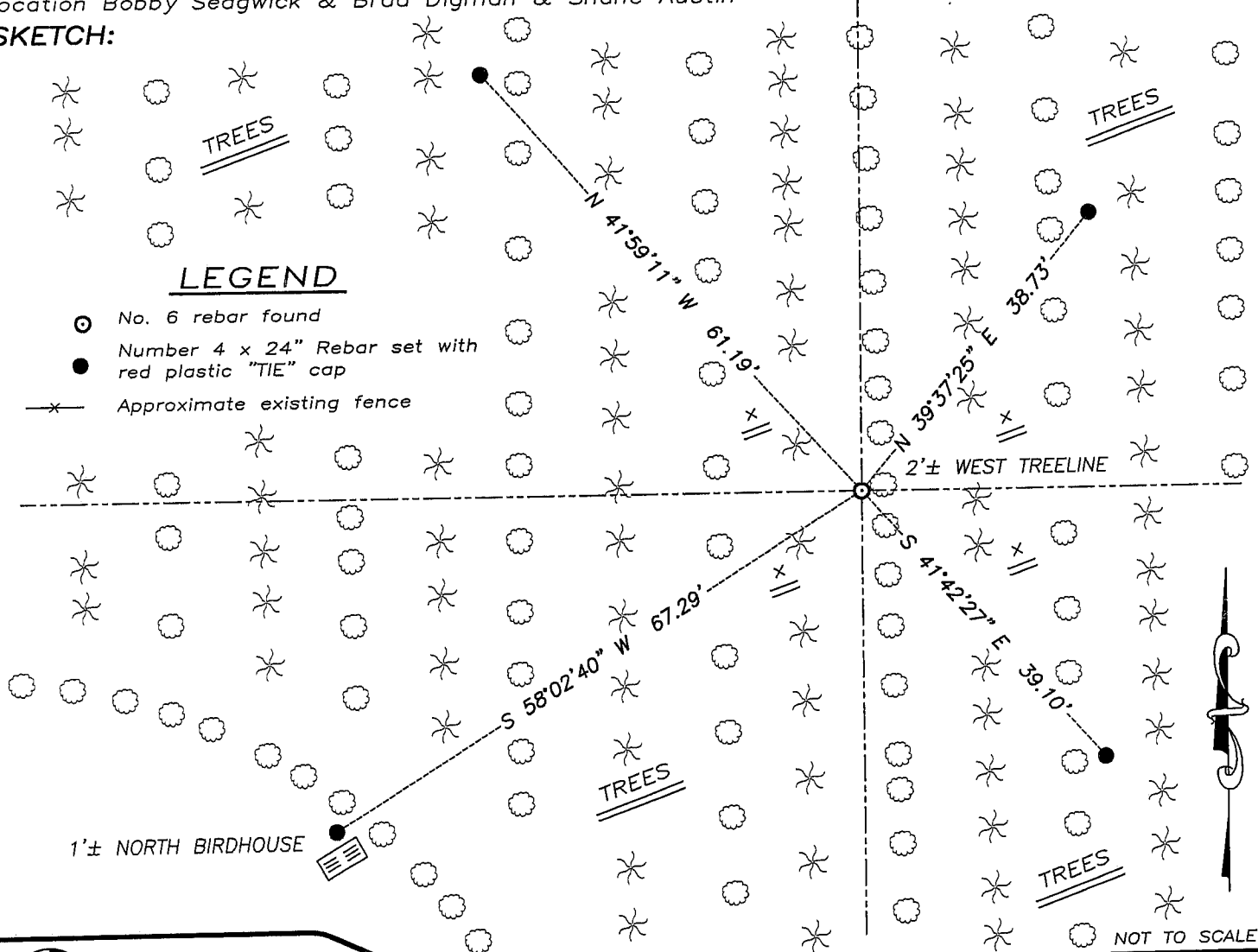
Corner was originally set in the first quarter of 1832 by Sibley. I set a No. 6 rebar in the 1990's. No other record of the corner was found.

CORNER EVIDENCE FOUND

I found the existing No. 6 rebar and accepted it's location using EDM & GPS methods.

DESCRIPTION OF CORNER AND WITNESS MONUMENTS, references and accessories used to perpetuate the original or re-established location of this corner. Witnesses to monument location Bobby Sedgwick & Brad Digman & Shane Austin

SKETCH:



Austin Engineering LLC

4211 HWY 81 E, LANCASTER, WI 53813
 PHONE 608-723-6363 FAX 608-723-6702

JOB NUMBER 08S265
 FIELDBOOK: TDSR, 2803
 G:\T7NR1W\29
 H:\TIE\T6NR1W\17

DRAWN BY: SW AUSTIN
 APPROVED: LL AUSTIN