

**U.S. PUBLIC LAND SURVEY MONUMENT RECORD – GRANT COUNTY, WI**

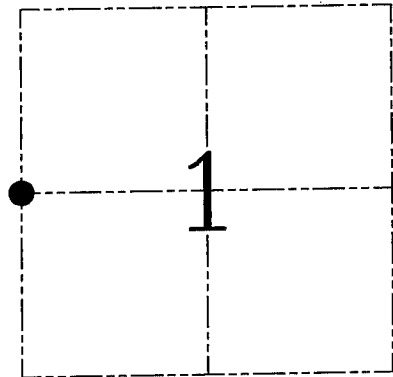
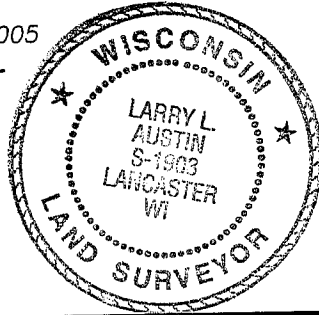
**Section 1, Town 6 North Range 1 West, Town of Wingville**

CERTIFICATE

I, Larry L. Austin, do hereby certify that the corner location on this record was determined by me and/or under my direct supervision and that this U.S. public land survey monument record is correct and complete to the best of my knowledge and belief.

Dated this 13th day of January, 2005

*Larry L. Austin*  
Larry L. Austin S-1903



● = CORNER LOCATION

HISTORY OF CORNER ESTABLISHMENT

Corner was originally set in 1833 by Sibley. In 1870 Allen tied to the corner. No other record of the corner was found.

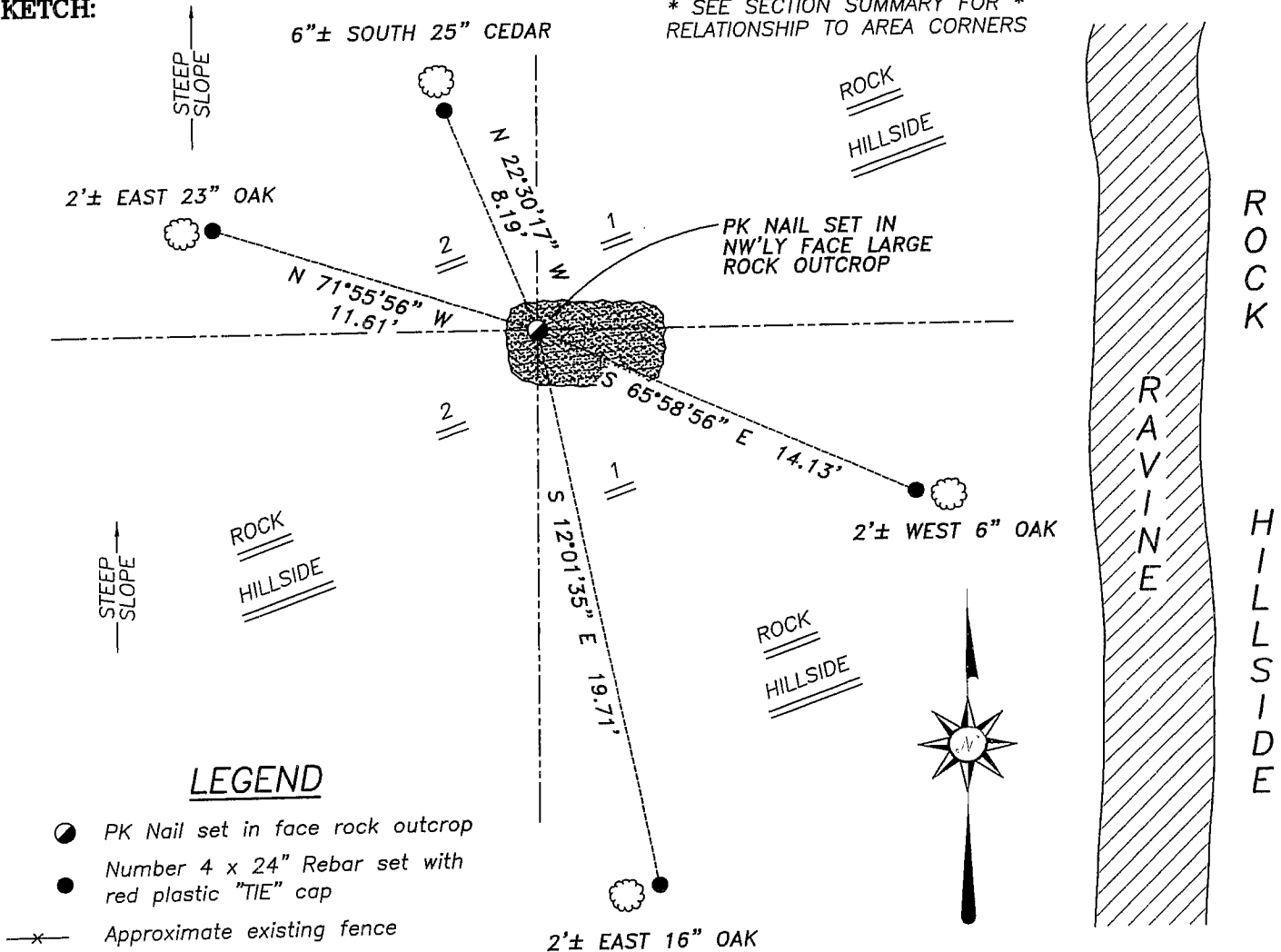
DESCRIPTION OF CORNER EVIDENCE FOUND

I reset the corner proportionately and on-line between the Northwest and Southwest corners of this section. Verified this location using EDM & GPS methods.

DESCRIPTION OF CORNER AND WITNESS MONUMENTS, references and accessories used to perpetuate the original or re-established location of this corner. Witnesses to corner location Bobby Sedgwick & Brad Digman & Shane Austin

**SKETCH:**

\* SEE SECTION SUMMARY FOR \*  
RELATIONSHIP TO AREA CORNERS



LEGEND

- PK Nail set in face rock outcrop
- Number 4 x 24" Rebar set with red plastic "TIE" cap
- \*— Approximate existing fence

SKETCH NOT TO SCALE

**Austin Engineering LLC**  
4211 HWY 81 E, LANCASTER, WI 53813  
PHONE 608-723-6363 FAX 608-723-6702

JOB NUMBER: 05S288-ESSER  
FIELDBOOK: TDSR, 2514  
G:\T6NR1W\01  
H:\TIE\T6NR1W\19

DRAWN BY: ML DIGMAN  
APPROVED: LL AUSTIN