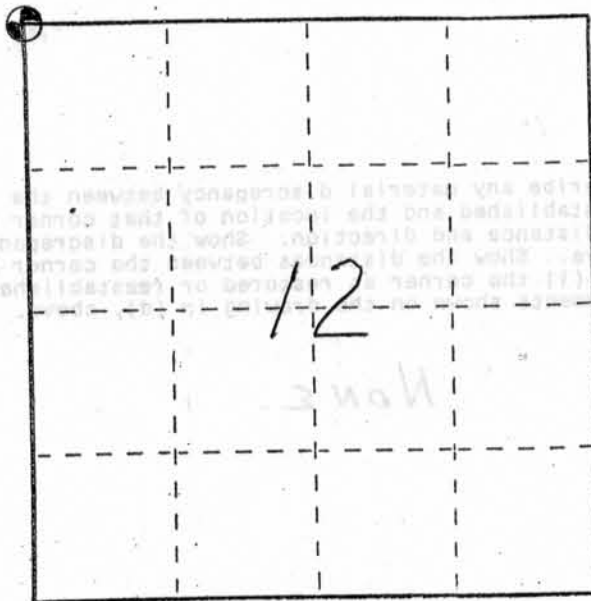


U. S. PUBLIC LAND SURVEY MONUMENT RECORD

INSTRUCTIONS: This record shall show the location of the corner and shall include all of the following nine elements (a through i).

- (a) Identify the corner by reference to the U.S. public land survey system.
- ⊙ = Corner monument restored.

NORTHWEST CORNER OF
 SECTION 12, TOWN 6 NORTH,
 RANGE 1 WEST, WINGVILLE
 TOWNSHIP, GRANT COUNTY,
 WISCONSIN.



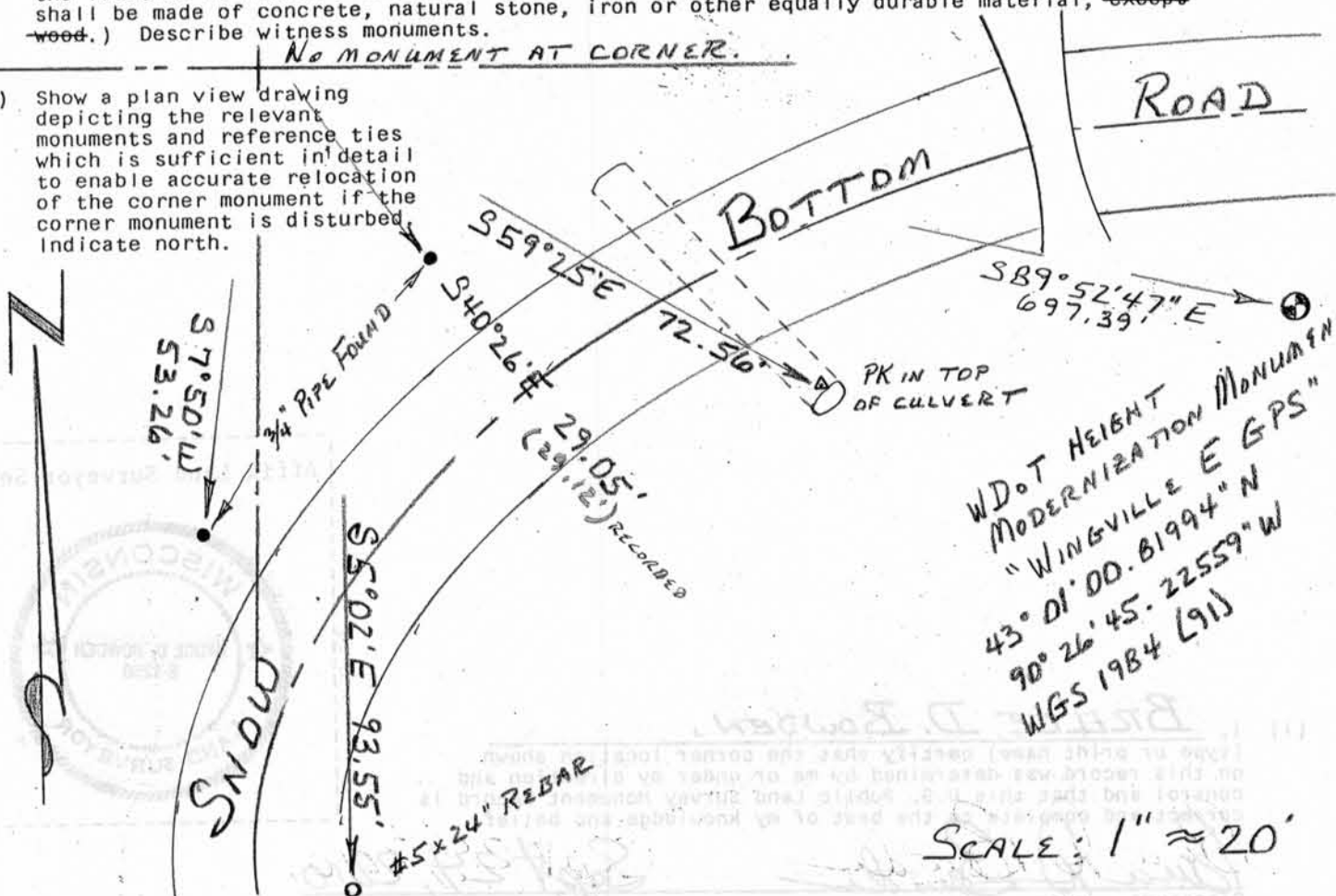
- (b) Describe any record evidence, monument evidence, occupational evidence, testimonial evidence or any other material evidence you considered, and whether the monument was found or placed.

CORNER IS AS DESCRIBED ON TWO PREVIOUS MONUMENT RECORDS. MONUMENTS HAVE BEEN DISPLACED DUE TO EROSION THAT HAS CREATED A GULLY WHICH WILL CONTINUALLY GROW LARGER. ADDITIONAL TIES HAVE BEEN ADDED AS SHOWN.

- (c) In the plan view drawing below, provide reference ties to at least 4 witness monuments, or, if the location is within a municipality, to at least 2 witness monuments. (Witness monuments shall be made of concrete, natural stone, iron or other equally durable material, ~~except wood.~~) Describe witness monuments.

NO MONUMENT AT CORNER.

- (d) Show a plan view drawing depicting the relevant monuments and reference ties which is sufficient in detail to enable accurate relocation of the corner monument if the corner monument is disturbed. Indicate north.

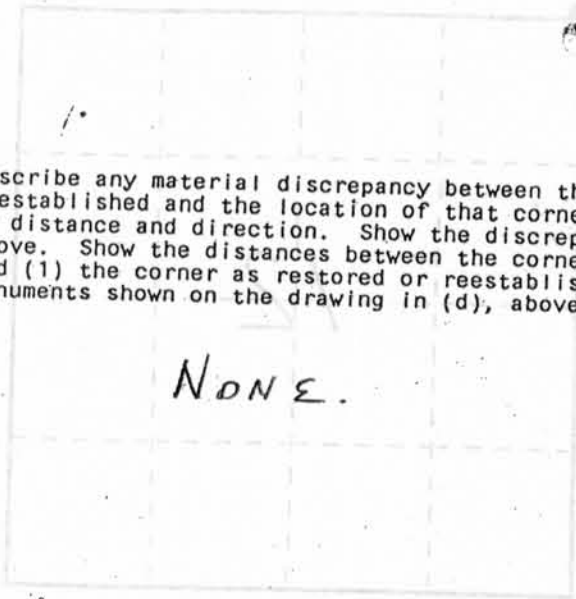


SEP 30 2010

U. S. PUBLIC LAND SURVEY MONUMENT RECORD

This record shall show the location of the corner and shall include all of the following items elements in through (f).

Identify the corner by reference to the U.S. Public Land Survey System. Corner monument restored.



(e) Describe any material discrepancy between the location of the corner as restored or reestablished and the location of that corner as previously restored or reestablished by distance and direction. Show the discrepancy on the plan view drawing under (d), above. Show the distances between the corner as previously restored or reestablished and (1) the corner as restored or reestablished, and (2) to at least 2 of the witness monuments shown on the drawing in (d), above.

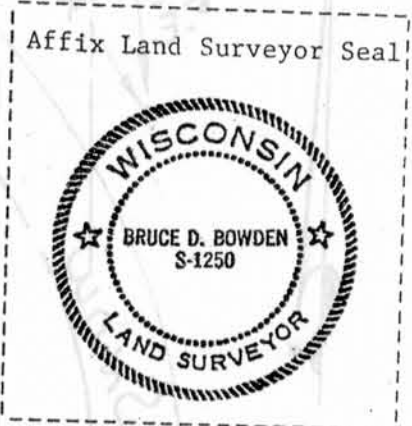
NONE.

(f) Was the corner restored through acceptance of (1) an obliterated evidence location, or, (2) a found perpetuated location?

(2) A FOUND PERPETUATED LOCATION

(g&h) Was the corner reestablished through lost corner proportionate methods? If so, show the method, including the directions and distances to other public land survey corners used as evidence or used for proportioning in determining the corner location?

No



(i) I, BRUCE D. BOWDEN,
(type or print name) certify that the corner location shown on this record was determined by me or under my direction and control and that this U.S. Public Land Survey Monument Record is correct and complete to the best of my knowledge and belief.

Bruce D. Bowden
Signature

Sept 24, 2010
Date

U.S. PUBLIC LAND SURVEY MONUMENT RECORD

(AS REQUIRED BY s.A-E 7.08, WI. ADM. CODE)

HISTORY OF ORIGINAL CORNER ESTABLISHMENT AND SUBSEQUENT RESTORATIONS AND DESCRIPTION OF ANY RECORD, MONUMENT, OCCUPATION, TESTIMONIAL OR OTHER EVIDENCE CONSIDERED

CORNER MONUMENT AND ALL TIES WERE DESTROYED IN THE AREA RESTORED TO BRUCE BOWDEN LOCATION PER SKETCH BELOW.

COORDINATES ARE ESTABLISHED TO THE CORNER AND WITNESS TIES AS SHOWN BELOW

BEARING REFERENCE AND COORDINATES ARE GRANT COUNTY COORDINATE SYSTEM NAD 83(91) ENGLISH SYSTEM

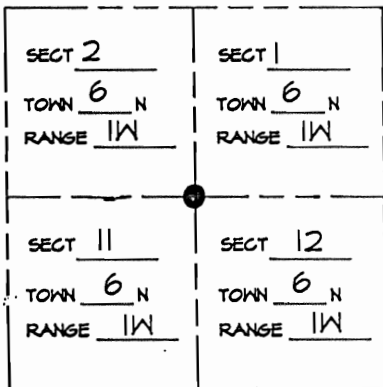
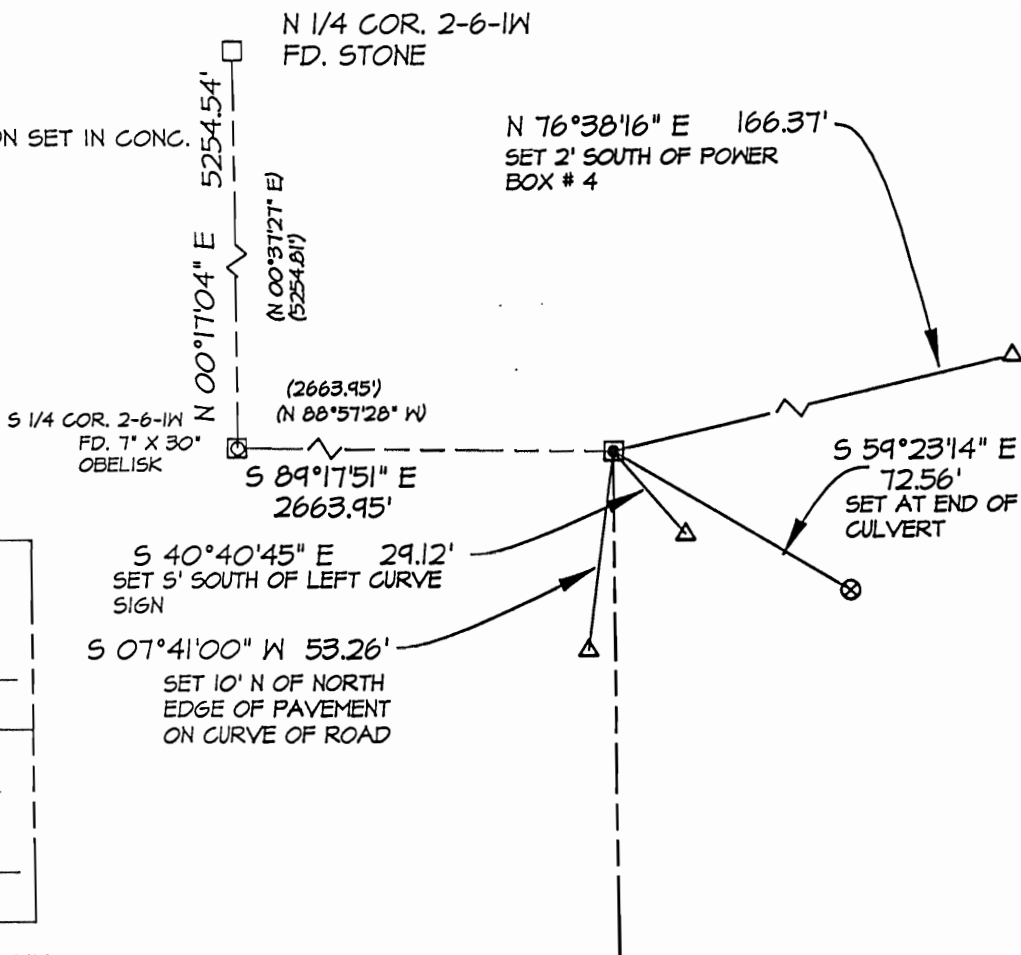
CORNER WAS: (CHECK ALL THAT APPLY)

- RESTORED THROUGH ACCEPTANCE OF AN OBLITERATED EVIDENCE LOCATION
- RESTORED THROUGH ACCEPTANCE OF A FOUND PERPETUATED LOCATION CONSIDERED A LOST CORNER AND REESTABLISHED THROUGH LOST CORNER PROPORTIONATE METHODS (INCLUDE A PLAN VIEW DRAWING SHOWING BEARING & DISTANCE TO OTHER PUBLIC LAND SURVEY CORNERS)
- USED FOR PROPORTIONING AND DETERMINING THE CORNER LOCATION
- RESTORED OR REESTABLISHED IN A LOCATION THAT DIFFERS FROM A PREVIOUS RESTORATION OR REESTABLISHMENT (INCLUDE A PLAN VIEW DRAWING AND INDICATE WHAT WAS SET AND/OR FOUND)

Describe the monument and accessories used to perpetuate the location of the corner. (include a plan view drawing and indicated what was set and/or found)

LEGEND:

- SET 3/4"φ IRON PIPE
- FOUND STONE MONUMENT
- FOUND 6' TALL ANGLE IRON SET IN CONC.
- SET 7/8"X24" REBAR
- () RECORDED AS
- ⊗ SET "PK" NAIL
- x—x— FENCE
- ▲ FOUND 1" IRON PIPE



- = LOCATION OF CORNER
- THE SE COR. OF SECT 2 T 6 N, R 1W
- THE SW COR. OF SECT 1 T 6 N, R 1W
- THE NW COR. OF SECT 12 T 6 N, R 1W
- THE NE COR. OF SECT 11 T 6 N, R 1W

GRANT COUNTY, WISCONSIN
 JOB ID: OBS-084 BOOK #: 2008-3 P.56

I, LAURENCE E SCHMIT CERTIFY THAT THE CORNER LOCATION SHOWN ON THIS RECORD WAS DETERMINED BY ME OR UNDER MY DIRECTION AND CONTROL AND THAT THIS U.S. PUBLIC LAND SURVEY MONUMENT RECORD IS CORRECT AND COMPLETE TO THE BEST OF MY KNOWLEDGE AND BELIEF.

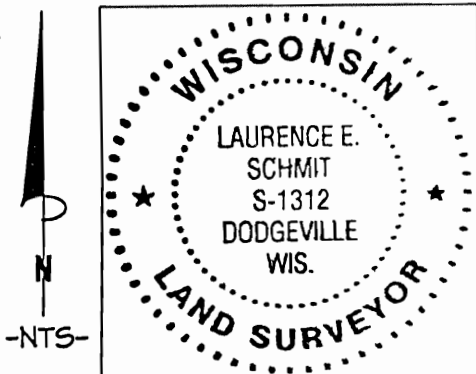
Laurence E Schmit

SIGNATURE

revised 5-19-09

DATE:

SCALE: 1" = 50'



LAND SURVEYORS SEAL

INDEX NUMBER 23

U.S. PUBLIC LAND SURVEY MONUMENT RECORD

(AS REQUIRED BY s.A-E 7.08, WI. ADM. CODE)

HISTORY OF ORIGINAL CORNER ESTABLISHMENT AND SUBSEQUENT RESTORATIONS AND DESCRIPTION OF ANY RECORD, MONUMENT, OCCUPATION, TESTIMONIAL OR OTHER EVIDENCE CONSIDERED

CORNER MONUMENT AND ALL TIES WERE DESTROYED IN THE AREA RESTORED TO BRUCE BOWDEN LOCATION PER SKETCH BELOW.

COORDINATES ARE ESTABLISHED TO THE CORNER AND WITNESS TIES AS SHOWN BELOW

BEARING REFERENCE AND COORDINATES ARE GRANT COUNTY COORDINATE SYSTEM NAD 83(91) ENGLISH SYSTEM

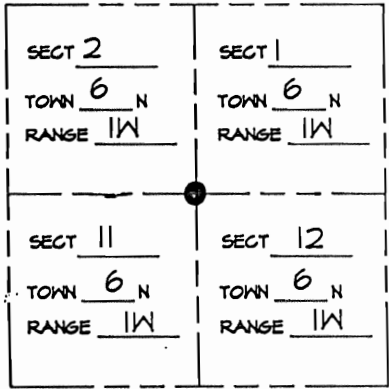
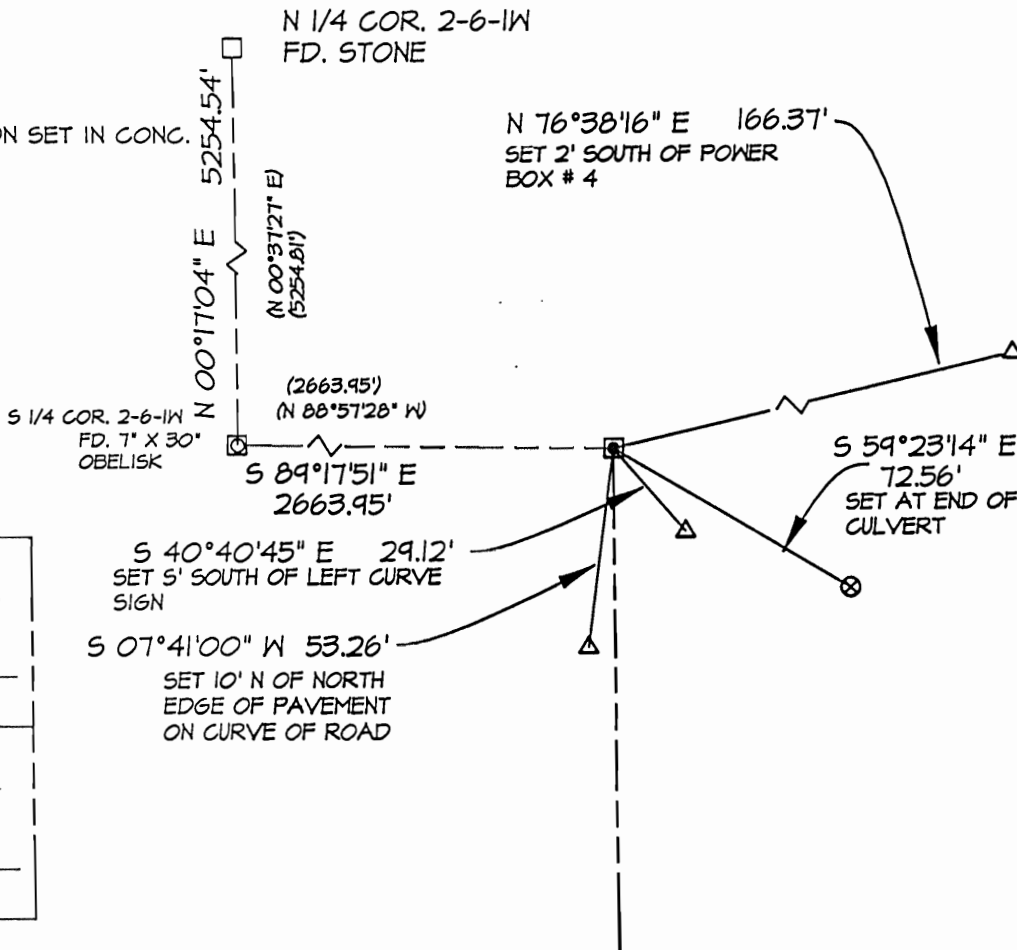
CORNER WAS: (CHECK ALL THAT APPLY)

- RESTORED THROUGH ACCEPTANCE OF AN OBLITERATED EVIDENCE LOCATION
- RESTORED THROUGH ACCEPTANCE OF A FOUND PERPETUATED LOCATION CONSIDERED A LOST CORNER AND REESTABLISHED THROUGH LOST CORNER PROPORTIONATE METHODS (INCLUDE A PLAN VIEW DRAWING SHOWING BEARING & DISTANCE TO OTHER PUBLIC LAND SURVEY CORNERS)
- USED FOR PROPORTIONING AND DETERMINING THE CORNER LOCATION
- RESTORED OR REESTABLISHED IN A LOCATION THAT DIFFERS FROM A PREVIOUS RESTORATION OR REESTABLISHMENT (INCLUDE A PLAN VIEW DRAWING AND INDICATE WHAT WAS SET AND/OR FOUND)

Describe the monument and accessories used to perpetuate the location of the corner. (include a plan view drawing and indicated what was set and/or found)

LEGEND:

- SET 3/4"φ IRON PIPE
- FOUND STONE MONUMENT
- FOUND 6' TALL ANGLE IRON SET IN CONC.
- SET 7/8"X24" REBAR
- () RECORDED AS
- ⊗ SET "PK" NAIL
- x—x— FENCE
- ▲ FOUND 1" IRON PIPE



- = LOCATION OF CORNER
- THE SE COR. OF SECT 2 T 6 N, R 1W
- THE SW COR. OF SECT 1 T 6 N, R 1W
- THE NW COR. OF SECT 12 T 6 N, R 1W
- THE NE COR. OF SECT 11 T 6 N, R 1W

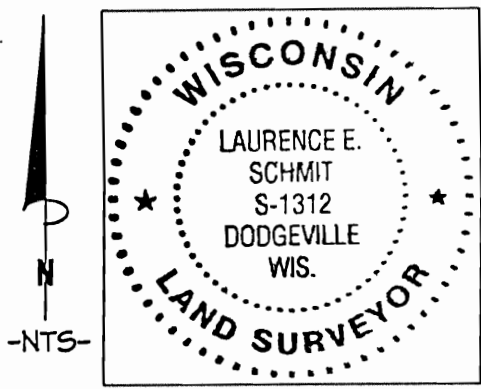
GRANT COUNTY, WISCONSIN
 JOB ID: OBS-084 BOOK #: 2008-3 P.56

I, LAURENCE E SCHMIT CERTIFY THAT THE CORNER LOCATION SHOWN ON THIS RECORD WAS DETERMINED BY ME OR UNDER MY DIRECTION AND CONTROL AND THAT THIS U.S. PUBLIC LAND SURVEY MONUMENT RECORD IS CORRECT AND COMPLETE TO THE BEST OF MY KNOWLEDGE AND BELIEF.

Laurence E Schmit

SIGNATURE revised 5-19-09 DATE:

SCALE: 1" = 50'



LAND SURVEYORS SEAL
 INDEX NUMBER 23

U. S. PUBLIC LAND SURVEY MONUMENT RECORD

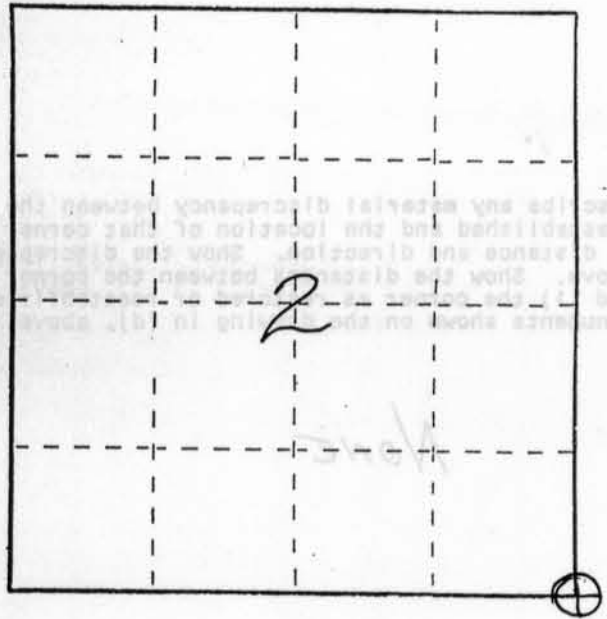
INSTRUCTIONS:

This record shall show the location of the corner and shall include all of the following nine elements (a through i). APR 30 1991

(a) Identify the corner by reference to the U.S. public land survey system.

○ = Corner monument restored.

SOUTHEAST CORNER OF SECTION 2, TOWN 6 NORTH, RANGE 1 WEST, WINGVILLE TOWNSHIP, GRANT COUNTY, WISC.

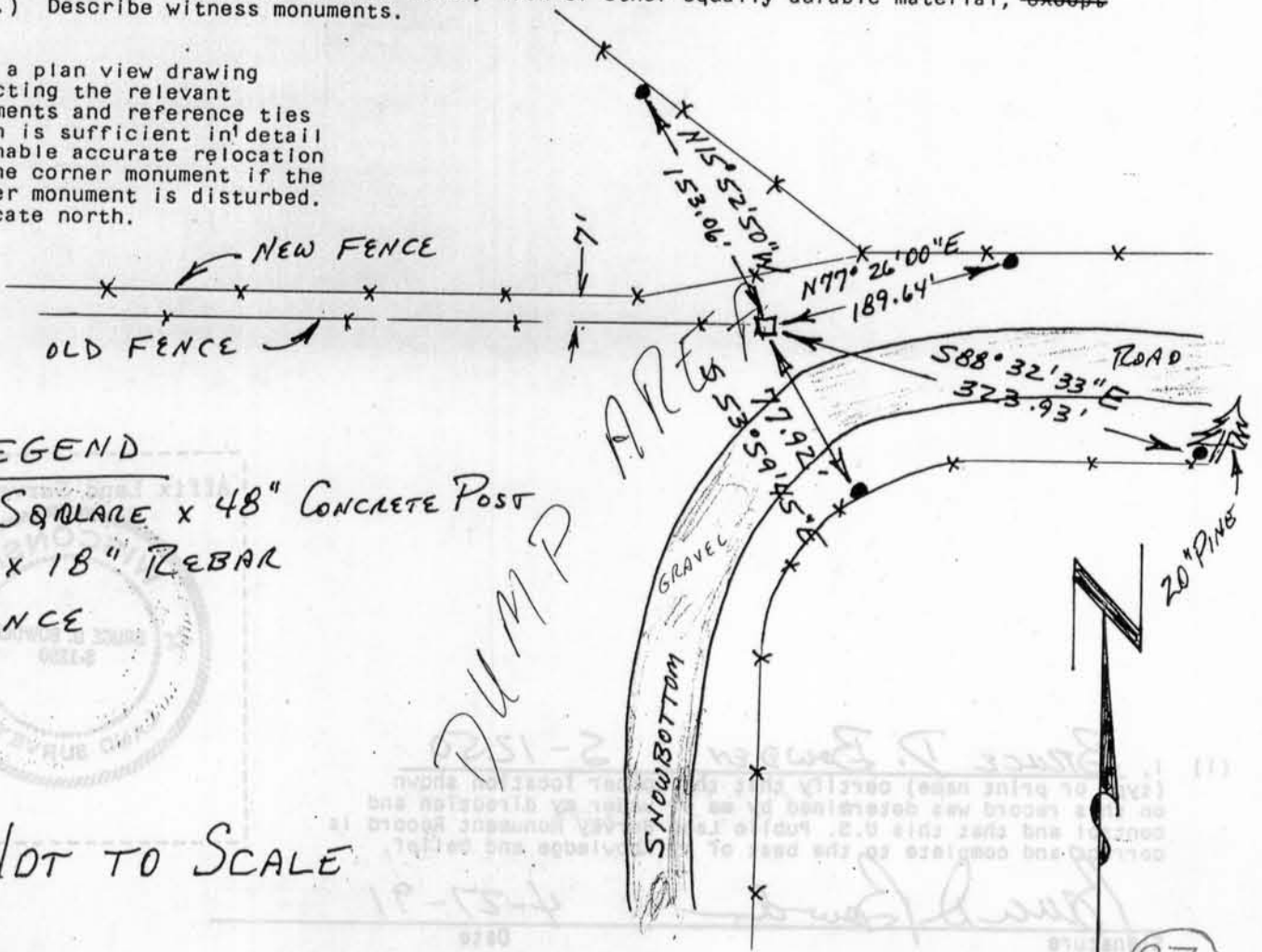


(b) Describe any record evidence, monument evidence, occupational evidence, testimonial evidence or any other material evidence you considered, and whether the monument was found or placed.

MONUMENT SET FROM EXISTING PHYSICAL EVIDENCE OF FENCES AND ROADS, AFTER VERIFICATION BY PROPORTIONATE MEASUREMENTS FROM AN EDM TRAVERSE OF THE AREA.

(c) In the plan view drawing below, provide reference ties to at least 4 witness monuments, or, if the location is within a municipality, to at least 2 witness monuments. (Witness monuments shall be made of concrete, natural stone, iron or other equally durable material, ~~except~~ wood.) Describe witness monuments.

(d) Show a plan view drawing depicting the relevant monuments and reference ties which is sufficient in detail to enable accurate relocation of the corner monument if the corner monument is disturbed. Indicate north.



LEGEND

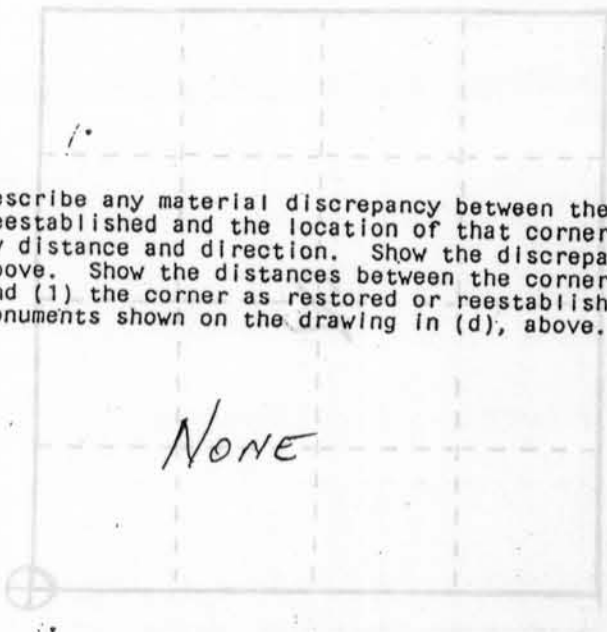
- 4" SQUARE x 48" CONCRETE POST
- #3 x 18" REBAR
- *** FENCE

NOT TO SCALE

U. S. PUBLIC LAND SURVEY MONUMENT RECORD

APR 30 1991
This record shall show the location of the corner and shall include all of the following nine elements (a through i).

(a) Identify the corner by reference to the U.S. Public Land Survey System.
(b) Corner monument restored.



(e) Describe any material discrepancy between the location of the corner as restored or reestablished and the location of that corner as previously restored or reestablished by distance and direction. Show the discrepancy on the plan view drawing under (d), above. Show the distances between the corner as previously restored or reestablished and (1) the corner as restored or reestablished, and (2) to at least 2 of the witness monuments shown on the drawing in (d), above.

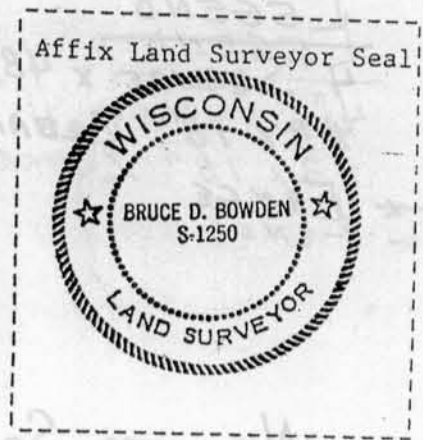
NONE

(f) Was the corner restored through acceptance of (1) an obliterated evidence location, or, (2) a found perpetuated location?

(2) A FOUND PERPETUATED LOCATION

(g&h) Was the corner reestablished through lost corner proportionate methods? If so, show the method, including the directions and distances to other public land survey corners used as evidence or used for proportioning in determining the corner location?

No.



(i) I, Bruce D. Bowden S-1250
(type or print name) certify that the corner location shown on this record was determined by me or under my direction and control and that this U.S. Public Land Survey Monument Record is correct and complete to the best of my knowledge and belief.

Bruce D. Bowden
Signature

4-27-91
Date