

U.S. PUBLIC LAND SURVEY MONUMENT RECORD - GRANT COUNTY, WI

Section 36, Town 5 North Range 6 West, Town of Bloomington West

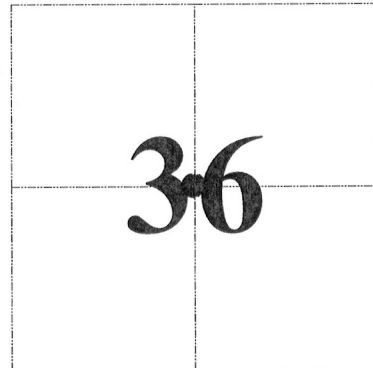
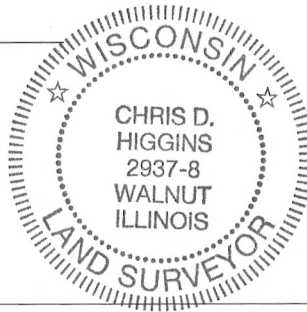
CERTIFICATE:

I, Chris D. Higgins, do hereby certify that the corner location on this record was determined by me and/or under my direct supervision and that this U.S. Public Land Survey Monument Record is correct and complete to the best of my knowledge and belief.

Dated this 31st day of October, 20 12.

Chris D Higgins

Chris D. Higgins, RLS-2937-8



● = CORNER LOCATION

HISTORY OF CORNER ESTABLISHMENT:

No monumentation or recorded data was found for this corner.

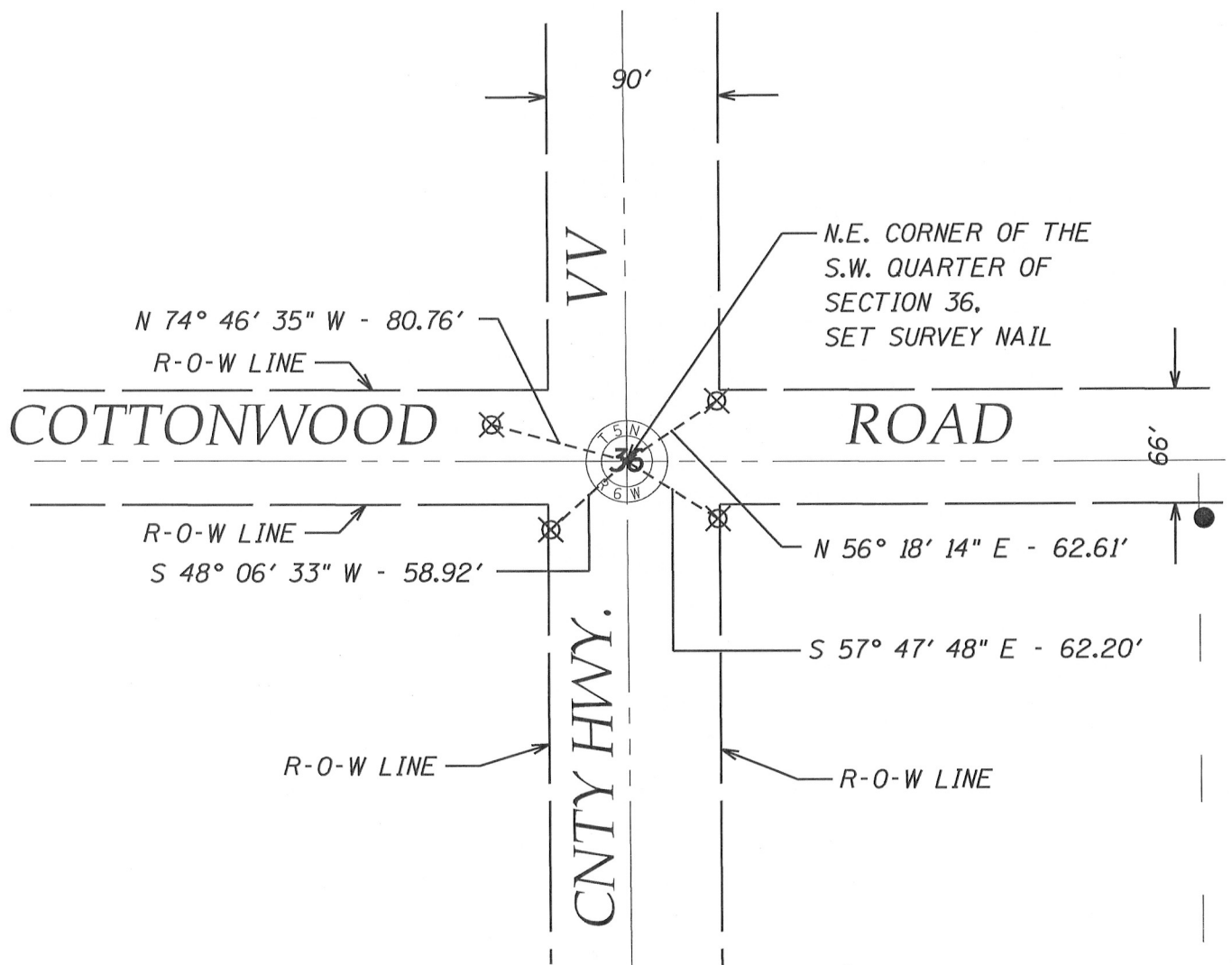
DESCRIPTION OF CORNER EVIDENCE FOUND:

Corner set by intersecting a line between the existing north and south quarter section corners and a line between the existing east and west quarter section corners. The location fits occupation. Location verified by GPS and Total Station measurement.

DESCRIPTION OF CORNER AND WITNESS MONUMENTS, references and accessories used to perpetuate the original or re-established location of this corner. Witnesses to corner location Ben Scheffner and Rey Munoz

SKETCH:

⊗ = 3/4" x 36" Rebar Set



NOV 27 2012
119.5