

GRANT COUNTY CERTIFIED LAND CORNER

CERTIFICATE:

I, LARRY L. AUSTIN, DO HEREBY CERTIFY THAT ON TENTH DAY OF OCTOBER, 1999, I FOUND EVIDENCE OF THE NORTH 1/4 CORNER OF SECTION 01, TOWN 4 NORTH, RANGE 6 WEST, OF THE FOURTH PRINCIPAL MERIDIAN, AND I RE-ESTABLISHED SAID CORNER ACCORDING TO THE WISCONSIN STATUTES AS SHOWN AND DESCRIBED HEREON.

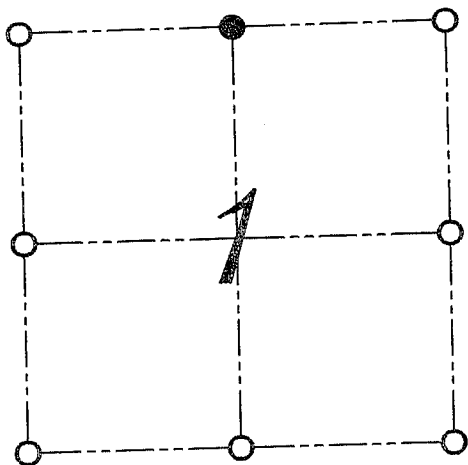
DATED THIS FIFTEENTH DAY OF OCTOBER, 1999

Larry L. Austin
LARRY L. AUSTIN S-1903



SEAL

CORNER NUMBER 02



● = CORNER LOCATION
NORTH 1/4 CORNER OF
SECTION 1, T 4 N R 6 W
TOWN OF BLOOMINGTON

HISTORY OF ORIGINAL CORNER ESTABLISHMENT:

CORNER WAS SET IN 1832 BY SIBLEY. IN 1875 JOEL BARBER FOUND A STONE SET BY JAMES WILSON. THOMAS BUCK SET THE CORNER IN 1998.

DESCRIPTION OF CORNER EVIDENCE FOUND:

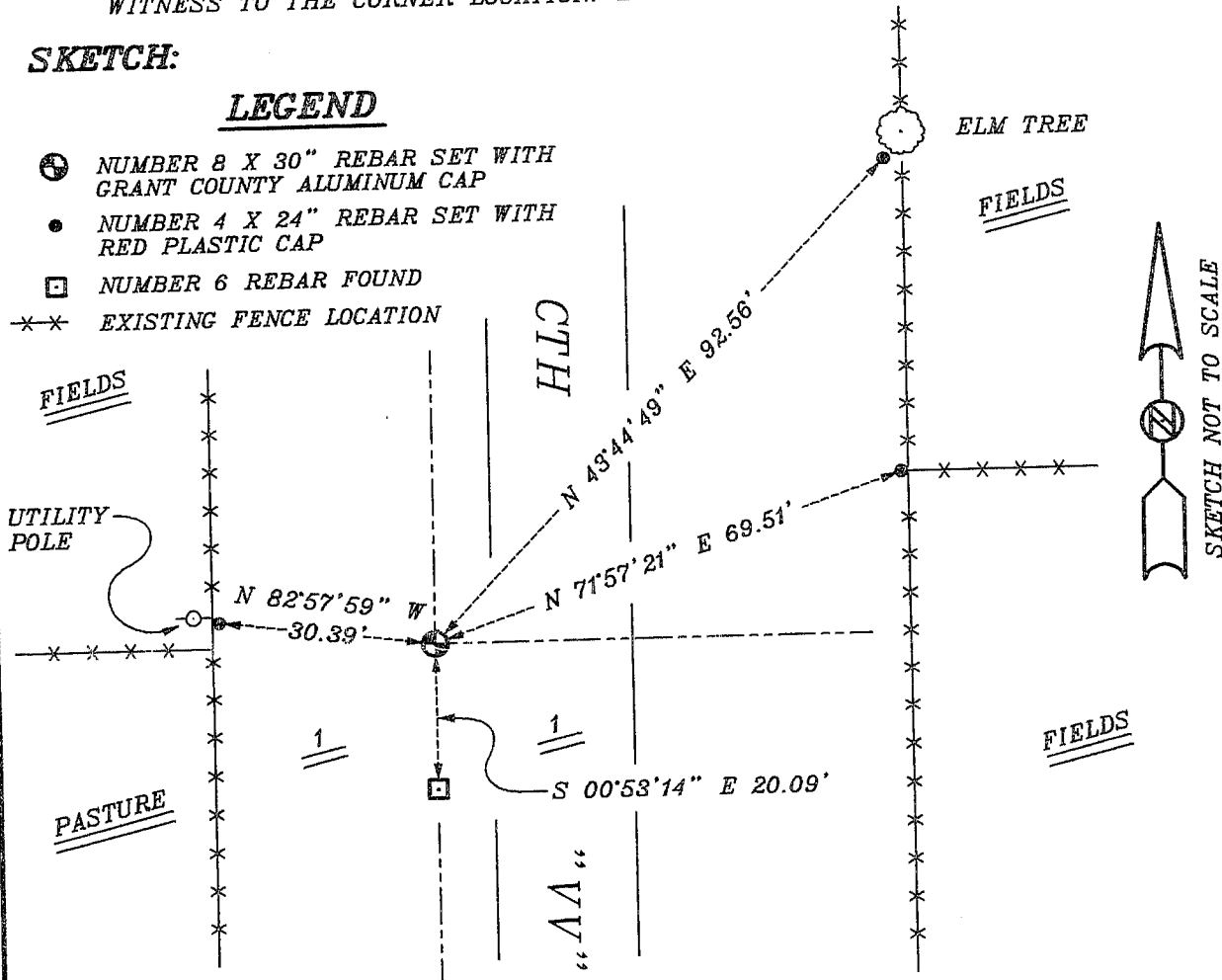
I WAS UNABLE TO FIND THE STONE DO TO A HUGE CUT FOR THE HIGHWAY. I FOUND BUCK'S CORNER AND ALSO FOUND IT TO BE INCORRECT. I FOUND OCCUPATIONAL EVIDENCE ALONG THE NORTH LINE OF THE NE 1/4 OF SECTION 1 AND A FENCE WEST ALONG THE NORTH LINE OF THE NW 1/4 FOR NORTHING. I HELD BUCK'S EASTING AS THE BEST EVIDENCE. VERIFIED THIS LOCATION USING E.D.M. AND G.P.S. METHODS.

DESCRIPTION OF CORNER AND WITNESS MONUMENTS, REFERENCES AND ACCESSORIES USED TO PERPETUATE THE ORIGINAL OR RE-ESTABLISHED LOCATION OF THIS CORNER:
WITNESS TO THE CORNER LOCATION: BOBBY SEDGWICK ; SHELBY BLINDERT

SKETCH:

LEGEND

- ⊙ NUMBER 8 X 30" REBAR SET WITH GRANT COUNTY ALUMINUM CAP
- NUMBER 4 X 24" REBAR SET WITH RED PLASTIC CAP
- NUMBER 6 REBAR FOUND
- *-* EXISTING FENCE LOCATION



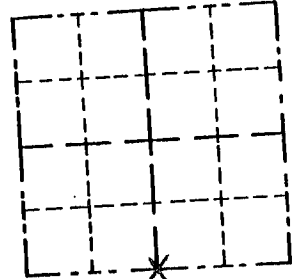
GRANT COUNTY

REC'D FEB 11 1998

Survey Monument Record

CORNER NO. 122
 SECTION 36
 TOWN 5N
 RANGE 6W

TYPE OF MONUMENT 24" x 3/4" Iron Rod
 STATE PLANE COORDINATES: N _____
 E _____
 ELEVATION — M.S.L. DATUM: _____
 THETA ANGLE: _____
 FIELD BOOK: _____
 PAGE _____



LOCATION
(Indicated by "X")

BASIS FOR MONUMENT LOCATION

(Use reverse side if necessary)

Show info such as: History of corner, with reference to Vol. and pg., dates, surveyor; exact description of monument replaced; if location computed, by taped or EDM traverse; landowner, remarks, etc.

SEAL:

SEE TIE SHEET
FOR N 1/4 1-4-6

Monument set from existing physical evidence after verification by proportionate measurements from an EDM traverse of the area and GPS observations.

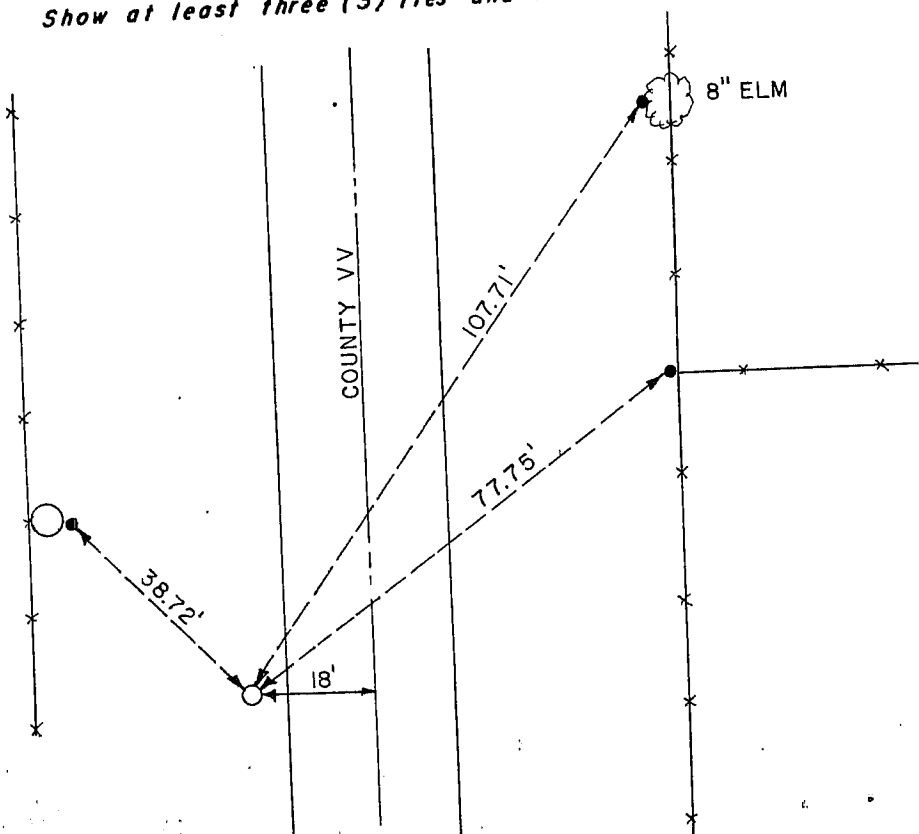
CERTIFIED CORRECT

Thomas Bueh
Registered Land Surveyor

DATE: 2/5/98

TIE SKETCH

Show at least three (3) ties and monument



- = POWER POLE
- = 3/4" x 24" IRON ROD
- = 1/2" x 18" IRON ROD
- *-x = EXISTING FENCE