

U.S. PUBLIC LAND SURVEY MONUMENT RECORD - GRANT COUNTY, WI


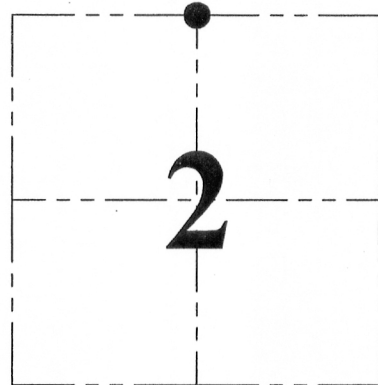
Section 2, Town 4 North Range 6 West, Town of Bloomington

CERTIFICATE:

I, Aaron J. Austin, do hereby certify that the corner location on this record was determined by me and/or under my direct supervision and that this U.S. Public Land Survey Monument Record is correct and complete to the best of my knowledge and belief.

Dated this 21st day of August, 2013.

Aaron J. Austin
 Aaron J. Austin, S-2922

● = CORNER LOCATION

HISTORY OF CORNER ESTABLISHMENT:

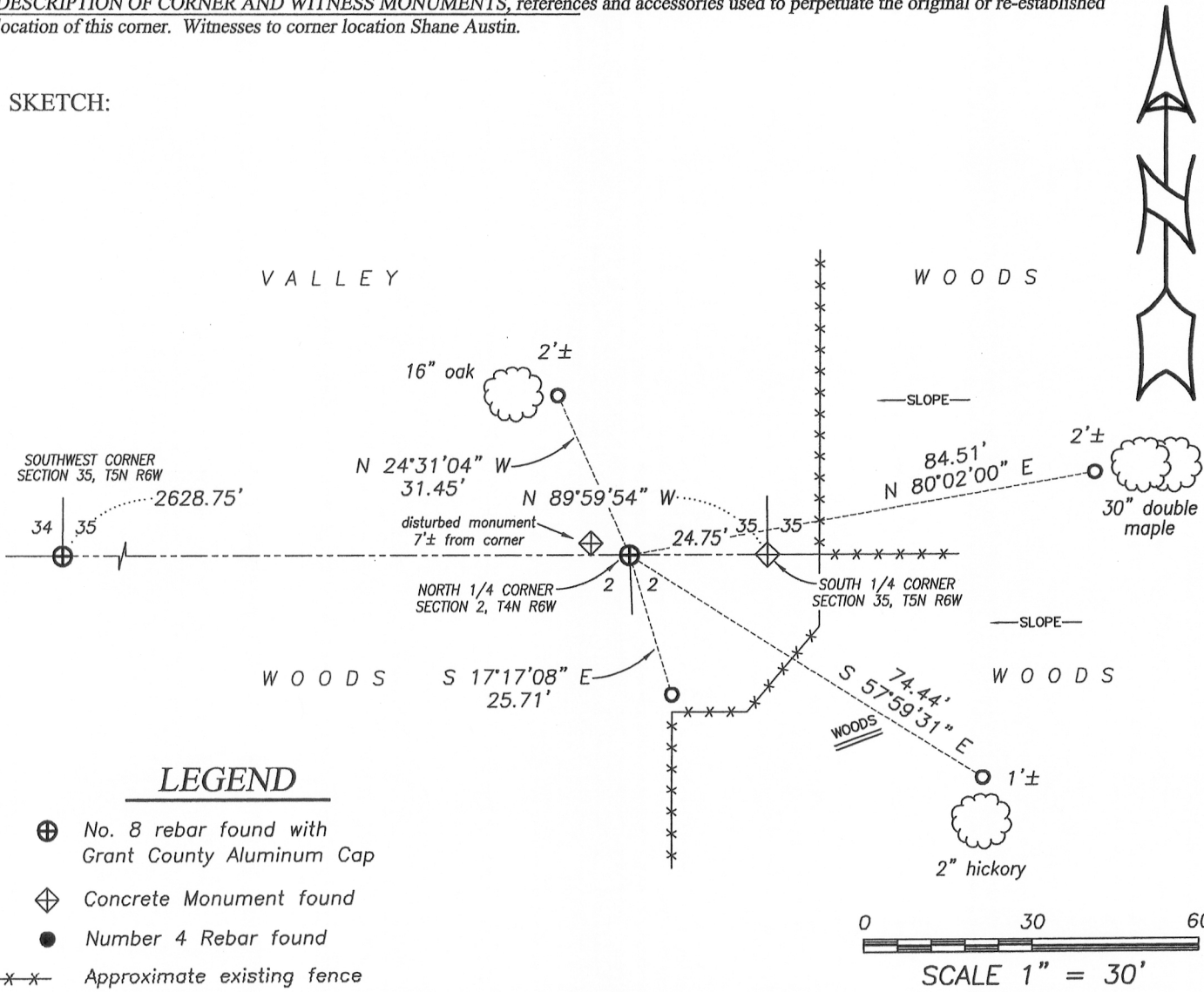
Corner was not set with original survey.
 1855 corner was shown on a survey in Book B, Page 417.
 1854 Corner was tied to on a survey in Book C, Page 105.
 2010 Corner was shown on a survey in Book 27, Page 56.

DESCRIPTION OF CORNER EVIDENCE FOUND:

I found and accepted a No. 8 rebar with Grant County Aluminium Cap set by Larry Austin on a survey filed in Book 27, Page 56. It appears this monument was set on the South line of Section 35, T5N R6W at the recorded half offset from the Northwest corner of Section 2. I verified this location by E.D.M. and G.P.S. methods.

DESCRIPTION OF CORNER AND WITNESS MONUMENTS, references and accessories used to perpetuate the original or re-established location of this corner. Witnesses to corner location Shane Austin.

SKETCH:



4211 HWY 81 E, LANCASTER, WI 53813
 PHONE: 608-723-6363 FAX: 608-723-6702

JOB NO: 13s133
 G:\T5NR6W\34
 H:\TIE\T4NR6W\04

FIELDBOOK: TDSR
 DRAWN BY: AJ AUSTIN
 CREW: SW AUSTIN

U.S. PUBLIC LAND SURVEY MONUMENT RECORD – GRANT COUNTY, WI

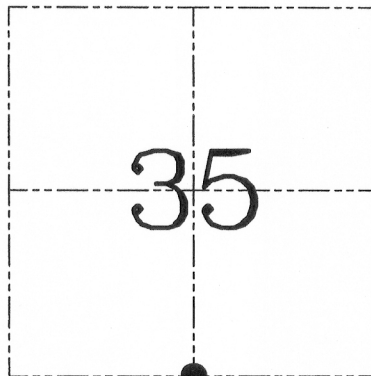
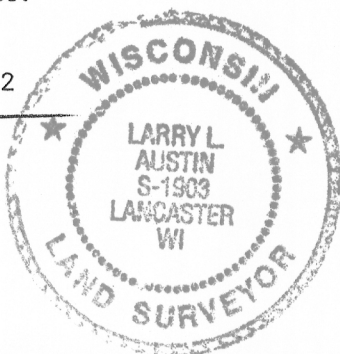
Section 35, Town 5 North, Range 6 West, Town of Bloomington

CERTIFICATE

I, Larry L. Austin, do hereby certify that the corner location on this record was determined by me and/or under my direct supervision and that this U.S. public land survey monument record is correct and complete to the best of my knowledge and belief.

Dated this 22nd day of April, 2002

Larry L. Austin
Larry L. Austin S-1903



● = CORNER LOCATION

HISTORY OF CORNER ESTABLISHMENT

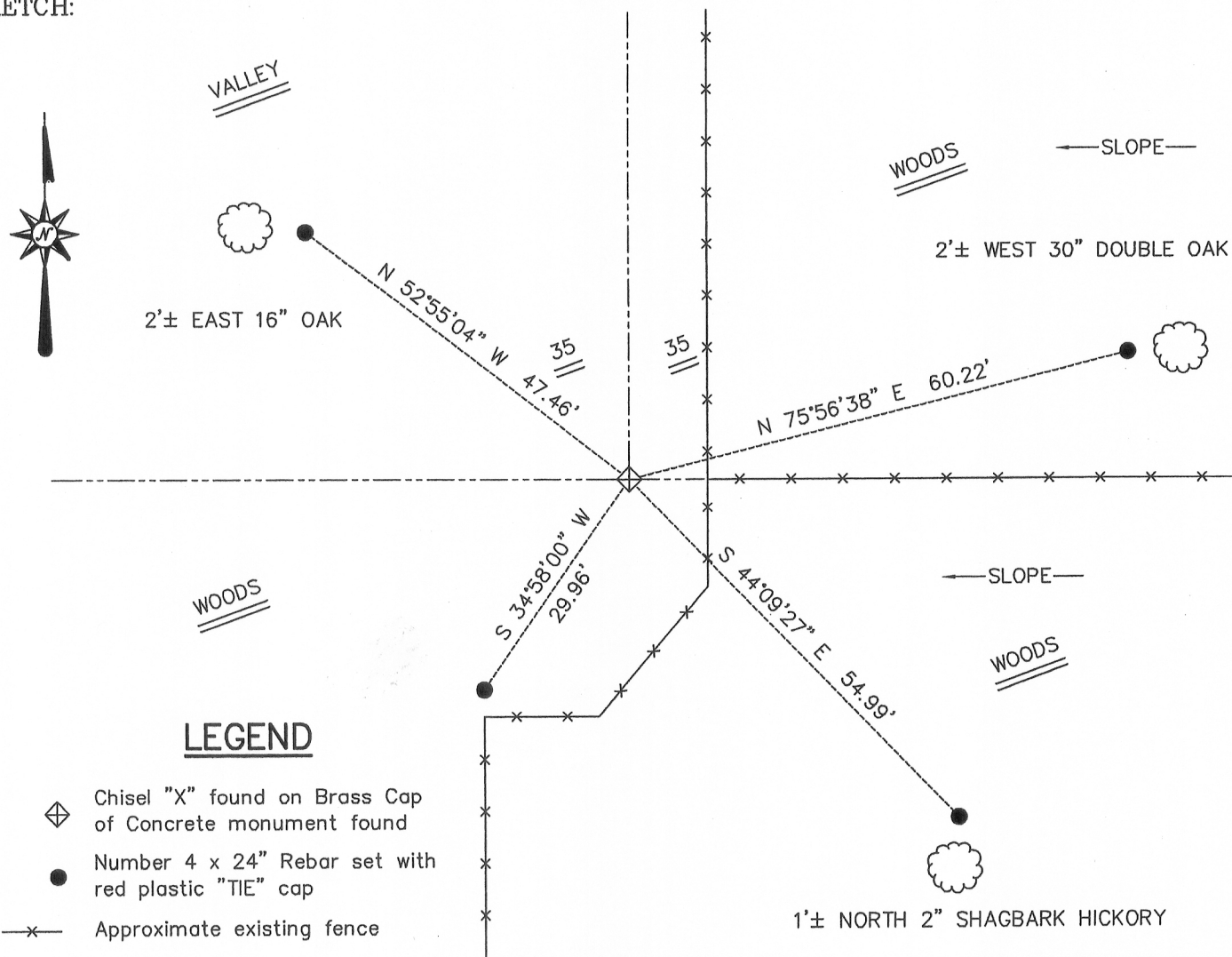
Corner was originally set in 1832 by Lucius Lyon. In 1854 Clark measured to this corner.

DESCRIPTION OF CORNER EVIDENCE FOUND

I found and accepted a concrete monument with a brass cap. I verified it's location with E.D.M. methods.

DESCRIPTION OF CORNER AND WITNESS MONUMENTS, references and accessories used to perpetuate the original or re-established location of this corner. Witnesses to the corner location B. Sedgwick & S. Blindert & B. Digman

SKETCH:



SKETCH NOT TO SCALE

AUSTIN ENGINEERING, LLC

4211 HWY 81 EAST, LANCASTER, WI 53813
PHONE 608-723-6363 FAX 608-723-6702

FIELDBOOK: SDR33, 2207

G:\T5NR6W\34
C:\SWA\TIE\T5NR6W\124
CREW: BS-SB-SA-BD

DRAWN BY: SW AUSTIN
APPROVED: LL AUSTIN

CORNER NUMBER 124

AUG 28 2013