

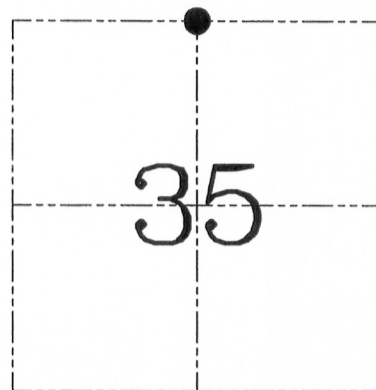
**U.S. PUBLIC LAND SURVEY MONUMENT RECORD – GRANT COUNTY, WI**  
**Section 35, Town 5 North, Range 6 West, Town of Bloomington**

**CERTIFICATE**

I, Larry L. Austin, do hereby certify that the corner location on this record was determined by me and/or under my direct supervision and that this U.S. public land survey monument record is correct and complete to the best of my knowledge and belief.

Dated this 22nd day of April, 2002

*Larry L. Austin*  
 Larry L. Austin S-1903



● = CORNER LOCATION

**HISTORY OF CORNER ESTABLISHMENT**

Corner originally set in 1832 by Clark.  
 No other record found for this corner.

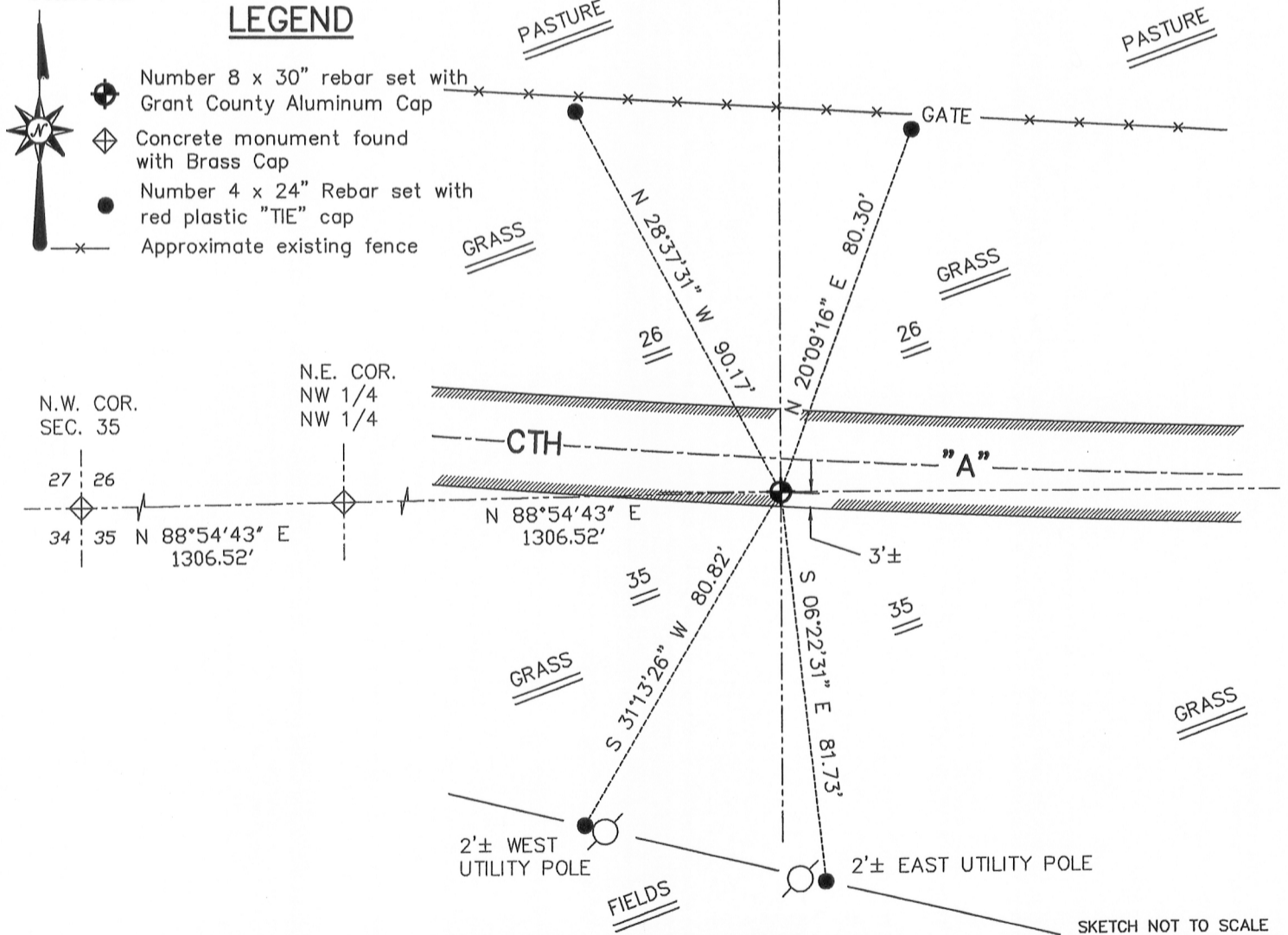
**DESCRIPTION OF CORNER EVIDENCE FOUND**

I reset the corner based upon projecting a line through the Northwest corner of Section 35 and a found monument at the Northeast corner of the NW 1/4 of the NW 1/4 at the measured distance between those monuments. I verified this location by E.D.M. and G.P.S. methods.

**DESCRIPTION OF CORNER AND WITNESS MONUMENTS**, references and accessories used to perpetuate the original or re-established location of this corner. Witnesses to the corner location B. Sedgwick & S. Blindert & B. Digman

**SKETCH:**

**LEGEND**



SKETCH NOT TO SCALE

**AUSTIN ENGINEERING, LLC**  
 4211 HWY 81 EAST, LANCASTER, WI 53813  
 PHONE 608-723-6363 FAX 608-723-6702

FIELDBOOK: SDR33, 2112  
 G: \T5NR6W\34  
 H: \TIE\T5NR6W\104  
 CREW: BS-SB-SA-BD

DRAWN BY: SW AUSTIN  
 APPROVED: LL AUSTIN

**CORNER NUMBER 104**

**AUG 28 2013**