

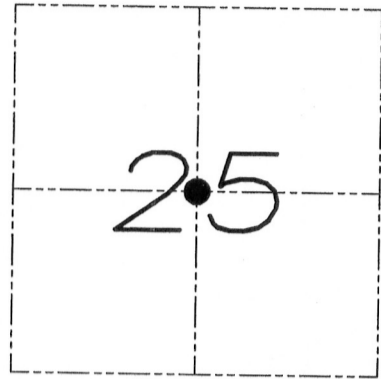
# U.S. PUBLIC LAND SURVEY MONUMENT RECORD

Section 25, Town 5 North Range 6 West, Town of Bloomington, Grant County, Wisconsin

## CERTIFICATE

I, Larry L. Austin, do hereby certify that the corner location on this record was determined by me and/or under my direct supervision and that this U.S. public land survey monument record is correct and complete to the best of my knowledge and belief.

*Larry L. Austin*  
 Larry L. Austin, S-1903



● = CORNER LOCATION

## HISTORY OF CORNER

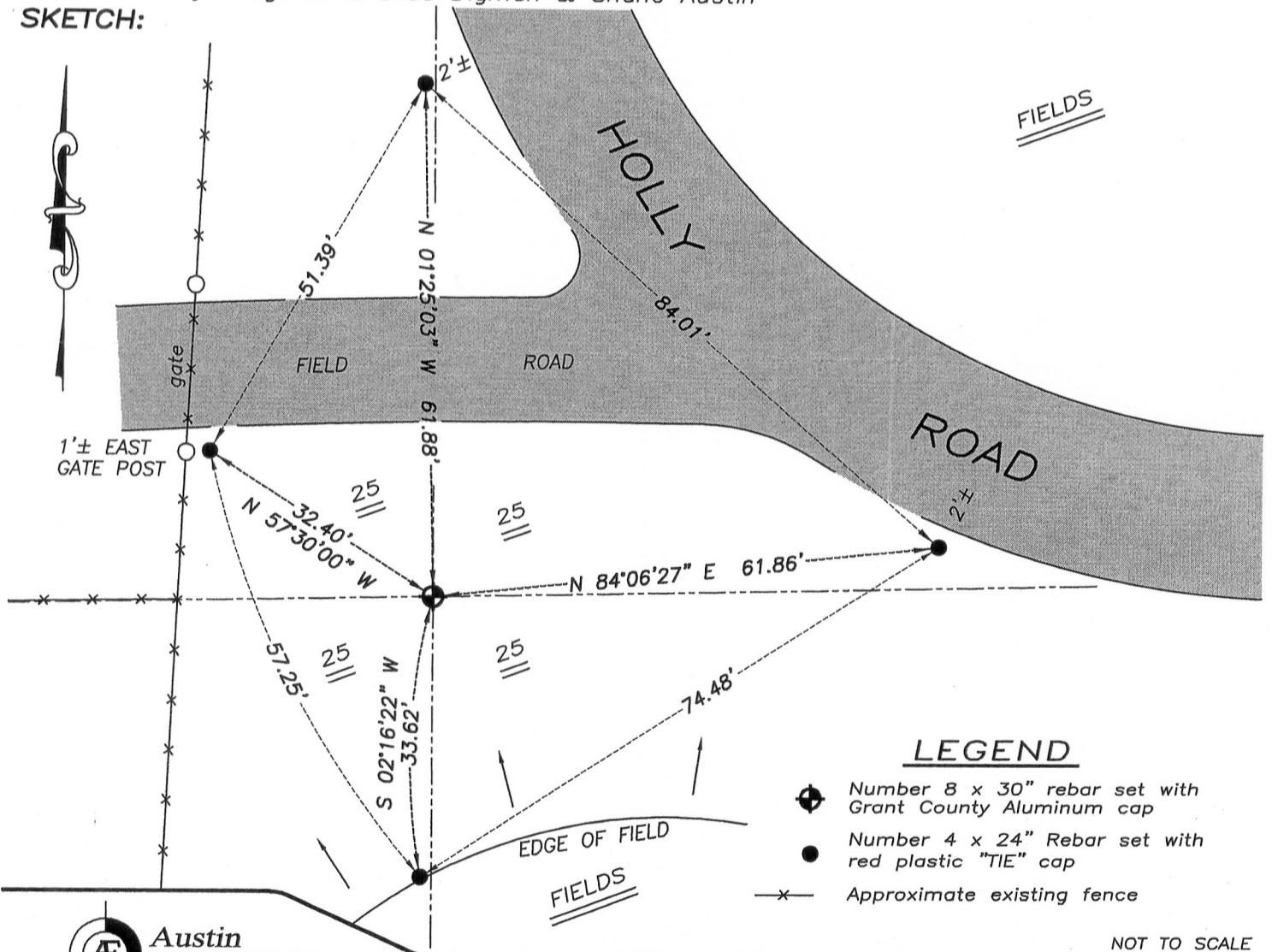
Corner was not set with original survey. The center was established by a survey filed in Book B, Page 380 dated April 7, 1855. No other record of the corner was found.

## CORNER EVIDENCE FOUND

No evidence for this corner was found from the 1855 survey. The corner was reset proportionally between the West 1/4 and East 1/4 corners based upon the dimensions of the 1855 survey.

DESCRIPTION OF CORNER AND WITNESS MONUMENTS, references and accessories used to perpetuate the original or re-established location of this corner. Witnesses to monument location Bobby Sedgwick & Brad Digman & Shane Austin

## SKETCH:



**Austin Engineering LLC**  
 austinengineeringllc.com

4211 HWY 81 E, LANCASTER, WI 53813  
 PHONE: 608-723-6363 FAX: 608-723-6702

JOB NUMBER 09S192-RICHTER  
 FIELDBOOK: TDSR, 2910  
 G:\T4NR6W\01  
 H:\TIE\T5NR6W\99A

DRAWN BY: SW AUSTIN  
 APPROVED: LL AUSTIN

99A

APR 19 2012