

# GRANT COUNTY

## Survey Monument Record

TYPE OF MONUMENT RESET 3/4" X 24" IRON BAR

STATE PLANE COORDINATES: N \_\_\_\_\_  
E \_\_\_\_\_

ELEVATION — M.S.L. DATUM: \_\_\_\_\_

THETA ANGLE: \_\_\_\_\_

FIELD BOOK: 95-13

PAGE (17)

CORNER NO. 113  
SECTION 30  
TOWN 5N  
RANGE 5W



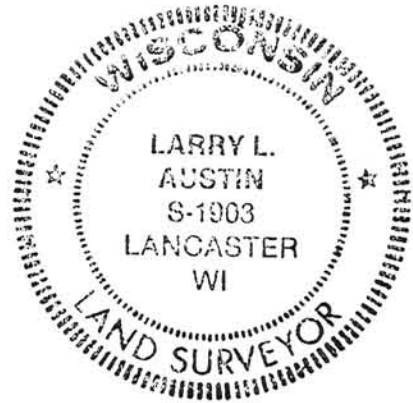
LOCATION  
(Indicated by "X")

### BASIS FOR MONUMENT LOCATION

(Use reverse side if necessary)

FOUND A BENT 3/4" IRON BAR SET BY RICHARD MARX IN 1989. CORNER WAS RESET USING FOUND TIES AND ACCEPTED ITS LOCATION AFTER EDM TRAVERSE OF THE AREA.

SEAL:



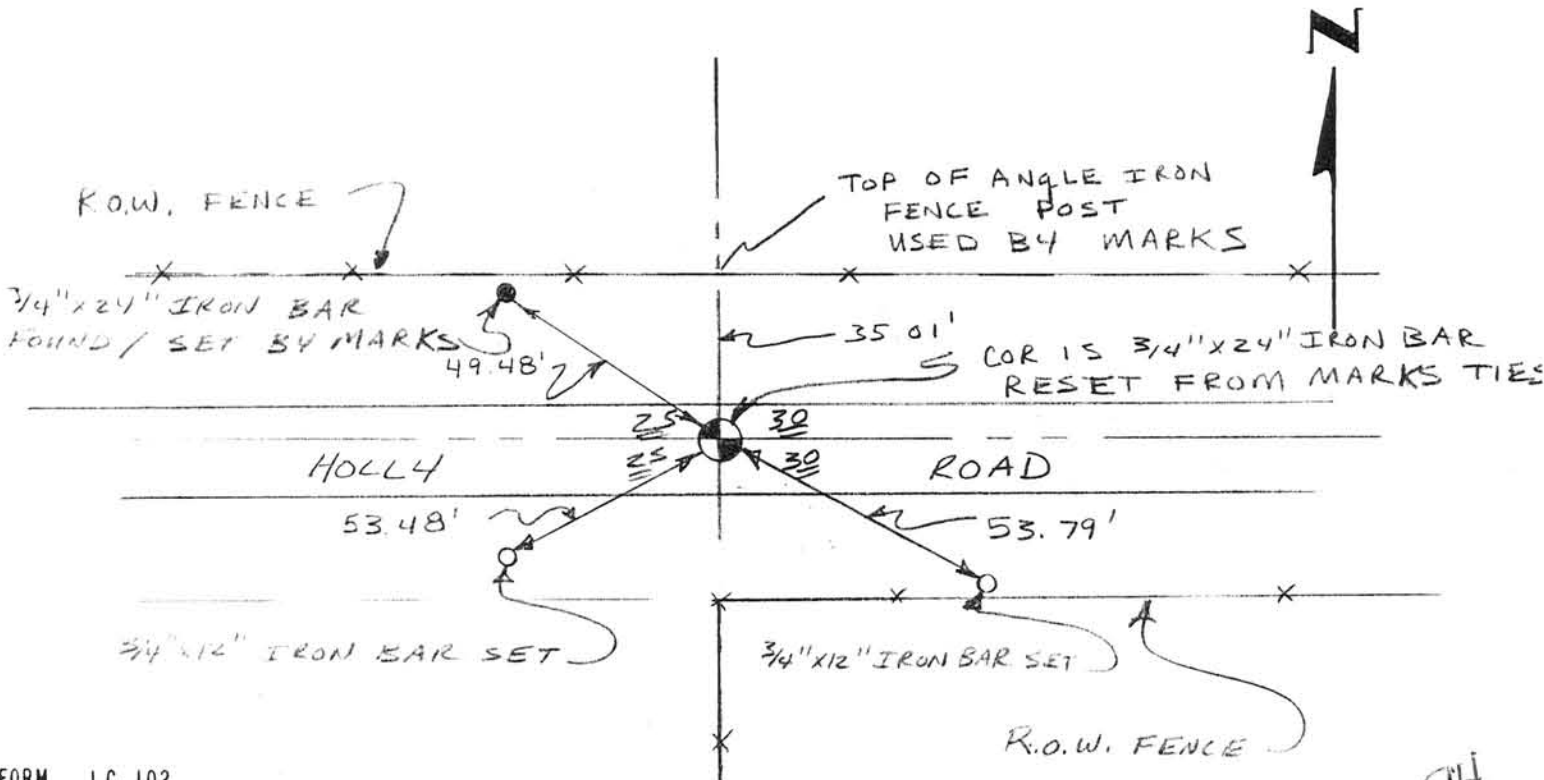
CERTIFIED CORRECT

*Larry L. Austin*  
Registered Land Surveyor

DATE: 11/15/95

### TIE SKETCH

Show at least three (3) ties and monument

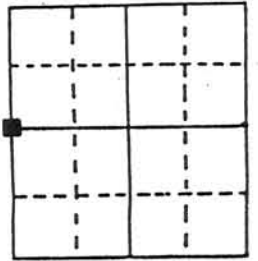


# U.S. PUBLIC LAND SURVEY MONUMENT RECORD

Note: This form is intended and designed to fulfill all requirements of Wisconsin Administrative Code, Chapter A-E 5.02, U.S. Public Land Survey Monument Record (3) (a) (b) (c) (d) (e) (f) (g) (h) (i). An additional sheet may be added if necessary to conform with said requirements.

(a) Corner location: Township 5 North  
Range 5 East/West  
Town/City/Village Bloomington  
County Grant

GRANT COUNTY CLERK  
**RECEIVED**



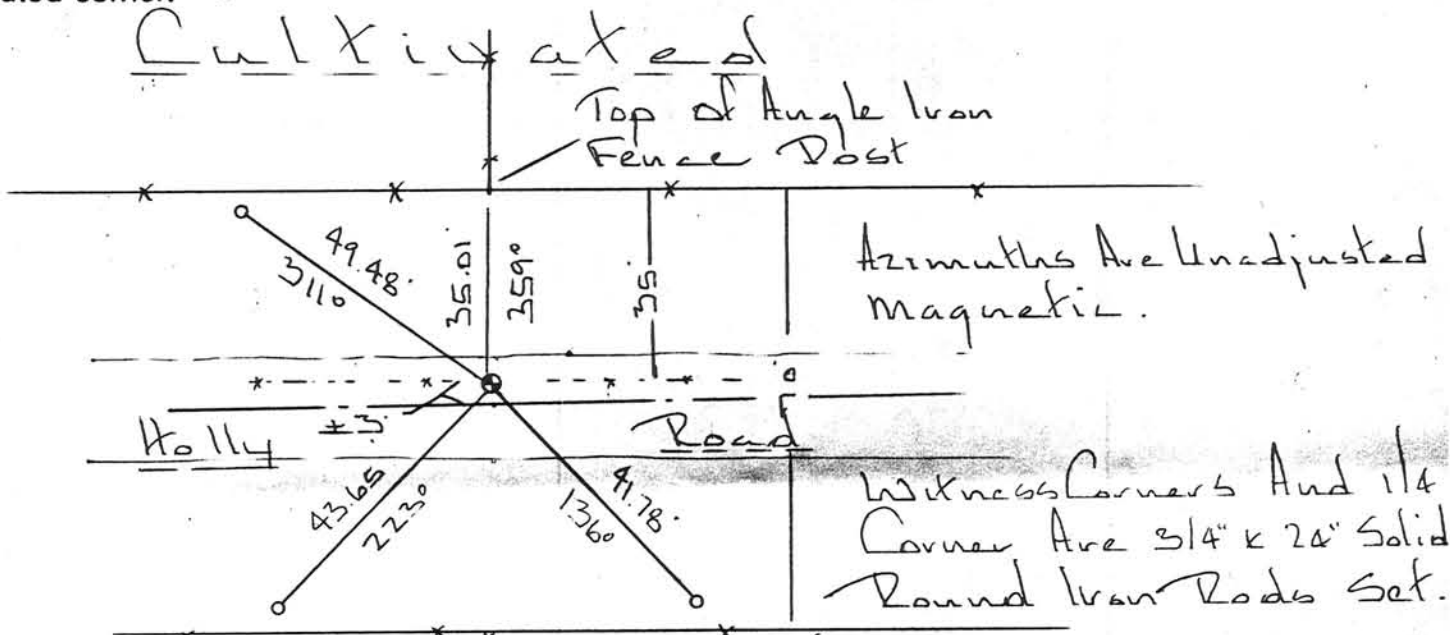
JUN 14 1989

Section 30

(b) (f) (g) (h) Description of monument found at this corner and if it was accepted, state all evidence (material, testimonial, occupational, plats, records, other monuments) used as a basis for accepting. If not accepted or if nothing was found, state evidence used as basis for establishing location. If reestablished through lost corner proportionate methods, indicate all monuments, distances and directions used to establish.

Original Survey Notes were the only records I found concerning this corner. I set this corner in line with a fence north and south and in the center line of Holly Road. I found old strands of fence east and west at this location.

(c) (d) (e) Plan view of corner with ties to at least 4 witness monuments. If in disagreement with previously established corner, show the distances between the two corners and also indicate the ties to the disputed corner.



(i) I, Richard Marks  
(type or print name) certify that the corner location on this record was determined by me or under my direction and control and that this U.S. Public Land Survey Monument Record is correct and complete to the best of my knowledge and belief.

Signature [Handwritten Signature] Date 6/2/89



Affix seal here

P.94A