

# U.S. PUBLIC LAND SURVEY MONUMENT RECORD - GRANT COUNTY, WI

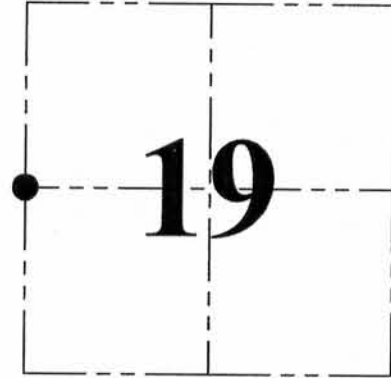
Section 19, Town 5 North Range 5 West, Town of Bloomington

**CERTIFICATE:**

I, Aaron J. Austin, do hereby certify that the corner location on this record was determined by me and/or under my direct supervision and that this U.S. Public Land Survey Monument Record is correct and complete to the best of my knowledge and belief.

Dated this 1st day of August, 2011.

*Aaron J. Austin*  
 Aaron J. Austin, S-2922



● = CORNER LOCATION

HISTORY OF CORNER ESTABLISHMENT:

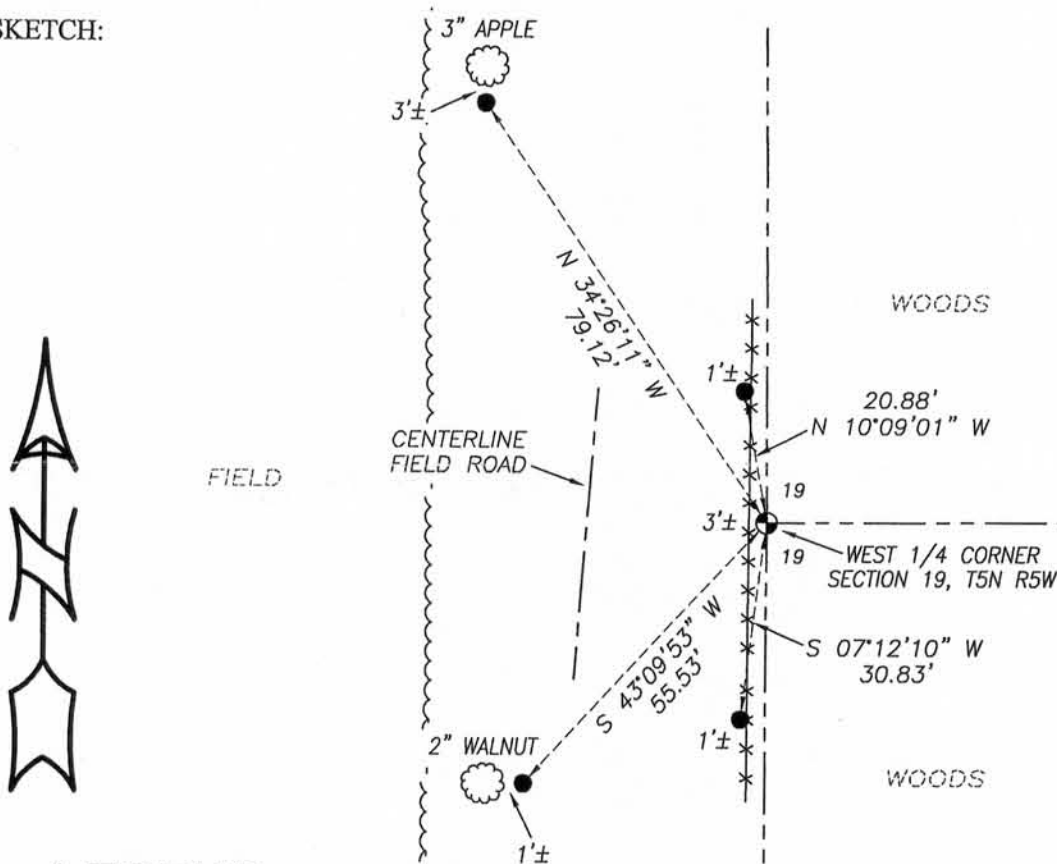
Corner was originally set by Lucius Lyon in 1832.  
 No other record was found of this corner.

DESCRIPTION OF CORNER EVIDENCE FOUND:

I was unable to locate any evidence of the original corner. I reset the corner proportionally between the occupied East line of Section 19. Location was verified by E.D.M. and G.P.S. methods.

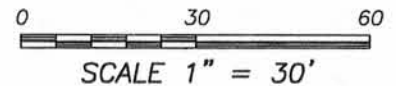
DESCRIPTION OF CORNER AND WITNESS MONUMENTS, references and accessories used to perpetuate the original or re-established location of this corner. Witnesses to corner location Bobby Sedgwick & Shelby Blindert

SKETCH:



**LEGEND**

- No. 8 x 30" rebar set with LLC Grant County Aluminum Cap
- Number 4 x 24" Rebar set with red plastic "TIE" cap



**Austin Engineering LLC**  
 austinengineeringllc.com

4211 HWY 81 E, LANCASTER, WI 53813  
 PHONE: 608-723-6363 FAX: 608-723-6702

JOB NO: 11s156  
 G:\T5NR5W\29  
 H:\TIE\T5NR5W\74

FIELDBOOK: TDSR  
 DRAWN BY: AJ AUSTIN  
 CREW: BS-SB