

**U.S. PUBLIC LAND SURVEY MONUMENT RECORD - GRANT COUNTY, WI**

Section 25, Town 5 North Range 6 West, Town of Bloomington

**CERTIFICATE:**

I, Aaron J. Austin, Professional Wisconsin Land Surveyor, do hereby certify that the corner location on this record was determined by me and/or under my direct supervision and that this U.S. Public Land Survey Monument Record is correct and complete to the best of my knowledge and belief.

Dated this 12th day of March, 2015.

*Aaron J. Austin*  
 Aaron J. Austin, S-2922  
 AUSTIN  
 S-2922  
 LANCASTER  
 WI  
 LAND SURVEYOR



● = CORNER LOCATION

HISTORY OF CORNER ESTABLISHMENT:

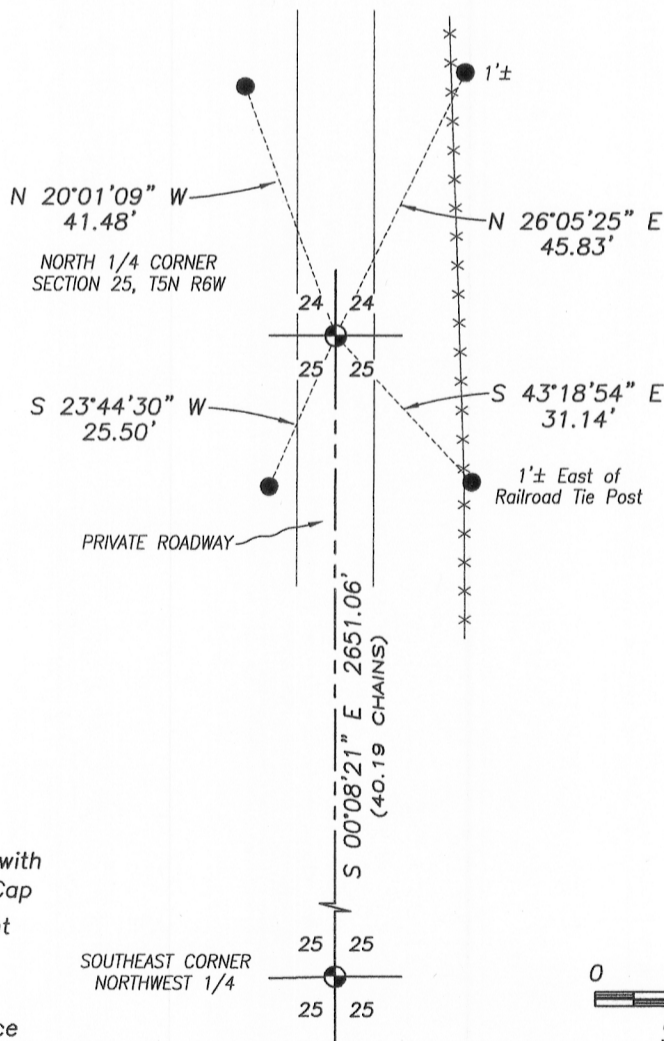
1832-Robert Clark set original corner.  
 1852-Everett tied to the corner on a Survey in Book B, Page 299.  
 1855-Overton tied to the corner on a survey in Book B, Page 380.  
 No other record was found for this corner.

DESCRIPTION OF CORNER EVIDENCE FOUND:

I reset the corner in the centerline of a private drive (which used to be a thru road per historical plat books) and at the recorded distance from the Center of Section based upon Survey in Book B, Page 380. I verified this location with G.P.S. methods.

DESCRIPTION OF CORNER AND WITNESS MONUMENTS, references and accessories used to perpetuate the original or re-established location of this corner. Witnesses to corner location Shane Austin.

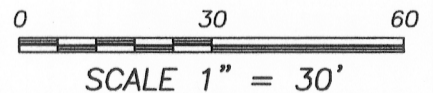
SKETCH:



Bearings referenced to the Grant County Coordinate System (2011 adjustment) which was determined by G.P.S. observation.

**LEGEND**

- No. 1" x 30" rebar set with Grant County Aluminum Cap
- ⊕ 1" rebar found with Grant County Aluminum Cap
- 3/4" x 18" Rebar set
- x-x- Approximate existing fence



**Austin Engineering LLC**  
 austinengineeringllc.com  
 4211 HWY 81 E, LANCASTER, WI 53813  
 PHONE: 608-723-6363 FAX: 608-723-6702

JOB NO: 15s022  
 H:\CRD\15s022-FRENCH  
 H:\TIE\T5NR6W\82

FIELDBOOK: TDSR  
 DRAWN BY: AJ AUSTIN  
 CREW: SW AUSTIN