

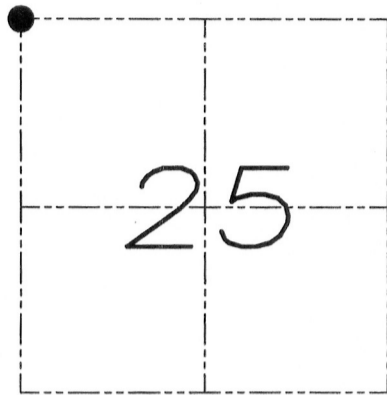
U.S. PUBLIC LAND SURVEY MONUMENT RECORD

Section 25, Town 5 North Range 6 West, Town of Bloomington, Grant County, Wisconsin

CERTIFICATE

I, Larry L. Austin, do hereby certify that the corner location on this record was determined by me and/or under my direct supervision and that this U.S. public land survey monument record is correct and complete to the best of my knowledge and belief.

Larry L. Austin
 Larry L. Austin, S-1903



● = CORNER LOCATION

HISTORY OF CORNER

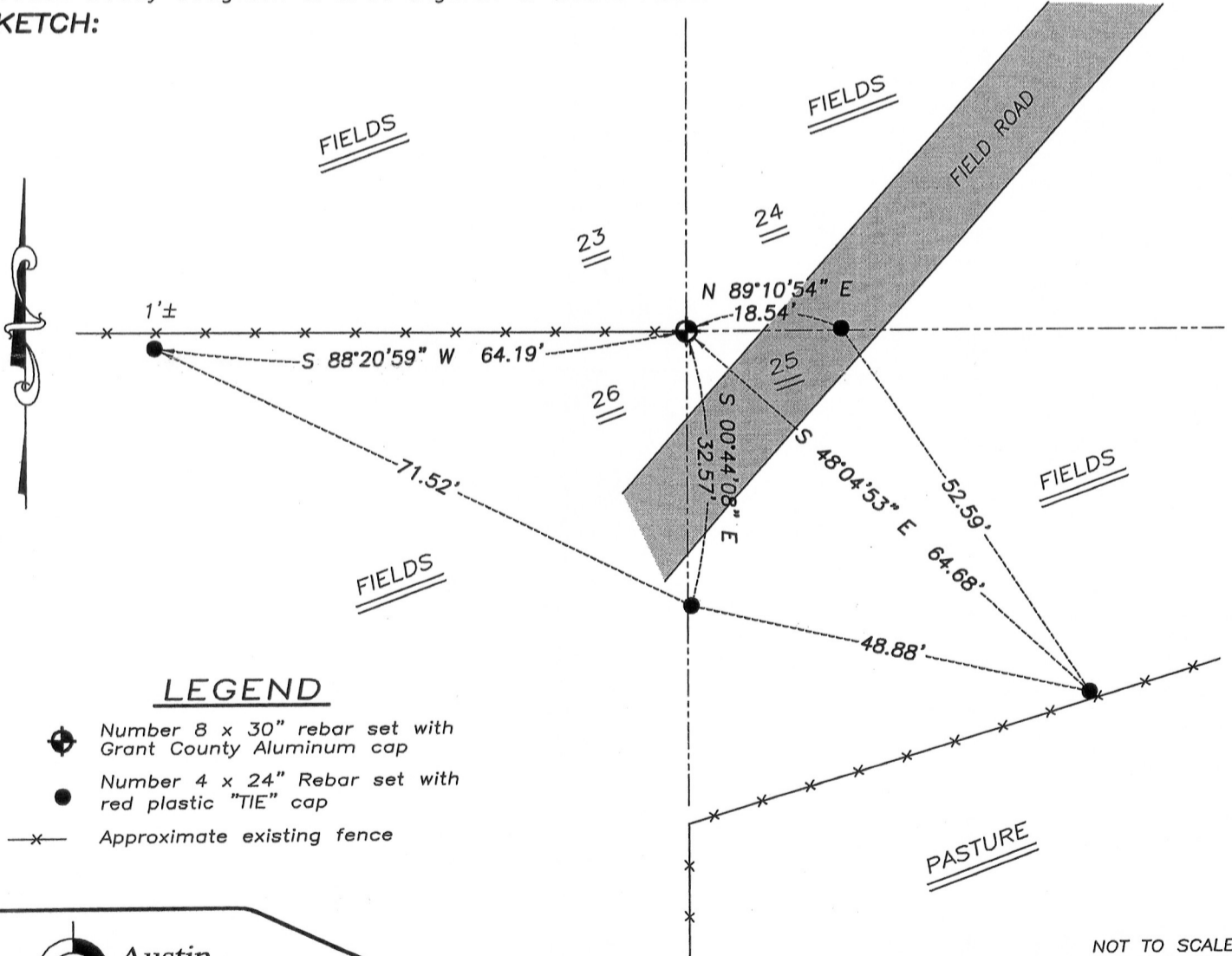
Corner was originally set in 1832 by Clark. In 1852 Everett tied to this corner in a survey filed in Book "B", Page 299. No other record of the corner was found.

CORNER EVIDENCE FOUND

No evidence of the corner was found. I reset the corner based upon occupational evidence of a projection of the fence to the South and a fence West. I verified this location with E.D.M. and G.P.S. methods.

DESCRIPTION OF CORNER AND WITNESS MONUMENTS, references and accessories used to perpetuate the original or re-established location of this corner. Witnesses to monument location Bobby Sedgwick & Brad Digman & Shane Austin

SKETCH:



LEGEND

- ⊕ Number 8 x 30" rebar set with Grant County Aluminum cap
- Number 4 x 24" Rebar set with red plastic "TIE" cap
- x- Approximate existing fence

NOT TO SCALE



Austin Engineering LLC
 austinengineeringllc.com

4211 HWY 81 E, LANCASTER, WI 53813
 PHONE: 608-723-6363 FAX: 608-723-6702

JOB NUMBER 09S192-RICHTER
 FIELDBOOK: TDSR, 2910
 G:\T4NR6W\01
 H:\TIE\T5NR6W\83

DRAWN BY: SW AUSTIN
 APPROVED: LL AUSTIN

83

APR 19 2012