

# GRANT COUNTY CERTIFIED LAND CORNER

CORNER NO. 65

**CERTIFICATE:**

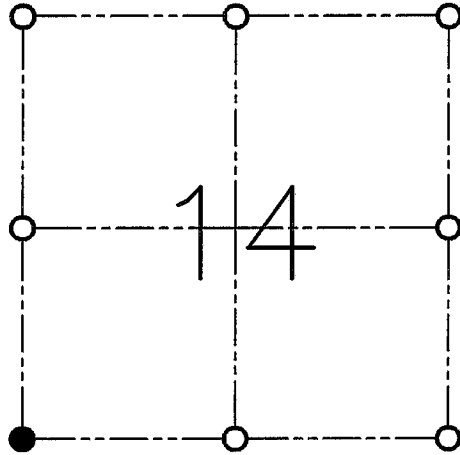
I, LARRY L. AUSTIN, DO HEREBY CERTIFY THAT ON SIXTEENTH DAY OF NOVEMBER, 1998, I FOUND NO EVIDENCE OF THE SOUTHWEST CORNER OF SECTION 14, TOWN 5 NORTH, RANGE 6 WEST, OF THE FOURTH PRINCIPAL MERIDIAN, AND I RE-ESTABLISHED SAID CORNER ACCORDING TO THE WISCONSIN STATUTES AS SHOWN AND DESCRIBED HEREON.

DATED THIS TWENTY-SECOND DAY OF JANUARY, 1999

*Larry L. Austin*  
LARRY L. AUSTIN S-1903



SEAL



● = CORNER LOCATION

**SOUTHWEST CORNER OF SECTION 14  
T 5 N R 6 W  
TOWN OF WYALUSING**

**HISTORY OF ORIGINAL CORNER ESTABLISHMENT:**

CORNER SET IN 1832 BY ROBERT CLARK.

**DESCRIPTION OF CORNER EVIDENCE FOUND:**

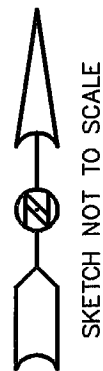
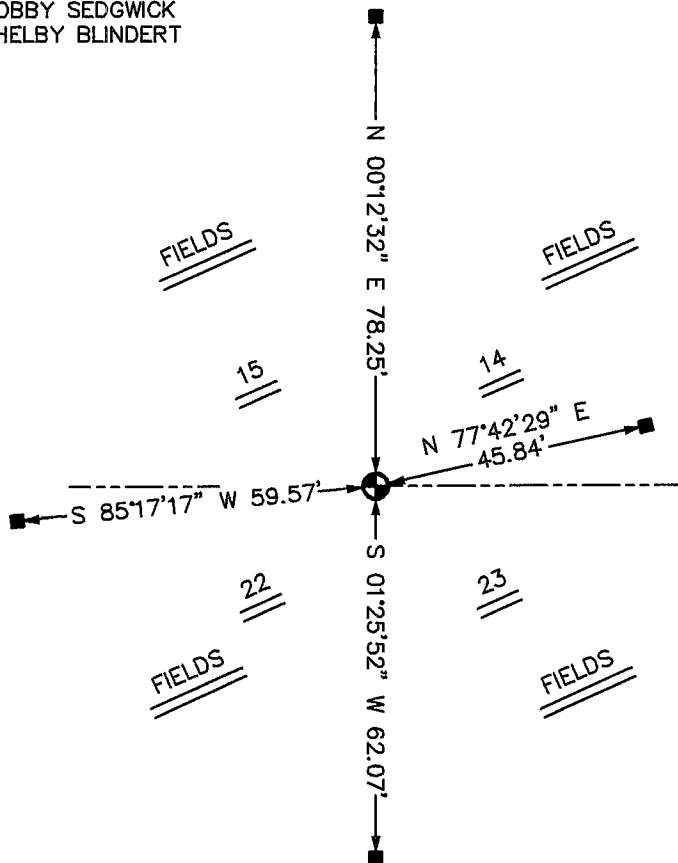
I FOUND NO EVIDENCE OF THE CORNER. I SET THE CORNER BY DOUBLING THE OCCUPIED 40 FROM THE NORTH DOWN. VERIFIED THIS LOCATION USING E.D.M. AND G.P.S. METHODS.

**DESCRIPTION OF CORNER AND WITNESS MONUMENTS, REFERENCES AND ACCESSORIES USED TO PERPETUATE THE ORIGINAL OR RE-ESTABLISHED LOCATION OF THIS CORNER:**

**WITNESS TO THE CORNER LOCATION:**

BOBBY SEDGWICK  
SHELBY BLINDERT

**SKETCH:**



NOTE: ALL TIES AND CORNER ARE BURIED 16 INCHES.

**LEGEND**

- NO. 8 X 30" REBAR SET WITH GRANT COUNTY ALUMINUM CAP
- NO. 4 X 16" REBAR SET