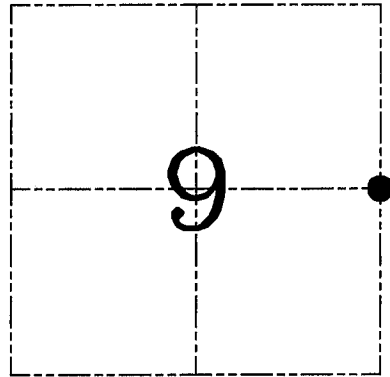
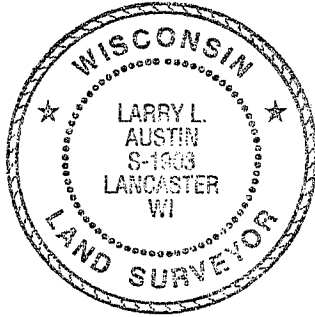


**U.S. PUBLIC LAND SURVEY MONUMENT RECORD – GRANT COUNTY, WI**

**Section 9, Town 5 North Range 6 West, Town of Wyalusing**

CERTIFICATE

I, Larry L. Austin, do hereby certify that the corner location on this record was determined by me and/or under my direct supervision and that this U.S. public land survey monument record is correct and complete to the best of my knowledge and belief.



● = CORNER LOCATION

*Larry L. Austin* 2.28.07  
 Larry L. Austin, S-1903 date

HISTORY OF CORNER ESTABLISHMENT

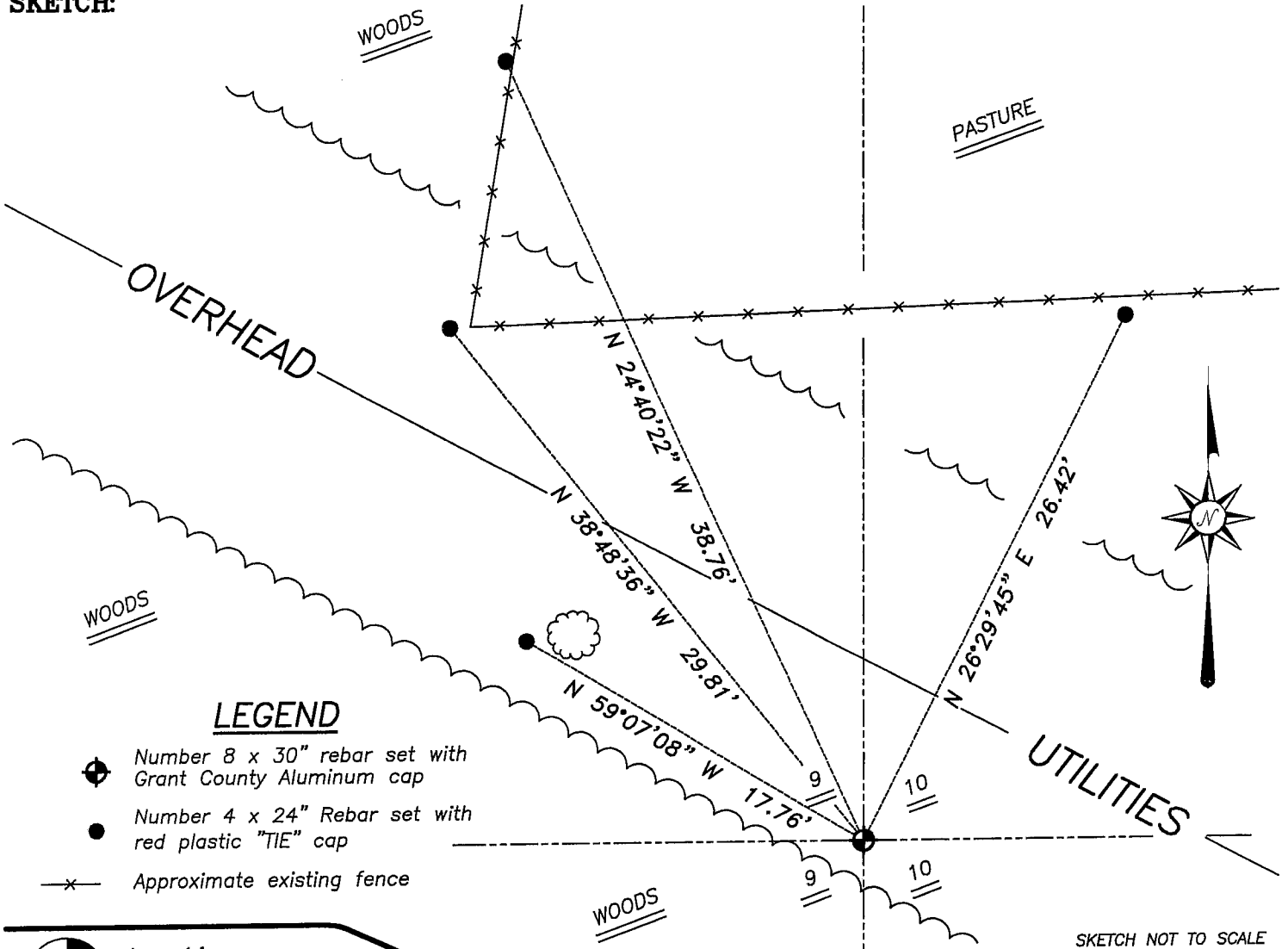
Corner was originally set in 1832 by Robert Clark.  
 No other record of the corner was found.

DESCRIPTION OF CORNER EVIDENCE FOUND

I reset the corner proportionately and on-line between the Northeast corner and the occupied Southeast corner of Section 9. Verified this location using EDM & GPS methods.

DESCRIPTION OF CORNER AND WITNESS MONUMENTS, references and accessories used to perpetuate the original or re-established location of this corner. Witnesses to corner location Bobby Sedgwick & Brad Digman & Shane Austin

**SKETCH:**



**Austin Engineering LLC**

4211 HWY 81 E, LANCASTER, WI 53813  
 PHONE 608-723-6363 FAX 608-723-6702

JOB NUMBER 06S131  
 FIELDBOOK: TDSR, 2602A  
 G:\T6NR6W\33A  
 H:\TIE\T5NR6W\37

DRAWN BY: SW AUSTIN  
 APPROVED: LL AUSTIN