

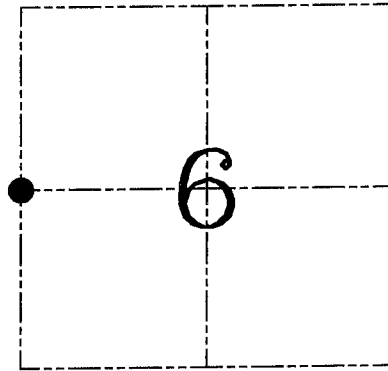
**U.S. PUBLIC LAND SURVEY MONUMENT RECORD – GRANT COUNTY, WI**  
**Section 6, Town 5 North Range 5 West, Town of Patch Grove**

CERTIFICATE

I, Larry L. Austin, do hereby certify that the corner location on this record was determined by me and/or under my direct supervision and that this U.S. public land survey monument record is correct and complete to the best of my knowledge and belief.

Dated this 23<sup>rd</sup> day of June, 2005

*Larry L. Austin*  
 Larry L. Austin S-991903  
 LANCASTER WI  
 LAND SURVEYOR



● = CORNER LOCATION

HISTORY OF CORNER ESTABLISHMENT

Corner was originally set in 1899 by Sampson.  
 No other record of the corner was found.

DESCRIPTION OF CORNER EVIDENCE FOUND

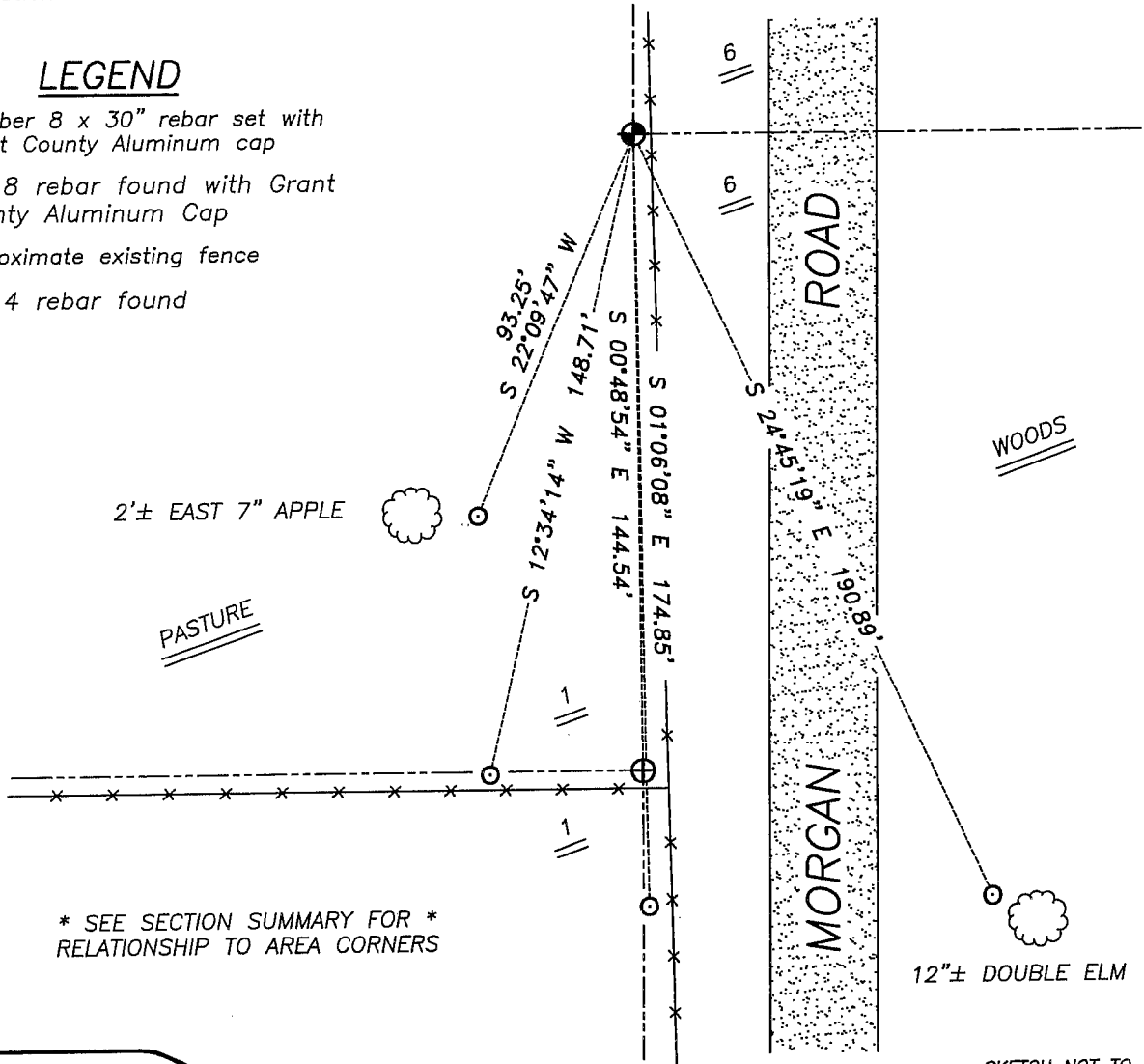
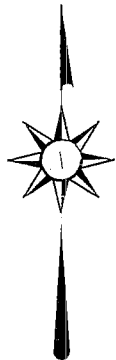
I reset the corner at the recorded offset and on-line between the Northeast corner and East 1/4 corner of Section 1, T5N R6W. Verified this location using EDM & GPS methods.

DESCRIPTION OF CORNER AND WITNESS MONUMENTS, references and accessories used to perpetuate the original or re-established location of this corner. Witnesses to corner location Bobby Sedgwick & Brad Digman & Shane Austin

**SKETCH:**

LEGEND

- ⊕ Number 8 x 30" rebar set with Grant County Aluminum cap
- ⊕ No. 8 rebar found with Grant County Aluminum Cap
- x— Approximate existing fence
- ⊙ No. 4 rebar found



SKETCH NOT TO SCALE



**Austin**  
**Engineering LLC**

4211 HWY 81 E, LANCASTER, WI 53813  
 PHONE 608-723-6363 FAX 608-723-6702

JOB NUMBER 05S168  
 FIELDBOOK: TDSR, 2516  
 G:\T5NR6W\01  
 H:\TIE\T5NR5W\14

DRAWN BY: SW AUSTIN  
 APPROVED: LL AUSTIN

# GRANT COUNTY CERTIFIED LAND CORNER

CORNER NUMBER 20

**CERTIFICATE:**

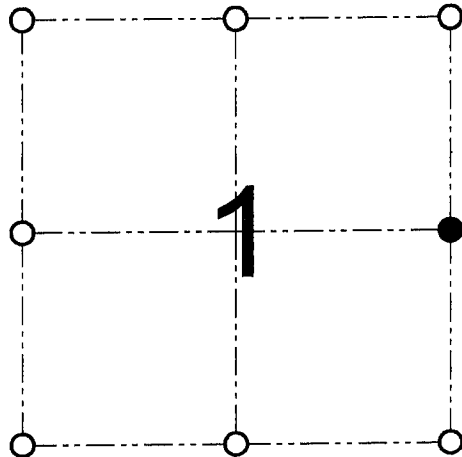
I, Larry L. Austin, do hereby certify that on the 29th day of December, 2000, I found no evidence of the East 1/4 corner of Section 1, Town 5 North, Range 6 West, of the 4th Principal Meridian, and I re-established said corner according to the Wisconsin statutes as shown and described hereon.

Dated this 16th day of January 2001

*Larry L. Austin*  
Larry L. Austin S-1903



SEAL



● = CORNER LOCATION

EAST 1/4 CORNER OF  
SECTION 1, T 5 N R 6 W  
TOWN OF BLOOMINGTON

**HISTORY OF ORIGINAL CORNER ESTABLISHMENT:**

Corner was originally set in 1832 by Sibley. In 1881 J.C. Scott found the original corner. In 1899 Sampson found a Stone.

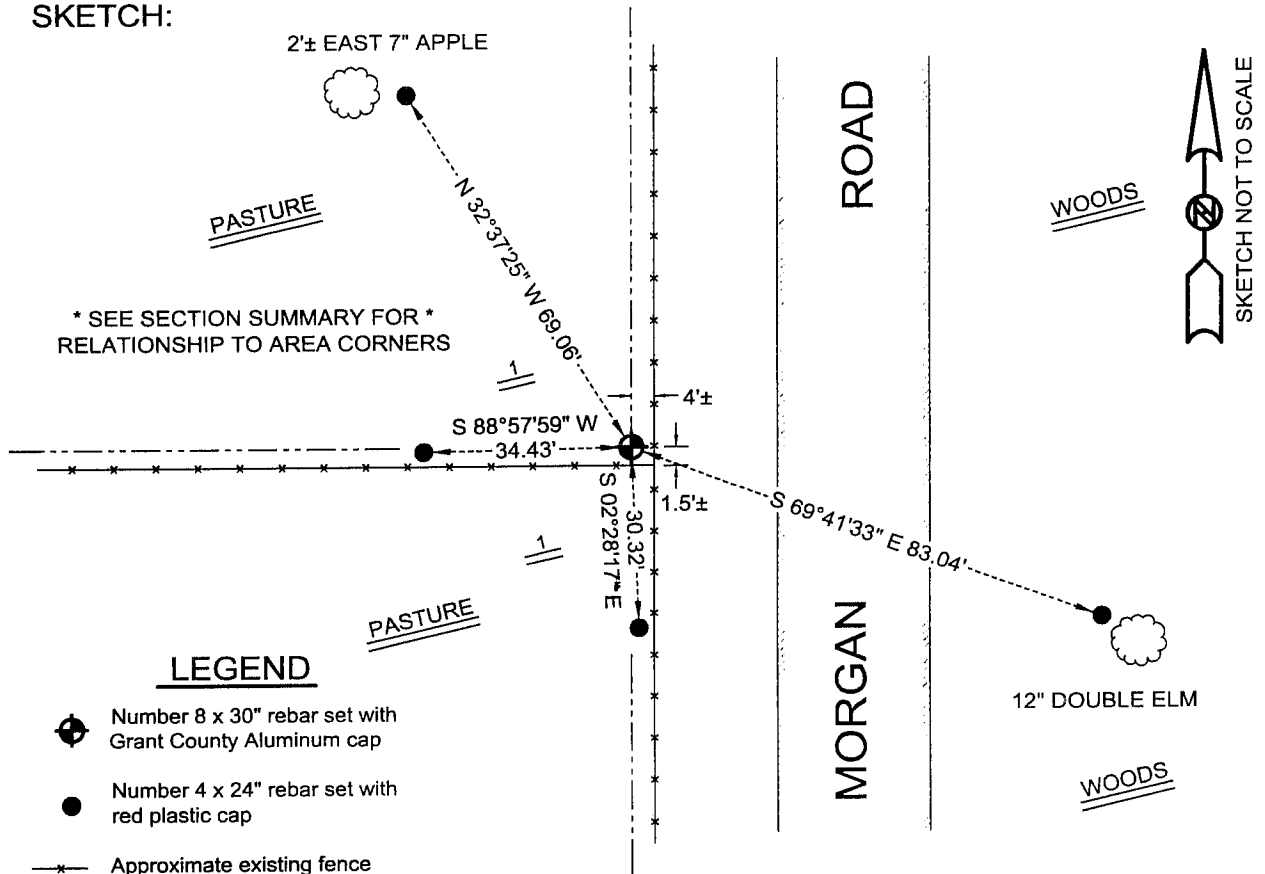
**DESCRIPTION OF CORNER EVIDENCE FOUND:**

I found occupational evidence of both Scott's & Sampson's surveys.  
I reset the corner based on proportionate measurements to these corners.  
Verified this location using EDM & GPS methods.

**DESCRIPTION OF CORNER AND WITNESS MONUMENTS, references and accessories used to perpetuate the original or re-established location of this corner**

WITNESS TO THE CORNER LOCATION: SHANE AUSTIN & TIM FAUVER & BOBBY SEDGWICK

**SKETCH:**



\* SEE SECTION SUMMARY FOR \*  
RELATIONSHIP TO AREA CORNERS

**LEGEND**

- Number 8 x 30" rebar set with Grant County Aluminum cap
- Number 4 x 24" rebar set with red plastic cap
- Approximate existing fence

SKETCH NOT TO SCALE

**AUSTIN ENGINEERING, LLC**  
4211 HWY 81 E, LANCASTER, WI 53813  
PHONE 608-723-6363 FAX 608-723-6702

FIELDBOOK: SDR33, 9814  
G:\T5NR6W\01  
C:\SC14\SWA\TIE\T5NR6W\20

DRAWN BY: SW AUSTIN  
APPROVED: LL AUSTIN  
CREW: BS - SB - SA - TF