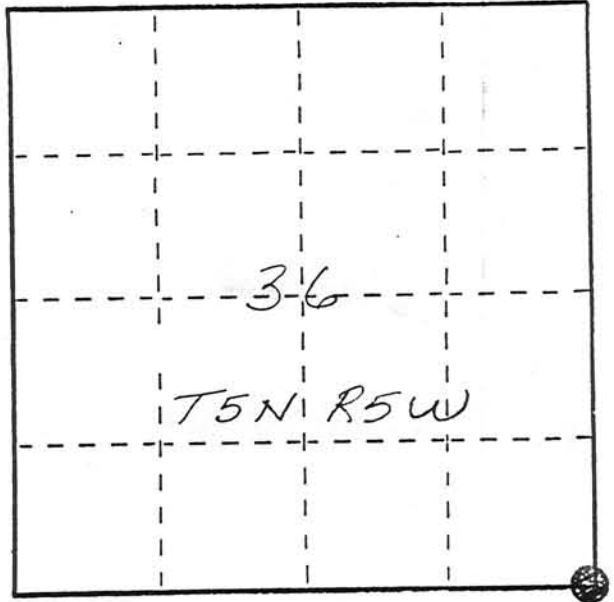


U. S. PUBLIC LAND SURVEY MONUMENT RECORD

INSTRUCTIONS: This record shall show the location of the corner and shall include all of the following nine elements (a through i).

- (a) Identify the corner by reference to the U.S. public land survey system.
 ● = Corner monument restored.

SE corner of section 36
 T5N R5W of the
 4th P.M.
 Town of Bloomington
 Grant County, Wisconsin



MAR 2, 1988

- (b) Describe any record evidence, monument evidence, occupational evidence, testimonial evidence or any other material evidence you considered, and whether the monument was found or placed.

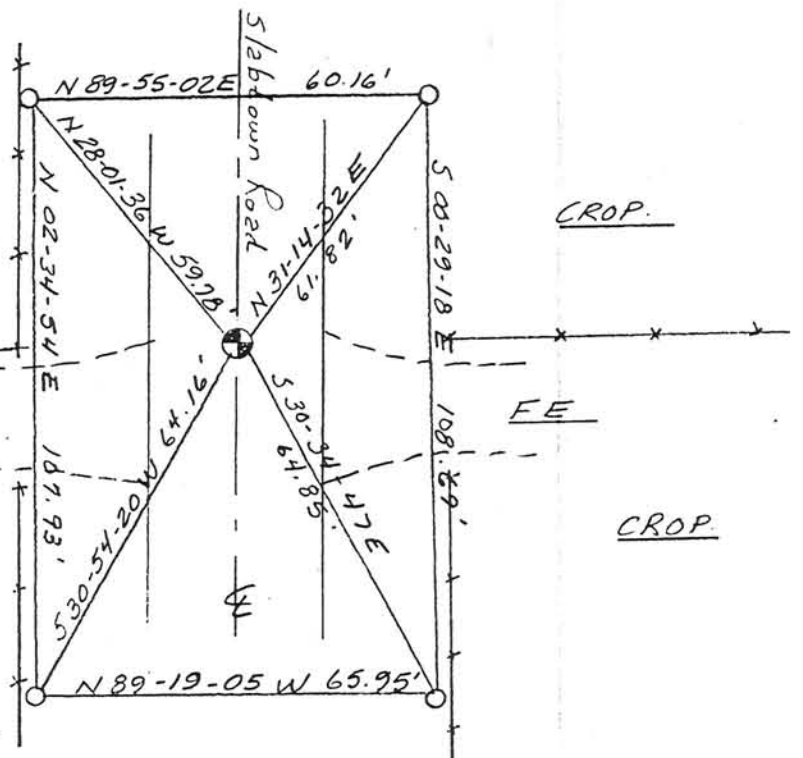
Site was excavated. A stone, 3" x 6" x 14", was found on end about 3' below the road. The stone was not of record as far as I could determine but it was accepted as the correct corner because it fit the existing fence lines. No other evidence was found.

- (c) In the plan view drawing below, provide reference ties to at least 4 witness monuments, or, if the location is within a municipality, to at least 2 witness monuments. (Witness monuments shall be made of concrete, natural stone, iron or other equally durable material, ~~except wood.~~) Describe witness monuments.

- (d) Show a plan view drawing depicting the relevant monuments and reference ties which is sufficient in detail to enable accurate relocation of the corner monument if the corner monument is disturbed. Indicate north.

No Scale
 Bearings - Wis. Grid
 CROP

- - Berntsen A-1 mon. Set 6" below subgrade.
- - Ref. mon. - 3/4" x 24" rebar w/cap.



P.121A

