

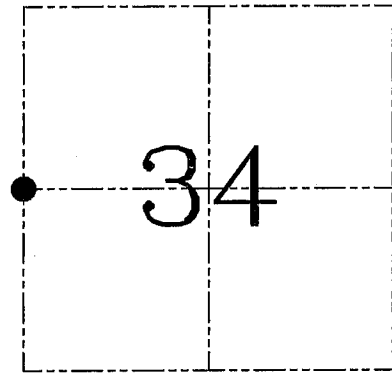
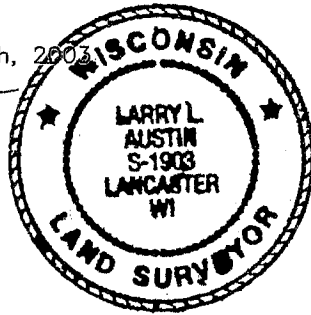
U.S. PUBLIC LAND SURVEY MONUMENT RECORD – GRANT COUNTY, WI
Section 34, Town 5 North Range 5 West, Town of Bloomington

CERTIFICATE

I, Larry L. Austin, do hereby certify that the corner location on this record was determined by me and/or under my direct supervision and that this U.S. public land survey monument record is correct and complete to the best of my knowledge and belief.

Dated this 23rd day of March, 2003

Larry L. Austin
 Larry L. Austin S-1903



● = CORNER LOCATION

HISTORY OF CORNER ESTABLISHMENT

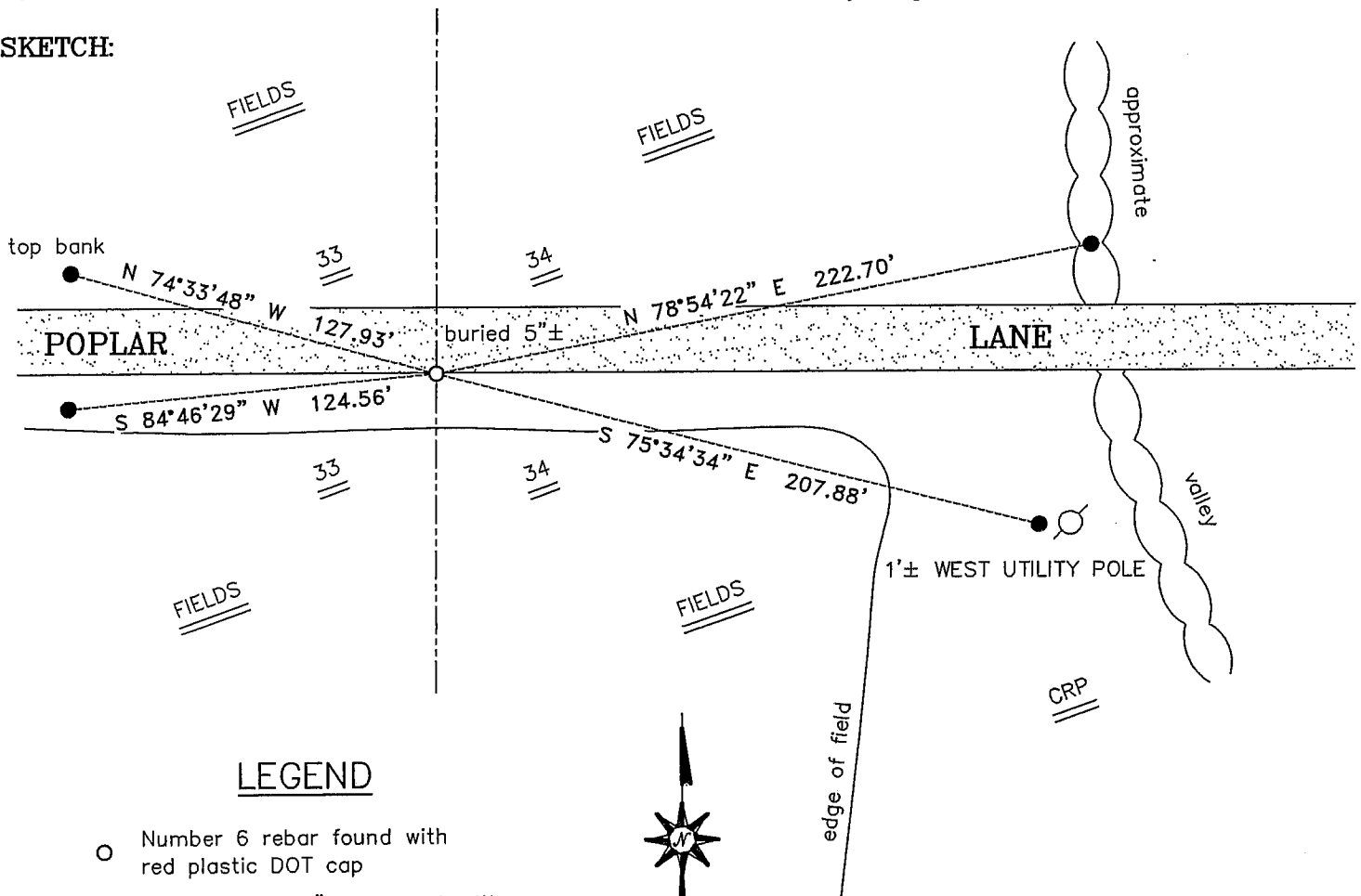
Corner was originally set in 1832 by Robert Clark.
 In 1851 John Everett subdivided Section 34. In 1991 Ron Haden set the corner.

DESCRIPTION OF CORNER EVIDENCE FOUND

I found Hayden's corner and accepted it's location after an EDM & GPS traverse of the area. I set new ties to the corner location.

DESCRIPTION OF CORNER AND WITNESS MONUMENTS, references and accessories used to perpetuate the original or re-established location of this corner. Witnesses to corner location Bobby Sedgwick & Shane Austin & Brad Digman

SKETCH:



LEGEND

- Number 6 rebar found with red plastic DOT cap
- Number 6 x 24" Rebar set with yellow plastic cap
- x— Approximate existing fence

SKETCH NOT TO SCALE

AUSTIN ENGINEERING, LLC
 4211 HWY 81 EAST, LANCASTER, WI 53813
 PHONE 608-723-6363 FAX 608-723-6702

FIELDBOOK: 23-03
 G:\T5NR5W\34A
 SWA\TIE\T5NR5W\117
 JOB NUMBER 03S042

DRAWN BY: SW AUSTIN
 APPROVED: LL AUSTIN

CORNER NUMBER 117

CERTIFIED LAND CORNER

MAY 14 1991

STATE OF WISCONSIN) S.S.
 COUNTY OF)

117

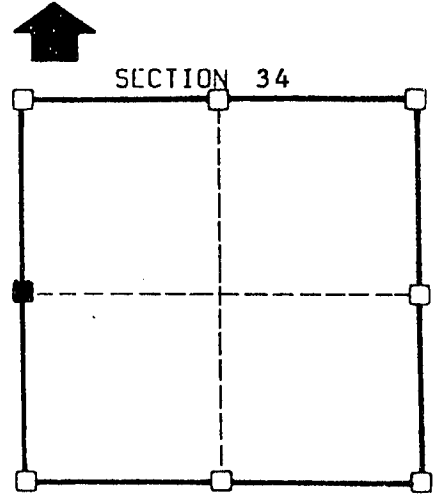
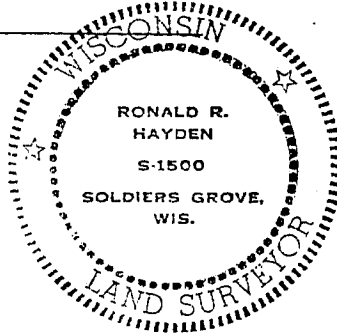
CERTIFICATE

I, Ronald R. Hayden, do hereby certify that on the 1st day of April 1991, I found (evidence) (~~no evidence~~) of the W 1/2 corner of Section 34, T 5 N, R 5 W, Fourth Principal Meridian, and I re-established said corner according to the Wisconsin Statutes as shown and described hereon.

Dated this 1 day of April 1991

Ronald R. Hayden

Ronald R. Hayden, RLS-1500
 Title



■ = corner location
1 5 N R 5 W
 Town of: Bloomington

Seal

History of original corner establishment:

1833 Original Survey. Section subdivision in 1851, by John Evert.

Description of corner evidence found: Found no existing evidence of the corner. Corner's location was determined from existing evidence found in Section 34, Set 3/4" X 30" iron rebar.

Description of corner and witness monuments, references and accessories used to perpetuate the original or re-established location of this corner:

Witnesses to corner location:

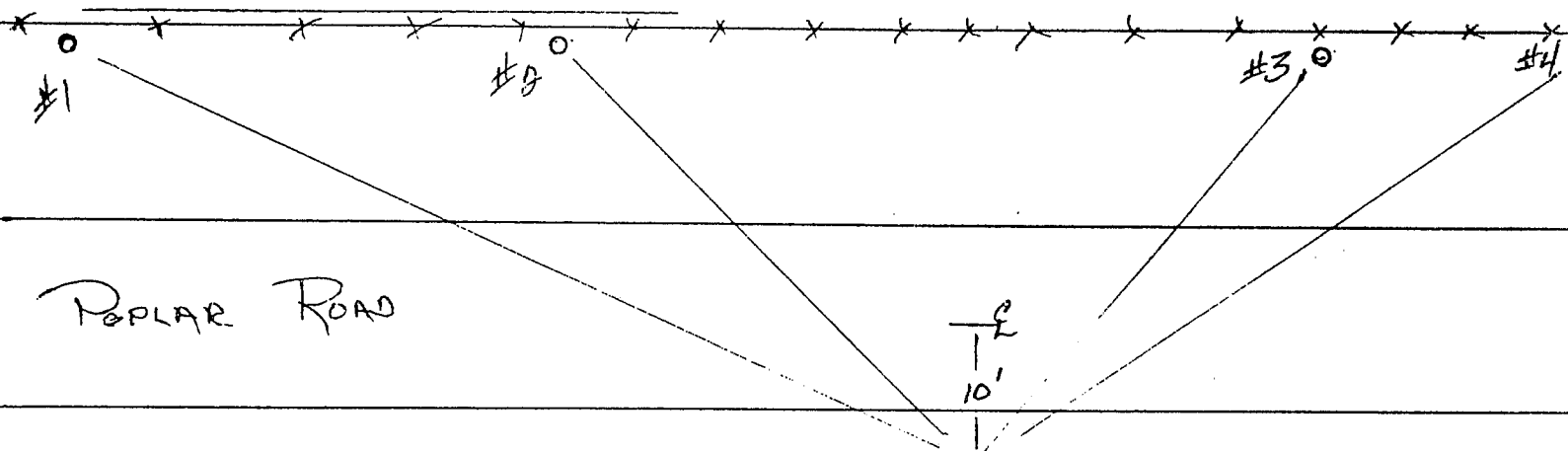
Sketch:

Ronald R. Hayden, RLS

Robbie R. Hayden

Steven E. Hayden

(SEE BACK FOR WITNESS DESCRIPTIONS)



SURVEY CONTROL ORDER

Horizontal	
Vertical	
Corner	East(X)
Control Sta. Name	

WISCONSIN COORDINATE SYSTEM

Corner	East(X)	North(Y)	Elevation(Z)	Zone
Control Sta. Name				

MAY 14 1991

WITNESSES

1. Set 3/4" X 30" iron rebar West of ROW Post.
Witness bears: N 55° E 65.52'.
2. Set 3/4" X 30" iron rebar 1' West of a fence corner.
Witness bears: S 65° E 68.60'.
3. Set 3/4" X 30" iron rebar 1' East of fence corner.
Witness bears: S 55° W 55.33'.
4. Set 3/4" X 30" iron rebar 1' North of ROW Post.
Witness bears: N 60° W 72.22'.