

**U.S. PUBLIC LAND SURVEY MONUMENT RECORD - GRANT COUNTY, WI**

Section 32, Town 5 North Range 5 West, Town of Bloomington East

**CERTIFICATE:**

I, John R. Huseman, do hereby certify that the corner location on this record was determined by me and/or under my direct supervision and that this U.S. Public Land Survey Monument Record is correct and complete to the best of my knowledge and belief.

Dated this 30th day of October, 20 12.

John R. Huseman  
John R. Huseman, RLS-1631-8



● = CORNER LOCATION

**HISTORY OF CORNER ESTABLISHMENT:**

No monumentation or recorded data was found for this corner since original survey.

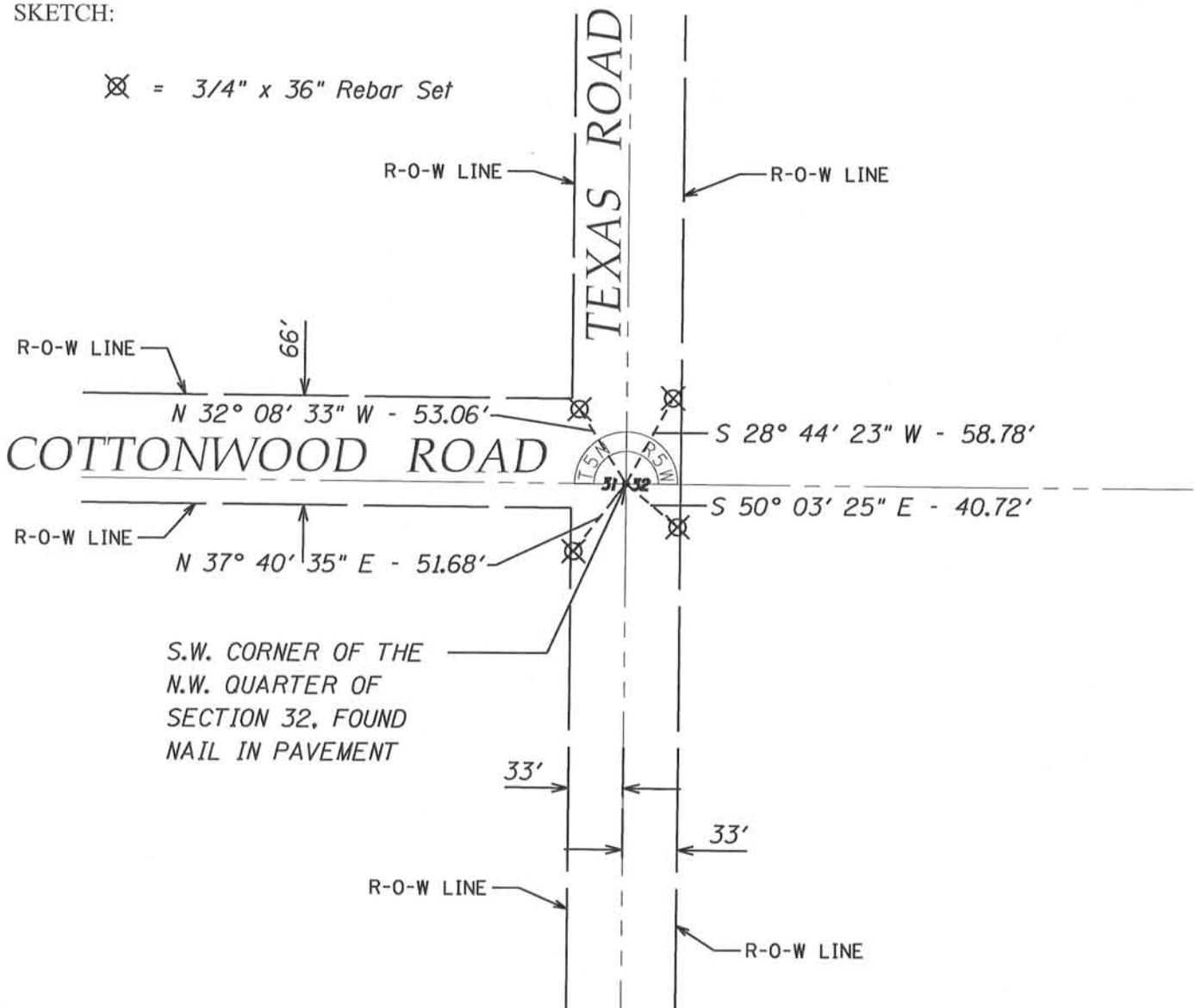
**DESCRIPTION OF CORNER EVIDENCE FOUND:**

Found nail in pvmt. at location. Checked location using double proportionate measurement from existing corners. Location verified by GPS and Total Station measurements. Location fits existing occupation.

**DESCRIPTION OF CORNER AND WITNESS MONUMENTS, references and accessories used to perpetuate the original or re-established location of this corner. Witnesses to corner location Ben Scheffner and Rey Munoz**

**SKETCH:**

⊗ = 3/4" x 36" Rebar Set



NOV 27 2012  
115