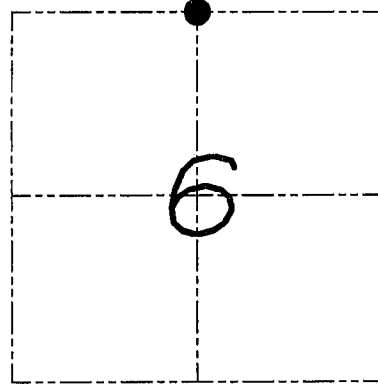
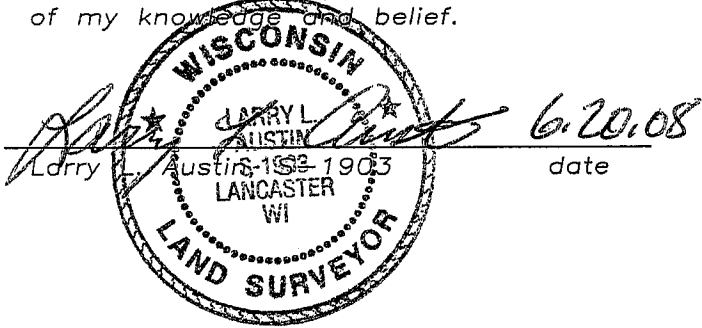


# U.S. PUBLIC LAND SURVEY MONUMENT RECORD

Section 6, Town 4 North Range 5 West, Township of  
Glen Haven, Grant County, Wisconsin

## CERTIFICATE

I, Larry L. Austin, do hereby certify that the corner location on this record was determined by me and/or under my direct supervision and that this U.S. public land survey monument record is correct and complete to the best of my knowledge and belief.



● = CORNER LOCATION

## HISTORY OF CORNER

Corner was originally set by Lyon. In 1854 Clark tied to the corner. In 1855 Overton tied to the corner. No other record of the corner was found.

## CORNER EVIDENCE FOUND

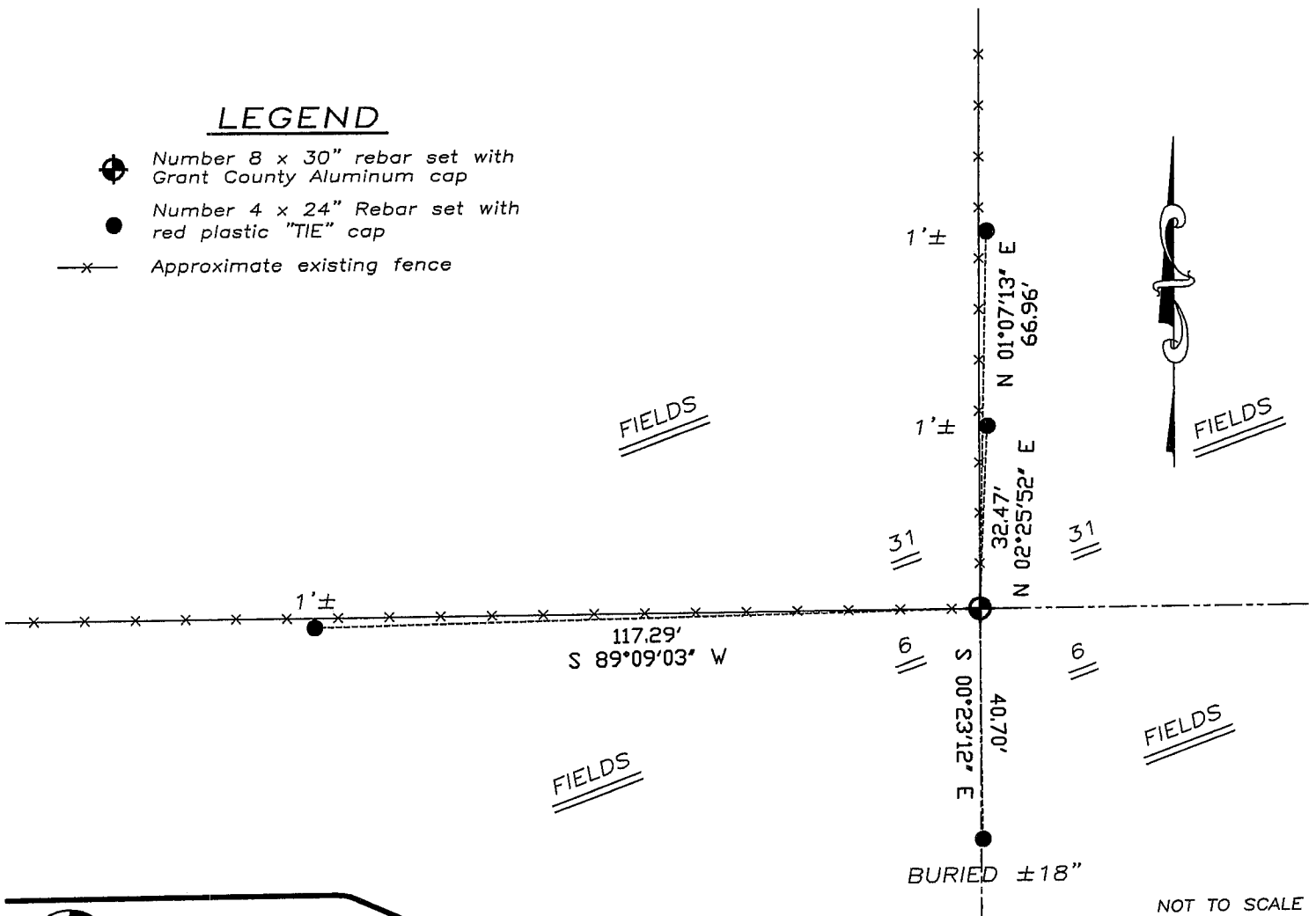
I found an existing fence corner and accepted it's location after an EDM & GPS traverse of the area.

DESCRIPTION OF CORNER AND WITNESS MONUMENTS, references and accessories used to perpetuate the original or re-established location of this corner. Witnesses to monument location Bobby Sedgwick & Brad Digman & Brad Hazen

## SKETCH:

### LEGEND

- ⊕ Number 8 x 30" rebar set with Grant County Aluminum cap
- Number 4 x 24" Rebar set with red plastic "TIE" cap
- x- Approximate existing fence



NOT TO SCALE



**Austin  
Engineering LLC**

4211 HWY 81 E, LANCASTER, WI 53813  
PHONE 608-723-6363 FAX 608-723-6702

JOB NUMBER 08S061  
FIELDBOOK: TDSR, 2711  
G:\T4NR5W\06  
H:\TIE\T4NR5W\12

DRAWN BY: BL STANFLEY  
APPROVED: LL AUSTIN

12