

U.S. PUBLIC LAND SURVEY MONUMENT RECORD - GRANT COUNTY, WI

Section 30, Town 5 North Range 5 West, Town of Bloomington East

CERTIFICATE:

I, John R. Huseman, do hereby certify that the corner location on this record was determined by me and/or under my direct supervision and that this U.S. Public Land Survey Monument Record is correct and complete to the best of my knowledge and belief.

Dated this 29th day of October, 20 12.

John R. Huseman
John R. Huseman, RLS-1631-8



● = CORNER LOCATION

HISTORY OF CORNER ESTABLISHMENT:

No monumentation or recorded data was found for this corner since original survey.

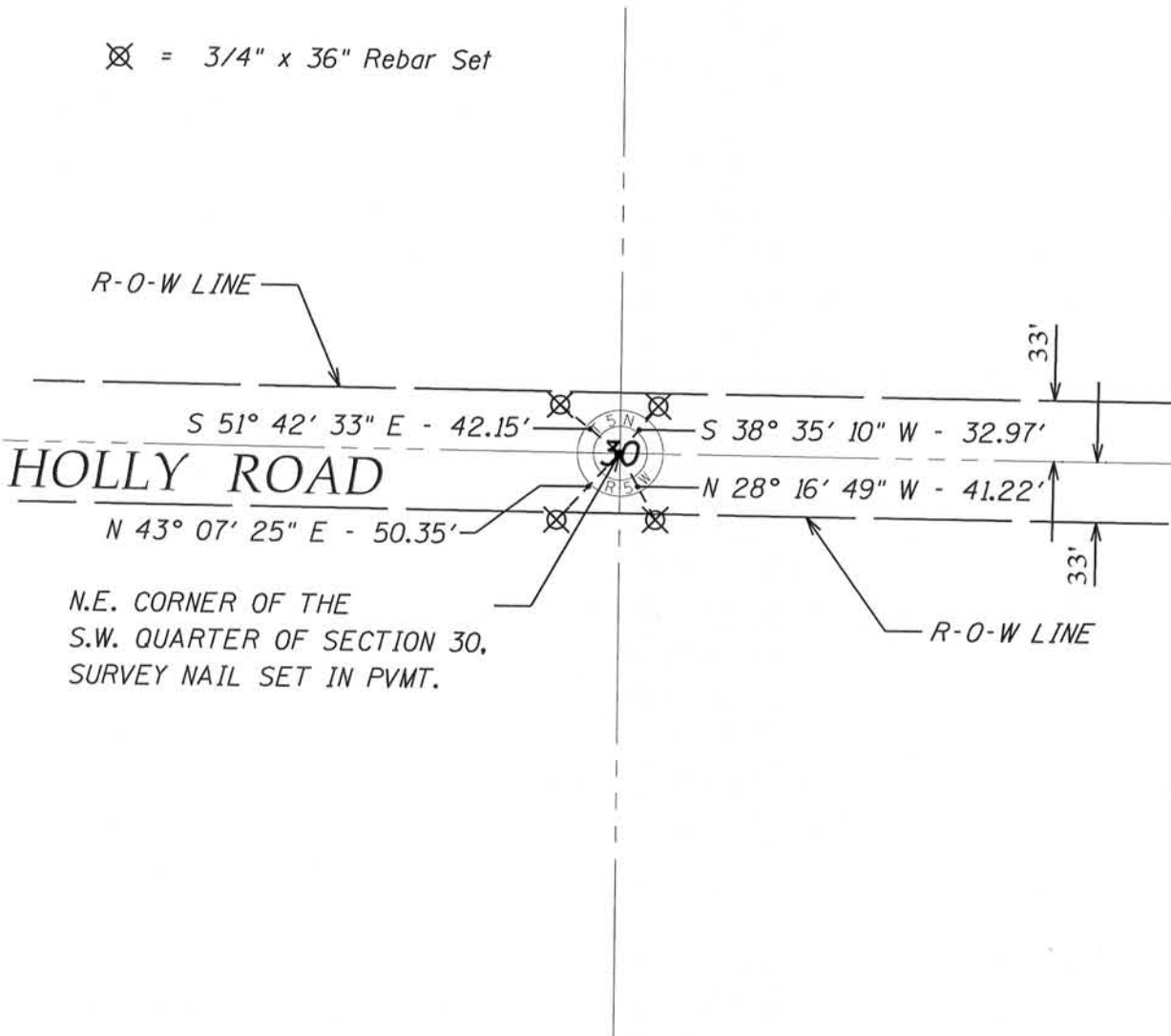
DESCRIPTION OF CORNER EVIDENCE FOUND:

Corner set by intersecting a line between the existing east and west quarter corners and a line between the existing north quarter corner and the re-established south quarter corner. Location verified by GPS and Total Station measurement. The location fits occupation.

DESCRIPTION OF CORNER AND WITNESS MONUMENTS, references and accessories used to perpetuate the original or re-established location of this corner. Witnesses to corner location Ben Scheffner and Rey Munoz

SKETCH:

⊗ = 3/4" x 36" Rebar Set



NOV 27 2012
94.5