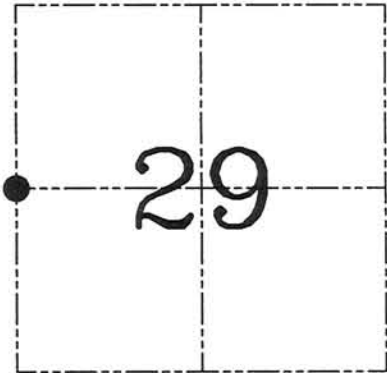


U.S. PUBLIC LAND SURVEY MONUMENT RECORD – GRANT COUNTY, WI
Section 29, Town 5 North Range 5 West, Town of Bloomington

CERTIFICATE

I, Larry L. Austin, do hereby certify that the corner location on this record was determined by me and/or under my direct supervision and that this U.S. public land survey monument record is correct and complete to the best of my knowledge and belief.



● = CORNER LOCATION

Larry L. Austin
 Larry L. Austin, S-1903

2-13-07
 date



HISTORY OF CORNER ESTABLISHMENT

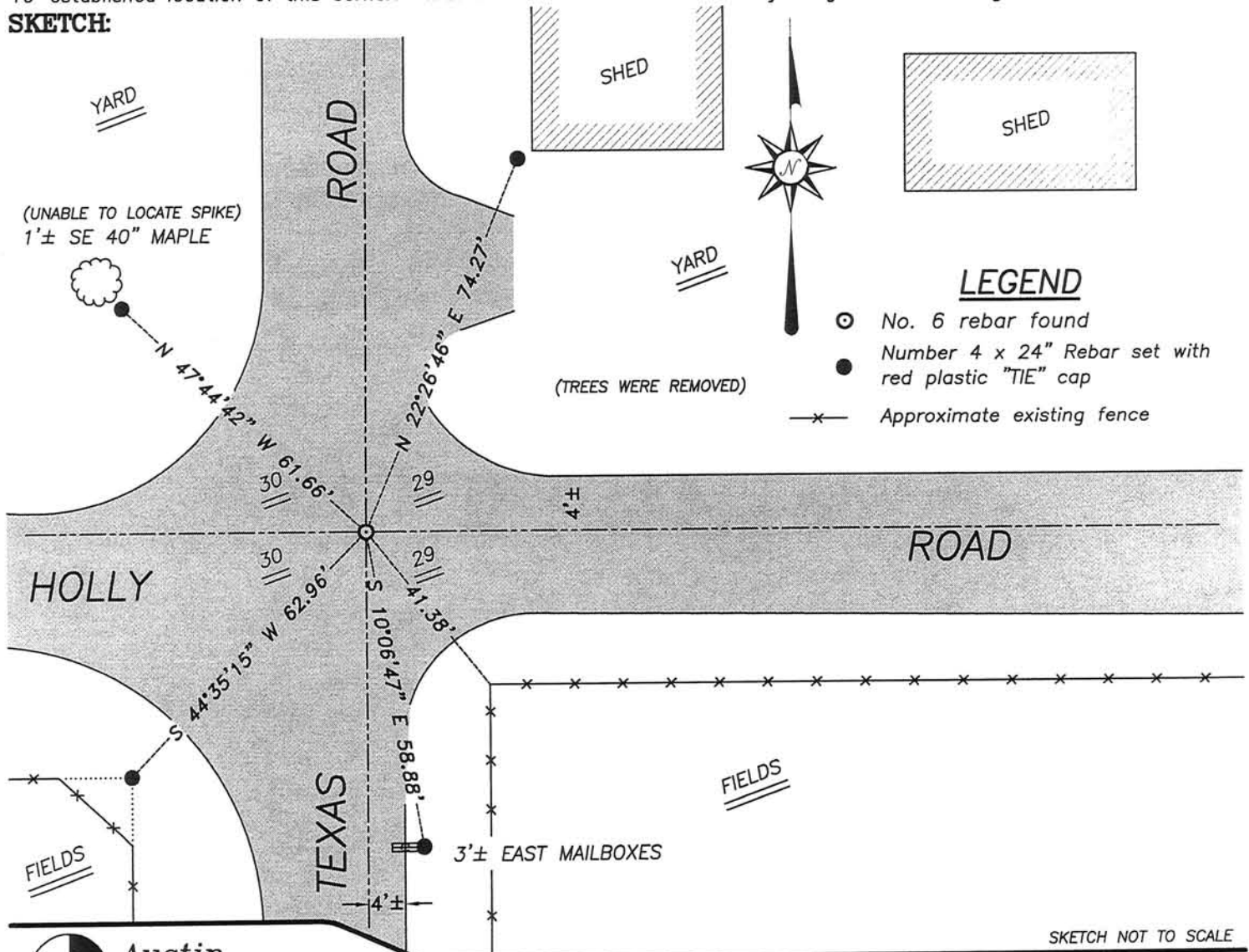
Corner was originally set in 1832 by Robert Clark. In 1989 Marx set and tied the corner. No other record of the corner was found.

DESCRIPTION OF CORNER EVIDENCE FOUND

I found Marx's monument and accepted it's location. All ties were lost. I retied the monument as shown below. Verified this location using EDM & GPS methods.

DESCRIPTION OF CORNER AND WITNESS MONUMENTS, references and accessories used to perpetuate the original or re-established location of this corner. Witnesses to corner location Bobby Sedgwick & Brad Digman & Shane Austin

SKETCH:



Austin Engineering LLC

4211 HWY 81 E, LANCASTER, WI 53813
 PHONE 608-723-6363 FAX 608-723-6702

JOB NUMBER 06S247
 FIELDBOOK: TDSR, 2609
 G:\T5NR5W\29
 H:\TIE\T5NR5W\95

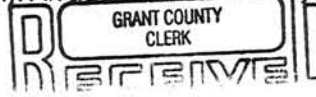
DRAWN BY: SW AUSTIN
 APPROVED: LL AUSTIN

U.S. PUBLIC LAND SURVEY MONUMENT RECORD

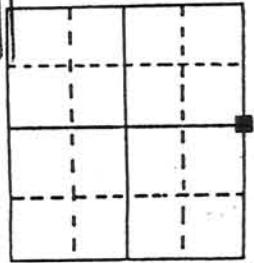
Note: This form is intended and designed to fulfill all requirements of Wisconsin Administrative Code, Chapter A-E 5.02, U.S. Public Land Survey Monument Record (3) (a) (b) (c) (d) (e) (f) (g) (h) (i). An additional sheet may be added if necessary to conform with said requirements.

(a) Corner location: Township 5 North
 Range 5 East/West

Town/City/Village Bloomington
 County Grant



JUN 14 1989



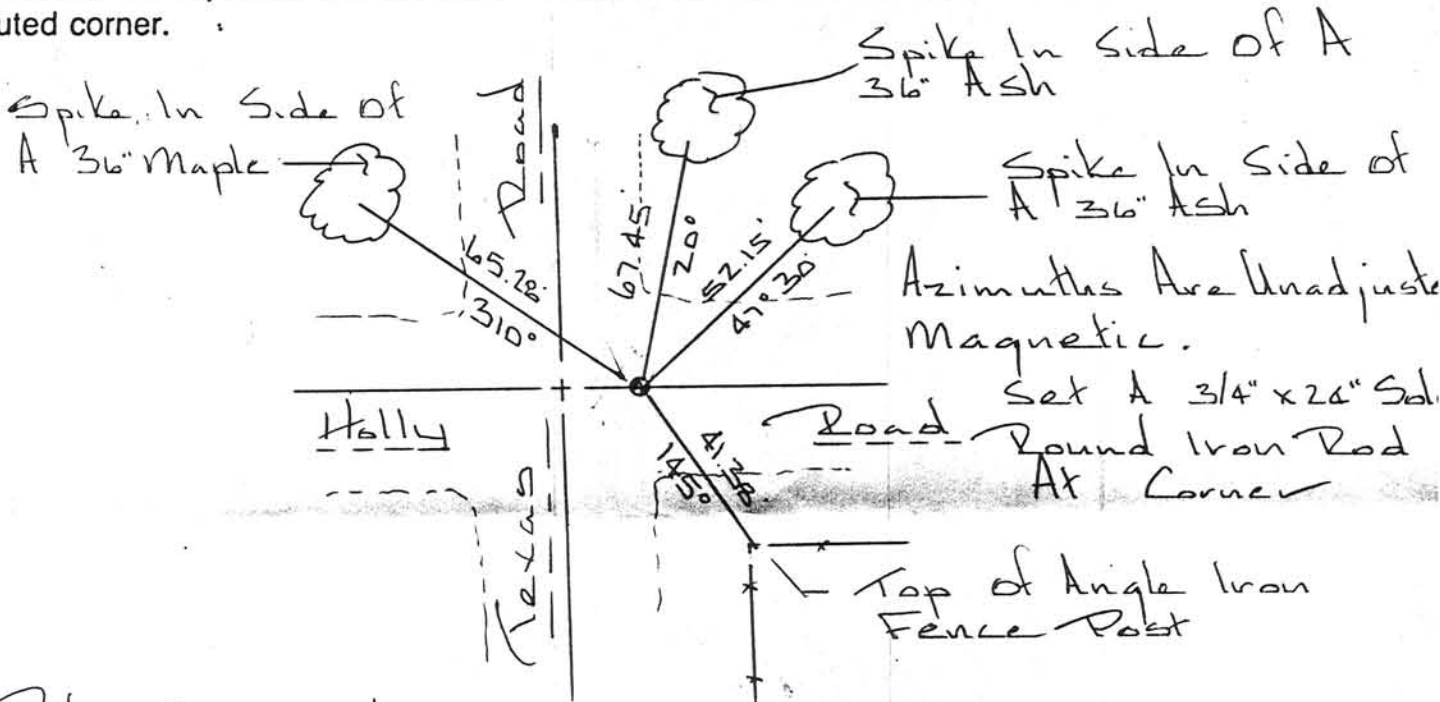
Section 30

(b) (f) (g) (h) Description of monument found at this corner and if it was accepted, state all evidence (material, testimonial, occupational, plats, records, other monuments) used as a basis for accepting. If not accepted or if nothing was found, state evidence used as basis for establishing location. If reestablished through lost corner proportionate methods, indicate all monuments, distances and directions used to establish.

Set Corner To **RECEIVED** Occupation At Forty Lines North - South and West.

JUN 14 1989

(c) (d) (e) Plan view of corner with ties to at least 4 witness monuments. If in disagreement with previously established corner, show the distances between the two corners and also indicate the ties to the disputed corner.



(i) I, Richard Marks
 (type or print name) certify that the corner location on this record was determined by me or under my direction and control and that this U.S. Public Land Survey Monument Record is correct and complete to the best of my knowledge and belief.

[Signature] Date 6/12/89



Affix seal here