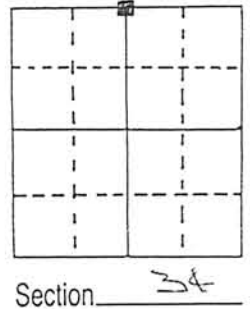


# U.S. PUBLIC LAND SURVEY MONUMENT RECORD

Note: This form is intended and designed to fulfill all requirements of Wisconsin Administrative Code, Chapter A-E 5.02, U.S. Public Land Survey Monument Record (3) (a) (b) (c) (d) (e) (f) (g) (h) (i). An additional sheet may be added if necessary to conform with said requirements.

(a) Corner location: Township 5 North  
 Range 5 East/West

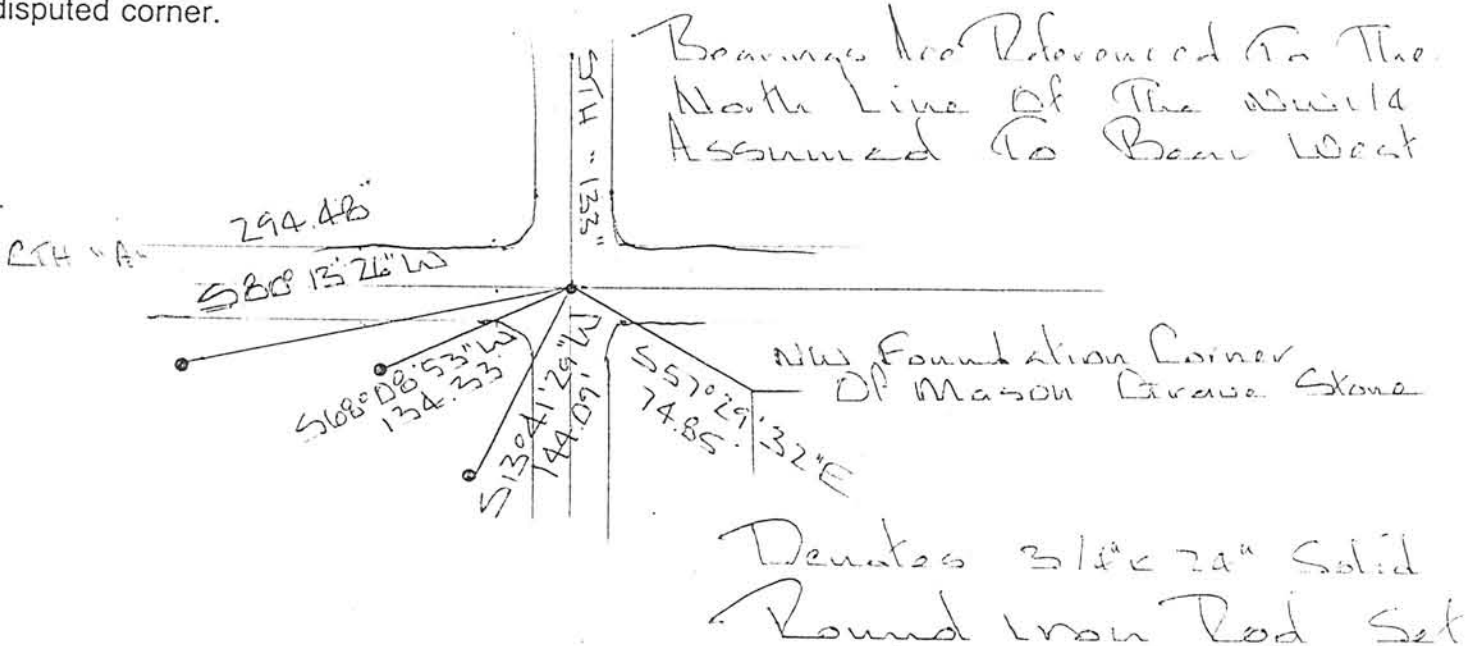
Town/City/Village Bloomington  
 County Grant



(b) (f) (g) (h) Description of monument found at this corner and if it was accepted, state all evidence (material, testimonial, occupational, plats, records, other monuments) used as a basis for accepting. If not accepted or if nothing was found, state evidence used as basis for establishing location. If reestablished through lost corner proportionate methods, indicate all monuments, distances and directions used to establish.

Found P.K. Nail in C of "A" And Town Road East And West And C of State Highway "133" North And South. Location fit Cemetery Fences East And South - (3 Acre Parcel in The Corner of The NW-NE) Records  
 1) Volume C-125 - John Clark - Sept 1859 And Volume B-265 - May 1851  
 2) Plat Map For T1H "A" And S1H "133"  
 3) Schaefer was P.K. Corner.

(c) (d) (e) Plan view of corner with ties to at least 4 witness monuments. If in disagreement with previously established corner, show the distances between the two corners and also indicate the ties to the disputed corner.



(i) I, Richard Marks  
 (type or print name) certify that the corner location on this record was determined by me or under my direction and control and that this U.S. Public Land Survey Monument Record is correct and complete to the best of my knowledge and belief.

Signature [Signature] Date \_\_\_\_\_

