

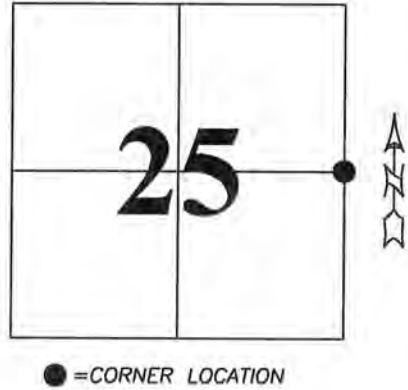
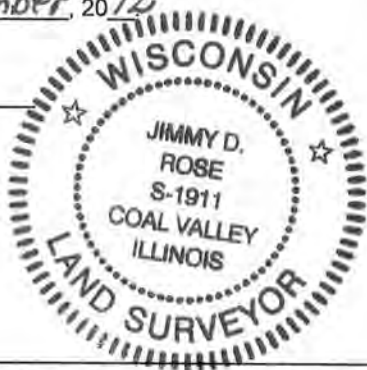
U.S. PUBLIC LAND SURVEY MONUMENT RECORD - GRANT COUNTY, WI
 Section 25, Town 5 North Range 5 West, Town of Bloomington East

CERTIFICATE:

I, Jimmy D. Rose, do hereby certify that the corner location on this record was determined by me and/or under my direct supervision and that this U.S. Public Land Survey Monument Record is correct and complete to the best of my knowledge and belief.

Dated this 11th day of December, 2012

Jimmy D. Rose
 Jimmy D. Rose S-1911



HISTORY OF CORNER ESTABLISHMENT: MONUMENT WITH GRANT COUNTY CAP ESTABLISHED IN 1997 BY BRUCE BOWDEN.

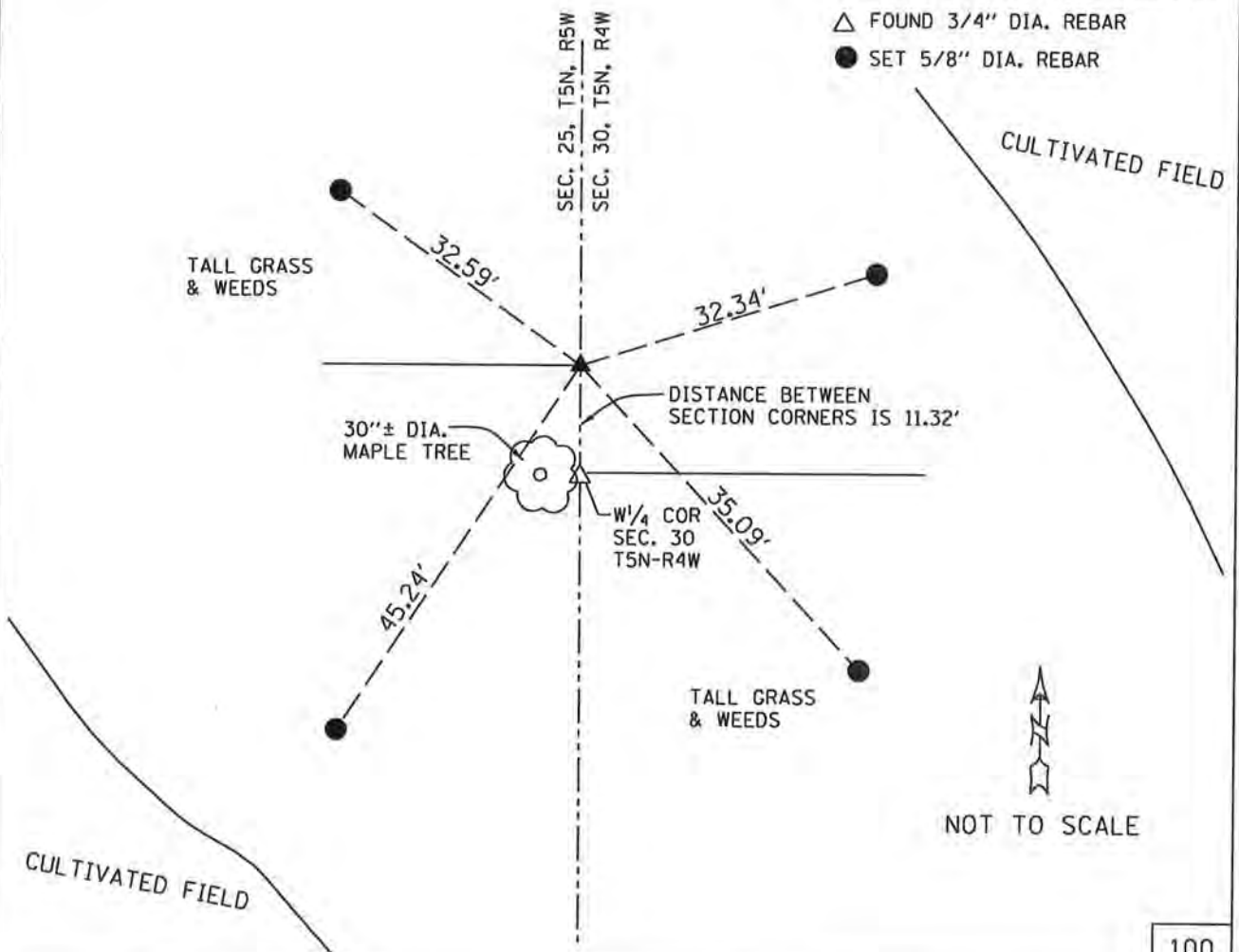
DESCRIPTION OF CORNER EVIDENCE FOUND: FOUND GRANT COUNTY MONUMENT. SET NEW ACCESSORY TIES. LOCATION VERIFIED WITH TRAVERSE OF SECTION 25.

DESCRIPTION OF CORNER AND WITNESS MONUMENTS, references and accessories used to perpetuate the original or re-established location of this corner.

SKETCH:

LEGEND

- ▲ FOUND GRANT COUNTY MONUMENT
- △ FOUND 3/4" DIA. REBAR
- SET 5/8" DIA. REBAR

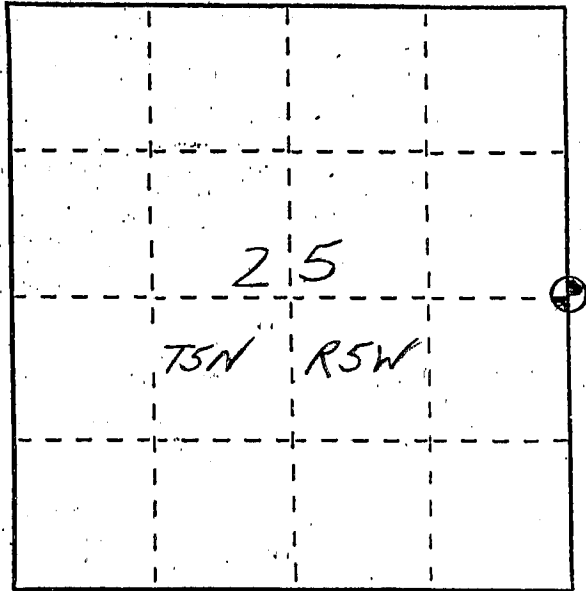


U. S. PUBLIC LAND SURVEY MONUMENT RECORD

INSTRUCTIONS: This record shall show the location of the corner and shall include all of the following nine elements (a through i).

- (a) Identify the corner by reference to the U.S. public land survey system.
- = Corner monument restored.

The East Quarter corner of Section 25, Town 5 North, Range 5 West, Bloomington Township, Grant County Wisconsin.



- (b) Describe any record evidence, monument evidence, occupational evidence, testimonial evidence or any other material evidence you considered, and whether the monument was found or placed.

Monument set from tie to original bearing tree.

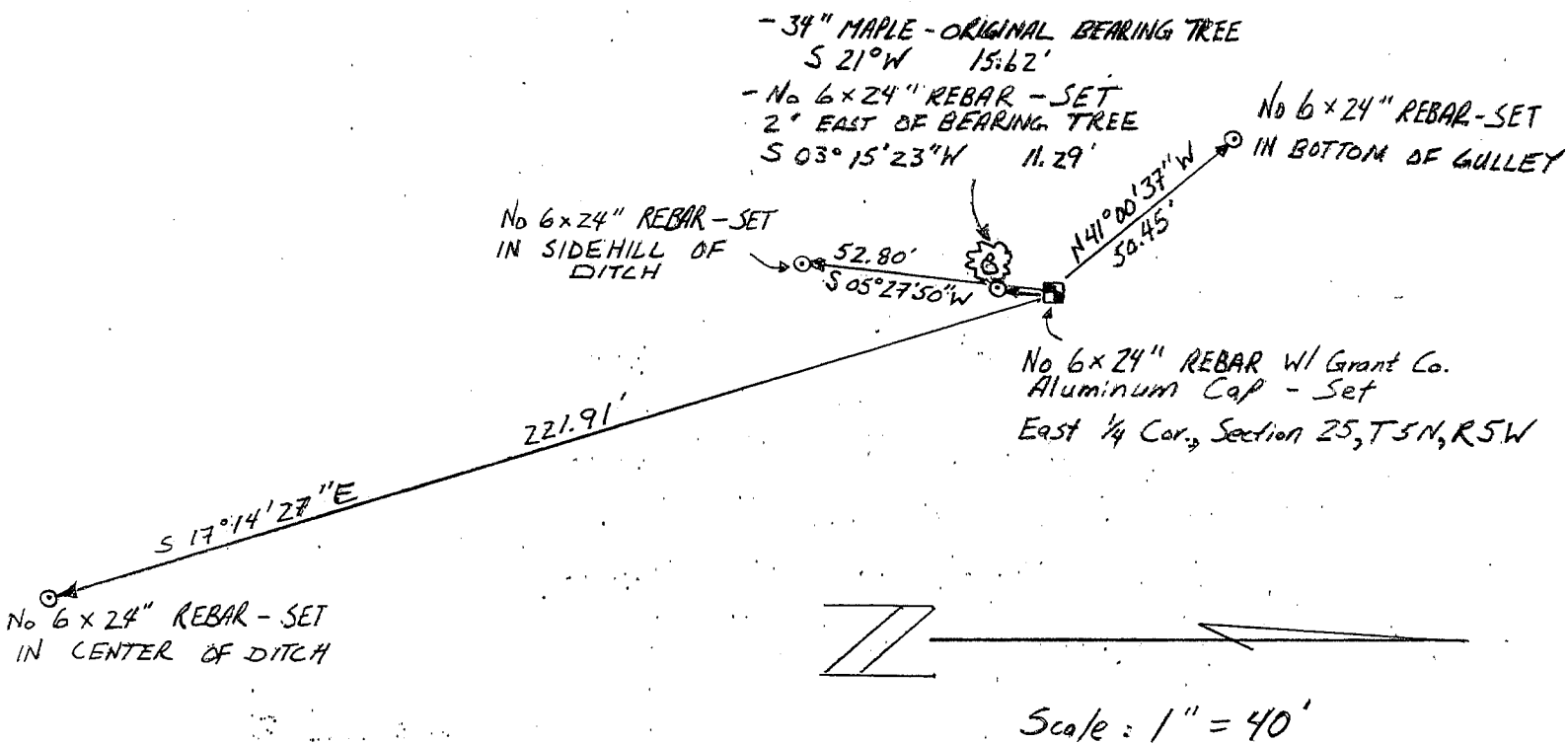
- (c) In the plan view drawing below, provide reference ties to at least 4 witness monuments, or, if the location is within a municipality, to at least 2 witness monuments. (Witness monuments shall be made of concrete, natural stone, iron or other equally durable material, ~~except~~ wood.) Describe witness monuments.

- (d) Show a plan view drawing depicting the relevant monuments and reference ties which is sufficient in detail to enable accurate relocation of the corner monument if the corner monument is disturbed. Indicate north.

Grant County Coordinates

$$x = 767613.0$$

$$y = 535391.6$$



U.S. PUBLIC LAND SURVEY MONUMENT RECORD - GRANT COUNTY, WI

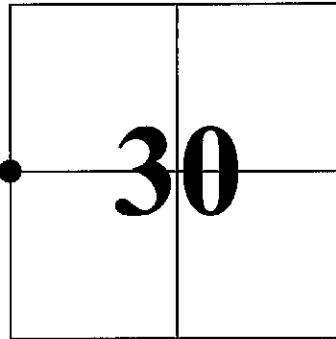
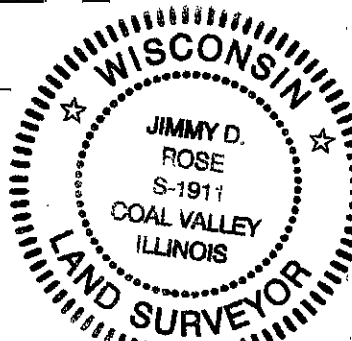
Section 30, Town 5 North Range 4 West, Town of Little Grant

CERTIFICATE:

I, Jimmy D. Rose, do hereby certify that the corner location on this record was determined by me and/or under my direct supervision and that this U.S. Public Land Survey Monument Record is correct and complete to the best of my knowledge and belief.

Dated this 21st day of December, 2012

Jimmy D. Rose
Jimmy D. Rose S-1911



● = CORNER LOCATION

HISTORY OF CORNER ESTABLISHMENT: NO RECORD OF CORNER BEYOND ORIGINAL GOVERNMENT SURVEYS WAS UNCOVERED.

DESCRIPTION OF CORNER EVIDENCE FOUND: ESTABLISHED CORNER LOCATION USING GLO PLAT. LOCATION IS SUPPORTED BY TRAVERSE TO ADJOINING CORNERS.

DESCRIPTION OF CORNER AND WITNESS MONUMENTS, references and accessories used to perpetuate the original or re-established location of this corner.

SKETCH:

LEGEND

- ▲ FOUND GRANT COUNTY MONUMENT
- △ FOUND 3/4" DIA. REBAR
- SET 5/8" DIA. REBAR

