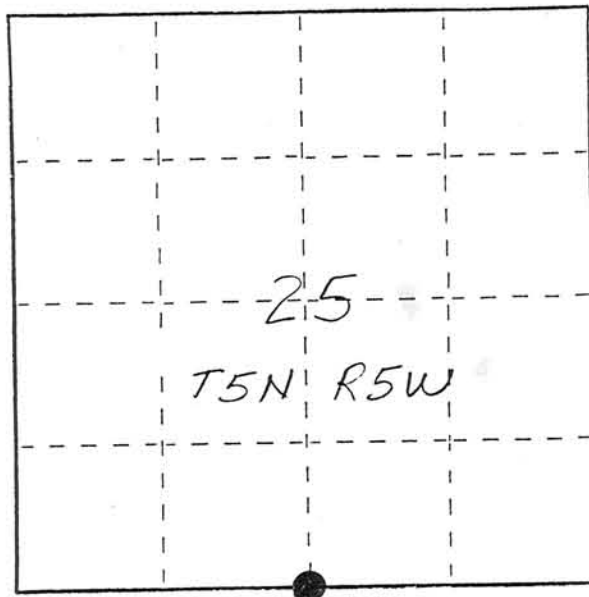


# U. S. PUBLIC LAND SURVEY MONUMENT RECORD

INSTRUCTIONS: This record shall show the location of the corner and shall include all of the following nine elements (a through i).

- (a) Identify the corner by reference to the U.S. public land survey system.  
 ● = Corner monument restored.

*5/4 corner section 25  
 T5N R5W of the  
 4th. P.M.  
 Town of Bloomington,  
 Grant County, Wisconsin*



- (b) Describe any record evidence, monument evidence, occupational evidence, testimonial evidence or any other material evidence you considered, and whether the monument was found or placed.

*Monument was set by intersecting line between reestablished N1/4 corner of said section and existing fence corner at the NE SE SW with line between reestablished SW corner of said section and fence corner at the SW SE SW. I believe true line runs down gully which wasn't ever fenced. No other evidence was found in the area.*

- (c) In the plan view drawing below, provide reference ties to at least 4 witness monuments, or, if the location is within a municipality, to at least 2 witness monuments. (Witness monuments shall be made of concrete, natural stone, iron or other equally durable material, ~~except wood.~~) Describe witness monuments.

- (d) Show a plan view drawing depicting the relevant monuments and reference ties which is sufficient in detail to enable accurate relocation of the corner monument if the corner monument is disturbed. Indicate north.

