

U.S. PUBLIC LAND SURVEY MONUMENT RECORD - GRANT COUNTY, WI

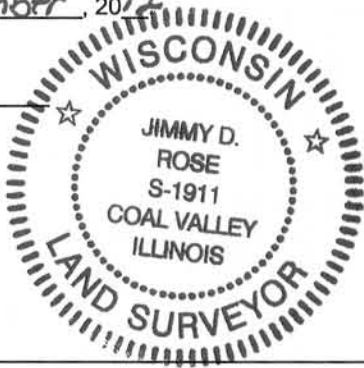
Section 25, Town 5 North Range 5 West, Town of Bloomington East

CERTIFICATE:

I, Jimmy D. Rose, do hereby certify that the corner location on this record was determined by me and/or under my direct supervision and that this U.S. Public Land Survey Monument Record is correct and complete to the best of my knowledge and belief.

Dated this 17<sup>th</sup> day of December, 2012

*Jimmy D. Rose*  
Jimmy D. Rose S-1911



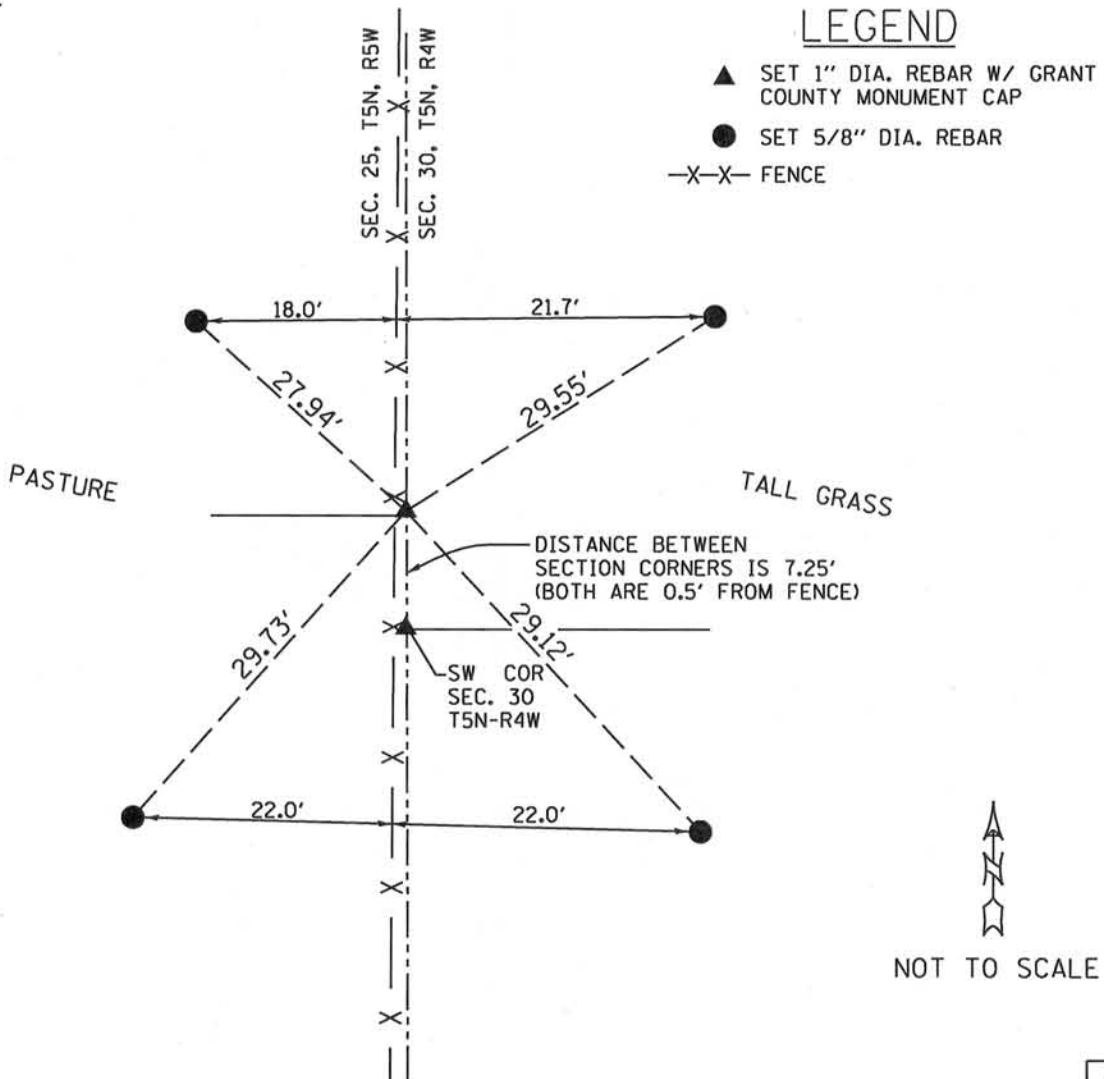
● = CORNER LOCATION

HISTORY OF CORNER ESTABLISHMENT: NO RECORD OF CORNER BEYOND ORIGINAL GOVERNMENT SURVEYS WAS UNCOVERED.

DESCRIPTION OF CORNER EVIDENCE FOUND: ESTABLISHED CORNER LOCATION UTILIZING TRAVERSE OF SECTION 25 AND OCCUPATION EVIDENCE WHERE AVAILABLE.

DESCRIPTION OF CORNER AND WITNESS MONUMENTS, references and accessories used to perpetuate the original or re-established location of this corner.

SKETCH:



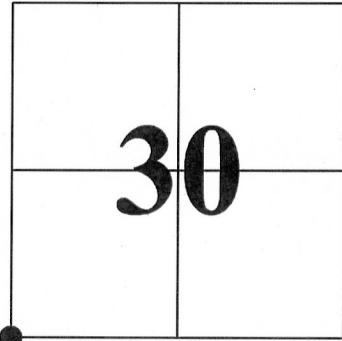
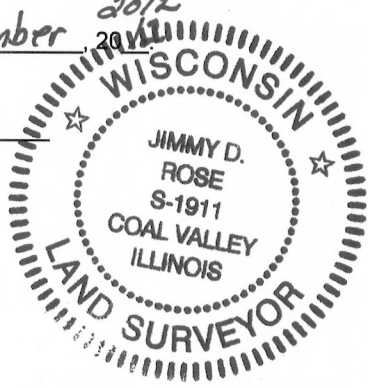
**U.S. PUBLIC LAND SURVEY MONUMENT RECORD - GRANT COUNTY, WI**  
 Section 30, Town 5 North Range 4 West, Town of Little Grant

**CERTIFICATE:**

I, Jimmy D. Rose, do hereby certify that the corner location on this record was determined by me and/or under my direct supervision and that this U.S. Public Land Survey Monument Record is correct and complete to the best of my knowledge and belief.

Dated this 11<sup>th</sup> day of December, 2012

*Jimmy D. Rose*  
 Jimmy D. Rose S-1911



● = CORNER LOCATION



**HISTORY OF CORNER ESTABLISHMENT:** NO RECORD OF CORNER BEYOND ORIGINAL GOVERNMENT SURVEYS WAS UNCOVERED.

**DESCRIPTION OF CORNER EVIDENCE FOUND:** ESTABLISHED CORNER LOCATION UTILIZING TRAVERSE OF SECTION 30 ALONG WITH OCCUPATION EVIDENCE WHERE AVAILABLE.

**DESCRIPTION OF CORNER AND WITNESS MONUMENTS, references and accessories used to perpetuate the original or re-established location of this corner.**

**SKETCH:**

