

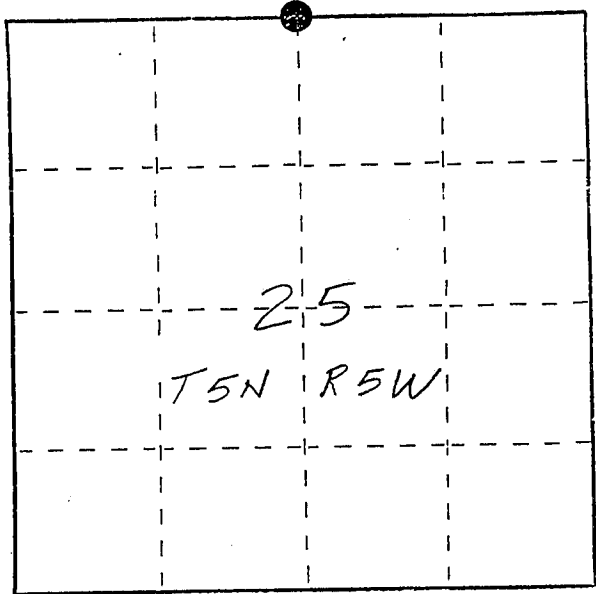
U. S. PUBLIC LAND SURVEY MONUMENT RECORD

INSTRUCTIONS: This record shall show the location of the corner and shall include all of the following nine elements (a through i).

- (a) Identify the corner by reference to the U.S. public land survey system.

● = Corner monument restored.

*N 1/4 corner Section 25
T5N R5W of the
4th P.M.
Town of Bloomington
Grant County, Wisconsin.*

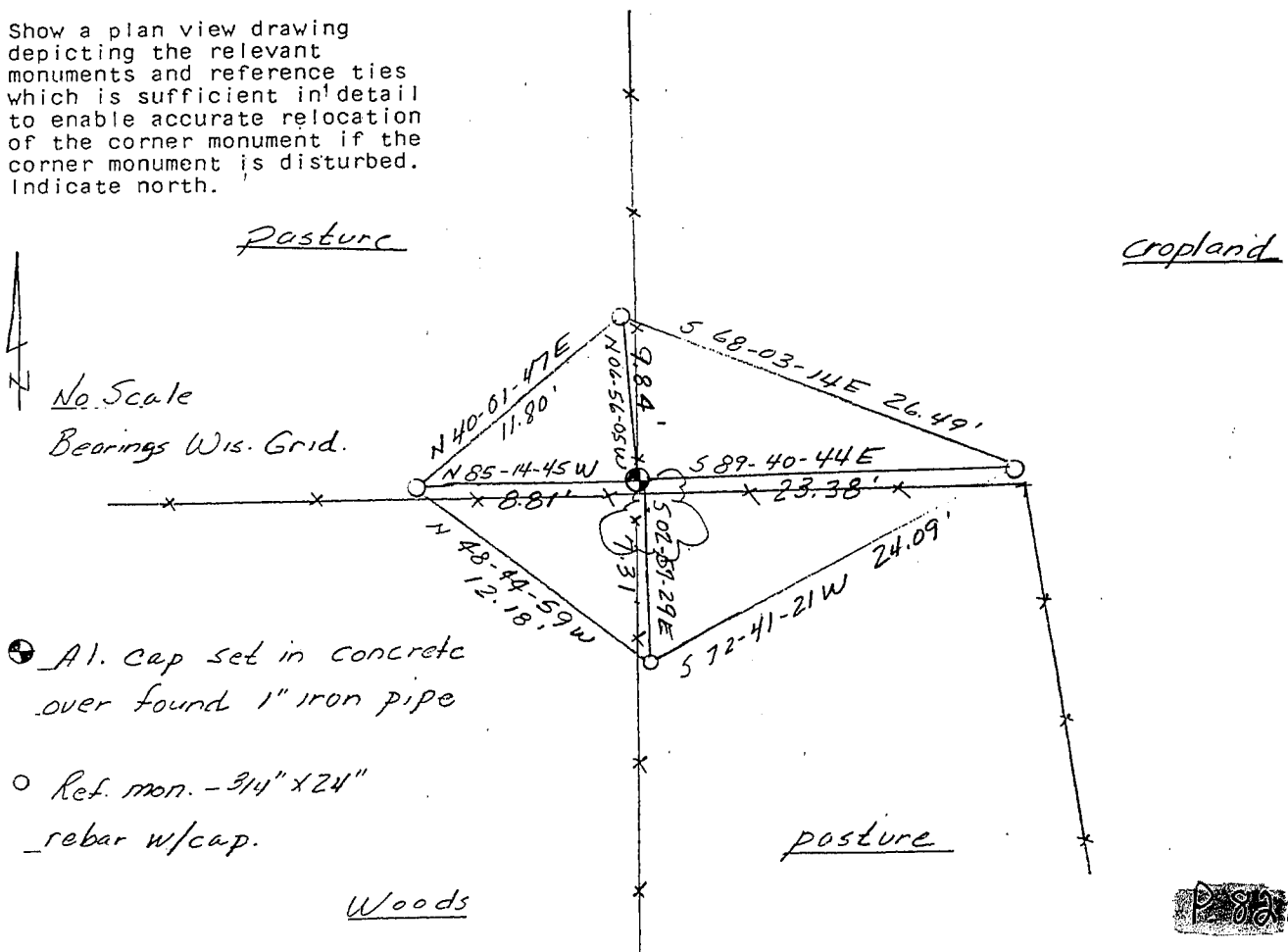


- (b) Describe any record evidence, monument evidence, occupational evidence, testimonial evidence or any other material evidence you considered, and whether the monument was found or placed.

Monument set modifies on existing 1" iron pipe found as described in a 1981 survey by K.A. Kerst. A 3/8" x 4' rebar was driven in 1" iron pipe. The ground was dug away from the pipe and a concrete collar was poured and an aluminum cap was set over the top of the pipe. Location fits existing fences.

- (c) In the plan view drawing below, provide reference ties to at least 4 witness monuments, or, if the location is within a municipality, to at least 2 witness monuments. (Witness monuments shall be made of concrete, natural stone, iron or other equally durable material, ~~except~~ ~~wood~~.) Describe witness monuments.

- (d) Show a plan view drawing depicting the relevant monuments and reference ties which is sufficient in detail to enable accurate relocation of the corner monument if the corner monument is disturbed. Indicate north.



● A1. Cap set in concrete over found 1" iron pipe

○ Ref. mon. - 3/4" x 24" rebar w/cap.

P. 80A