

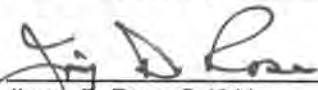
U.S. PUBLIC LAND SURVEY MONUMENT RECORD - GRANT COUNTY, WI

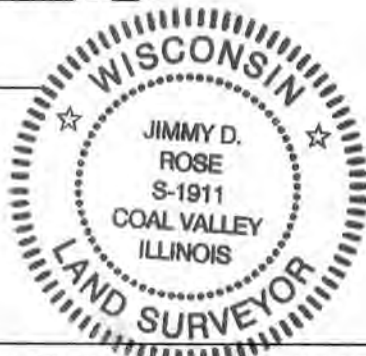
Section 24, Town 5 North Range 5 West, Town of Bloomington East

CERTIFICATE:

I, Jimmy D. Rose, do hereby certify that the corner location on this record was determined by me and/or under my direct supervision and that this U.S. Public Land Survey Monument Record is correct and complete to the best of my knowledge and belief.

Dated this 11th day of December, 20 12


Jimmy D. Rose S-1911



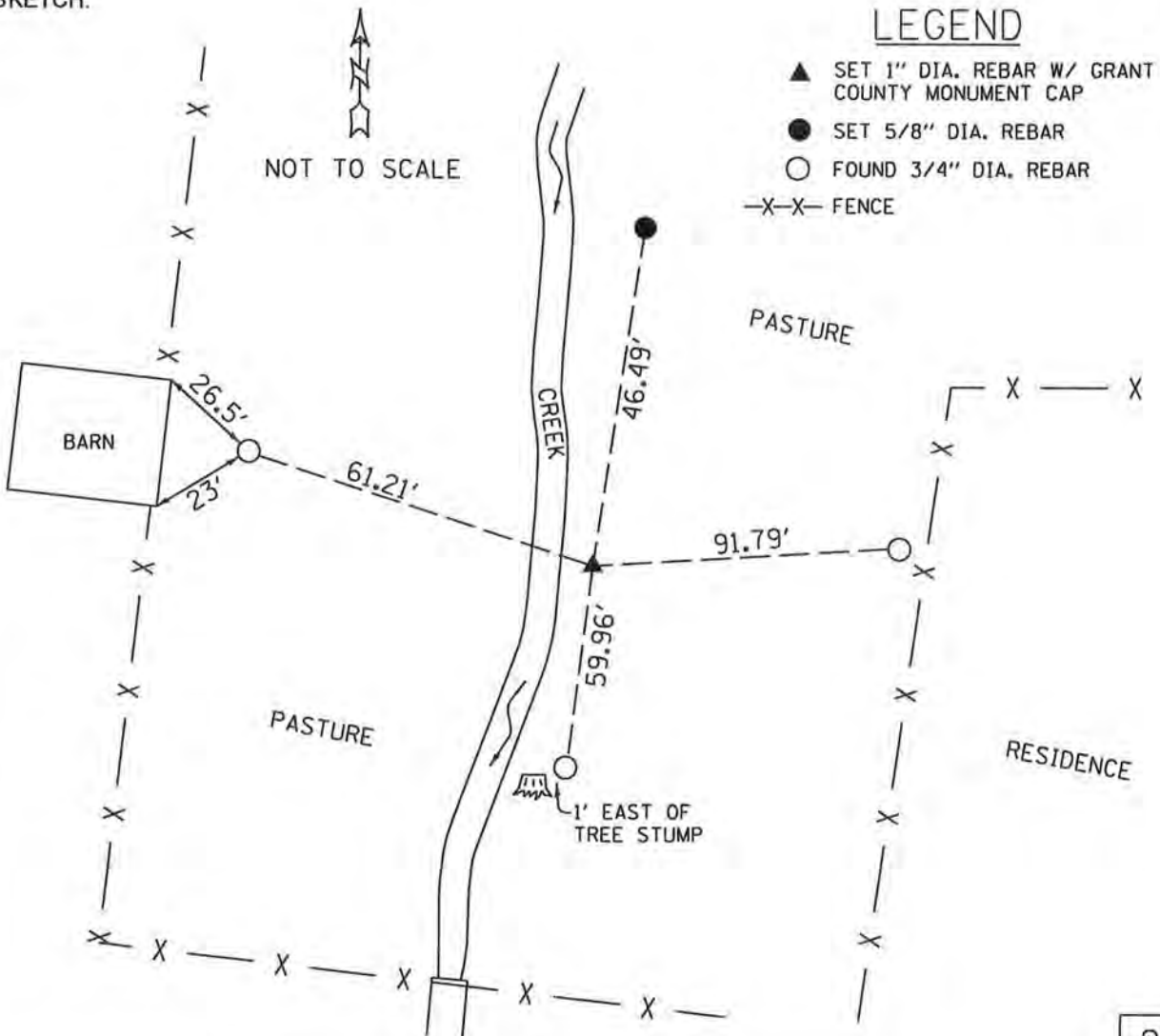
● = CORNER LOCATION

HISTORY OF CORNER ESTABLISHMENT: A 5"x5"x30" CONCRETE MONUMENT WAS REPLACED BY A DOT ALUMINUM CAP SET IN A ROCK OUTCROP IN 1988.

DESCRIPTION OF CORNER EVIDENCE FOUND: THE DOT CAP WAS NOT FOUND. THREE OF THE FOUR ACCESSORY MONUMENTS WERE FOUND AND A 1" DIAMETER REBAR W/ GRANT COUNTY CAP WAS SET AS SHOWN.

DESCRIPTION OF CORNER AND WITNESS MONUMENTS, references and accessories used to perpetuate the original or re-established location of this corner.

SKETCH:



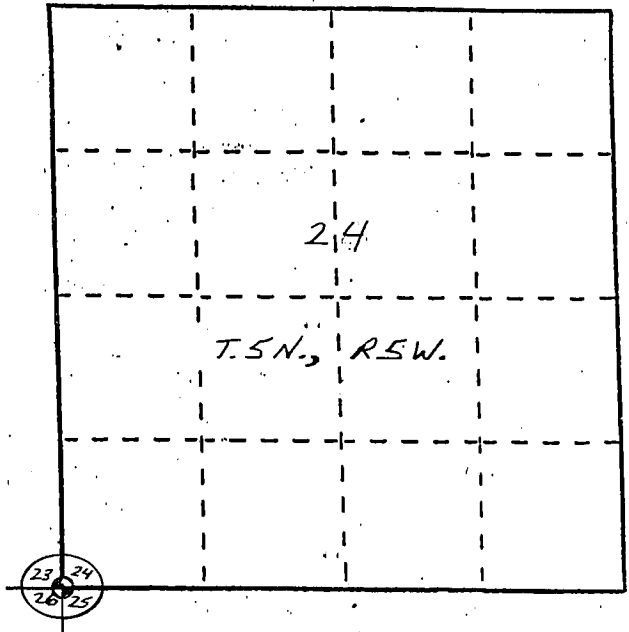
U. S. PUBLIC LAND SURVEY MONUMENT RECORD

INSTRUCTIONS: This record shall show the location of the corner and shall include all of the following nine elements (a through i).

- (a) Identify the corner by reference to the U.S. public land survey system.

○ = Corner monument restored.

The Southwest Corner of
Section 24, Town 5 North,
Range 5 West, Bloomington
Township, Grant County,
Wisconsin.

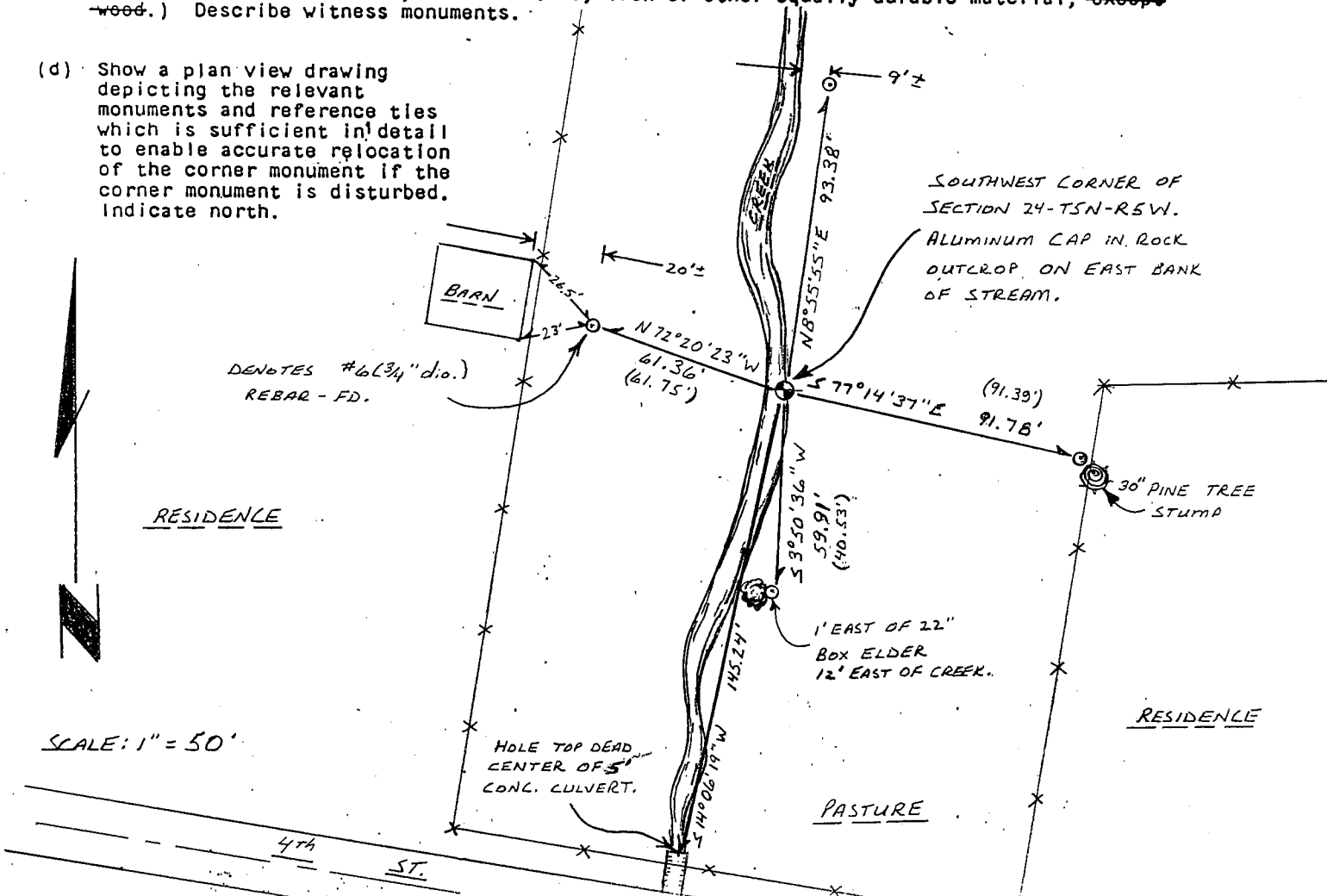


- (b) Describe any record evidence, monument evidence, occupational evidence, testimonial evidence or any other material evidence you considered, and whether the monument was found or placed.

A D.O.T. Aluminum cap set in a rock outcrop was found and accepted as shown on a previous tie sheet of record.

- (c) In the plan view drawing below, provide reference ties to at least 4 witness monuments, or, if the location is within a municipality, to at least 2 witness monuments. (Witness monuments shall be made of concrete, natural stone, iron or other equally durable material, ~~except~~ wood.) Describe witness monuments.

- (d) Show a plan view drawing depicting the relevant monuments and reference ties which is sufficient in detail to enable accurate relocation of the corner monument if the corner monument is disturbed. Indicate north.



SCALE: 1" = 50'

(e) Describe any material discrepancy between the location of the corner as restored or reestablished and the location of that corner as previously restored or reestablished by distance and direction. Show the discrepancy on the plan view drawing under (d), above. Show the distances between the corner as previously restored or reestablished and (1) the corner as restored or reestablished, and (2) to at least 2 of the witness monuments shown on the drawing in (d), above.

None.

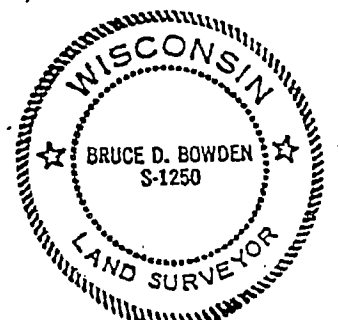
(f) Was the corner restored through acceptance of (1) an obliterated evidence location, or, (2) a found perpetuated location?

A found perpetuated location.

(g&h) Was the corner reestablished through lost corner proportionate methods? If so, show the method, including the directions and distances to other public land survey corners used as evidence or used for proportioning in determining the corner location?

No.

Affix Land Surveyor Seal



BRUCE D. BOWDEN

(i) I, BRUCE D. BOWDEN, (type or print name) certify that the corner location shown on this record was determined by me or under my direction and control and that this U.S. Public Land Survey Monument Record is correct and complete to the best of my knowledge and belief.

Bruce D. Bowden
Signature

Sept 21, 1998
Date

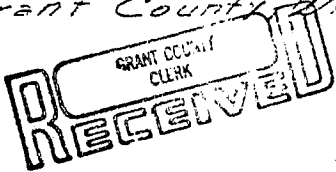
U. S. PUBLIC LAND SURVEY MONUMENT RECORD

INSTRUCTIONS : This record shall show the location of the corner and shall include all of the following nine elements (a through i).

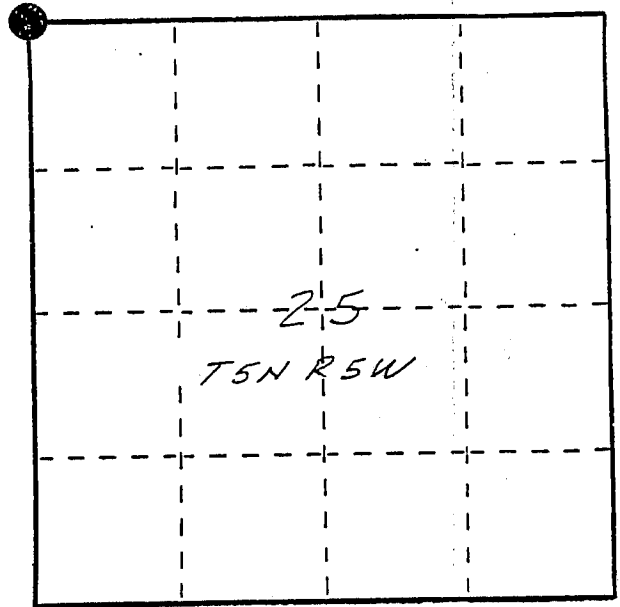
- (a) Identify the corner by reference to the U.S. public land survey system.

● = Corner monument restored.

NW corner section 25
T5N R5W of the
4th P.M.
Town of Bloomington
Grant County, Wisconsin



MAR 2 1988

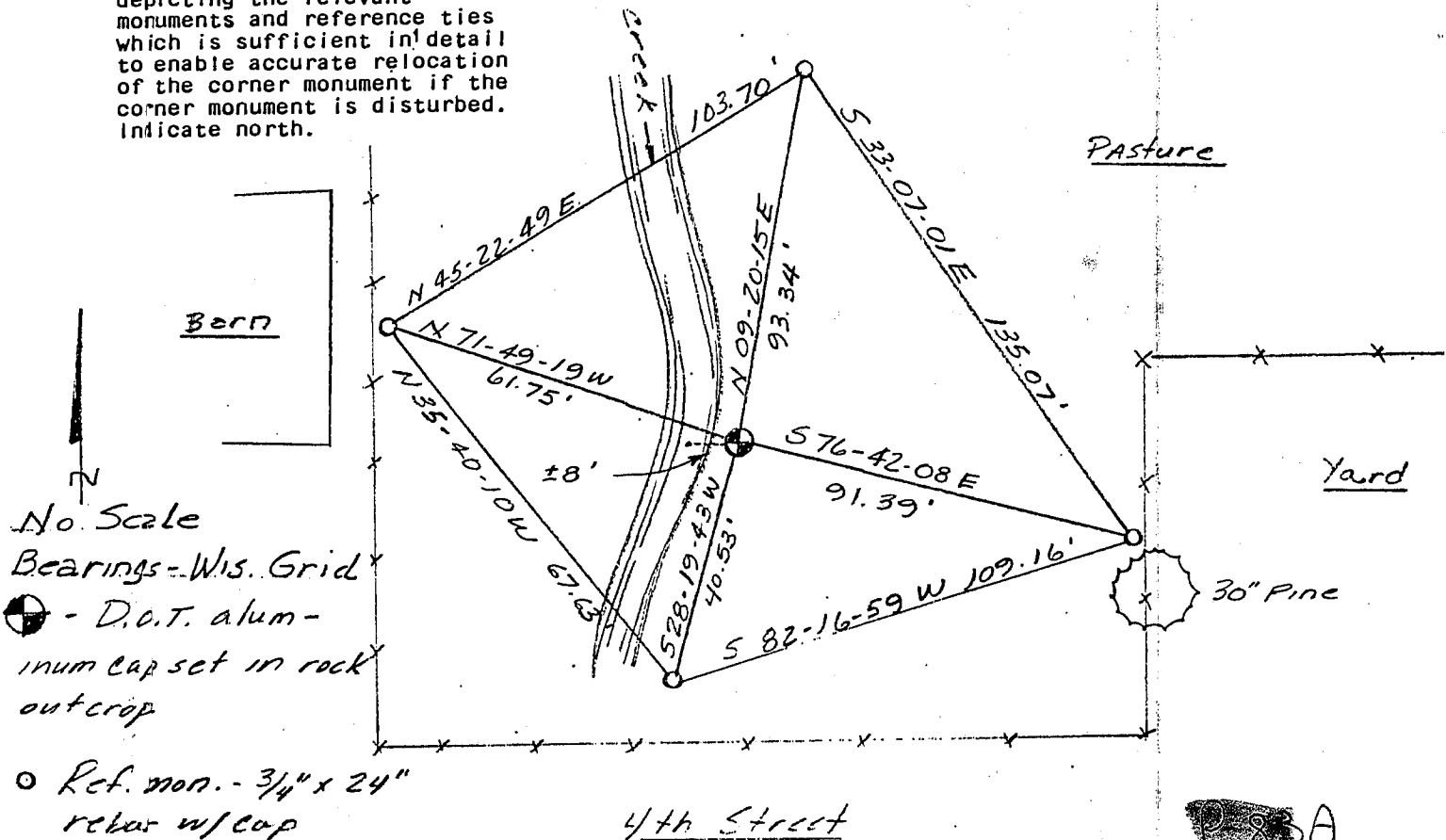


- (b) Describe any record evidence, monument evidence, occupational evidence, testimonial evidence or any other material evidence you considered, and whether the monument was found or placed.

Monument Set replaces a 5" x 5" x 30" concrete monument. This concrete monument had been accepted as the section corner. The monument is referred to in the Assessors Plat No. 1 to the Village of Bloomington and a 1977 Survey by Laurence E Schmit. The concrete monument was replaced because it was being eroded into the creek and it was unstable as it was.

- (c) In the plan view drawing below, provide reference ties to at least 4 witness monuments, or, if the location is within a municipality, to at least 2 witness monuments. (Witness monuments shall be made of concrete, natural stone, iron or other equally durable material, ~~except wood.~~) Describe witness monuments.

- (d) Show a plan view drawing depicting the relevant monuments and reference ties which is sufficient in detail to enable accurate relocation of the corner monument if the corner monument is disturbed. Indicate north.



No Scale
Bearings - Wis. Grid
● - D.O.T. aluminum cap set in rock outcrop
○ Ref. mon. - 3/4" x 24" rebar w/cap

BA

