

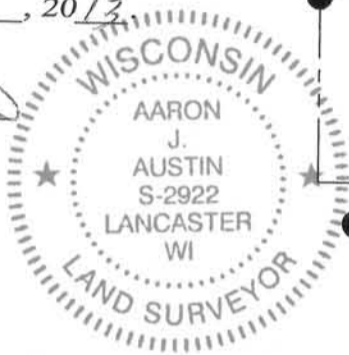
**U.S. PUBLIC LAND SURVEY MONUMENT RECORD - GRANT COUNTY, WI**  
 Section 20, Town 5 North Range 5 West, Town of Bloomington

**CERTIFICATE:**

I, Aaron J. Austin, do hereby certify that the corner location on this record was determined by me and/or under my direct supervision and that this U.S. Public Land Survey Monument Record is correct and complete to the best of my knowledge and belief.

Dated this 13 day of August, 2013.

Aaron J. Austin  
 Aaron J. Austin, S-2922



● = CORNER LOCATION

**HISTORY OF CORNER ESTABLISHMENT:**

Corner originally set in 1832 by Robert Clark.  
 Laurence Schmit set a railroad spike at this corner on a Survey dated 10-20-1978 filed in Book G, Page 263. No other record found for this corner

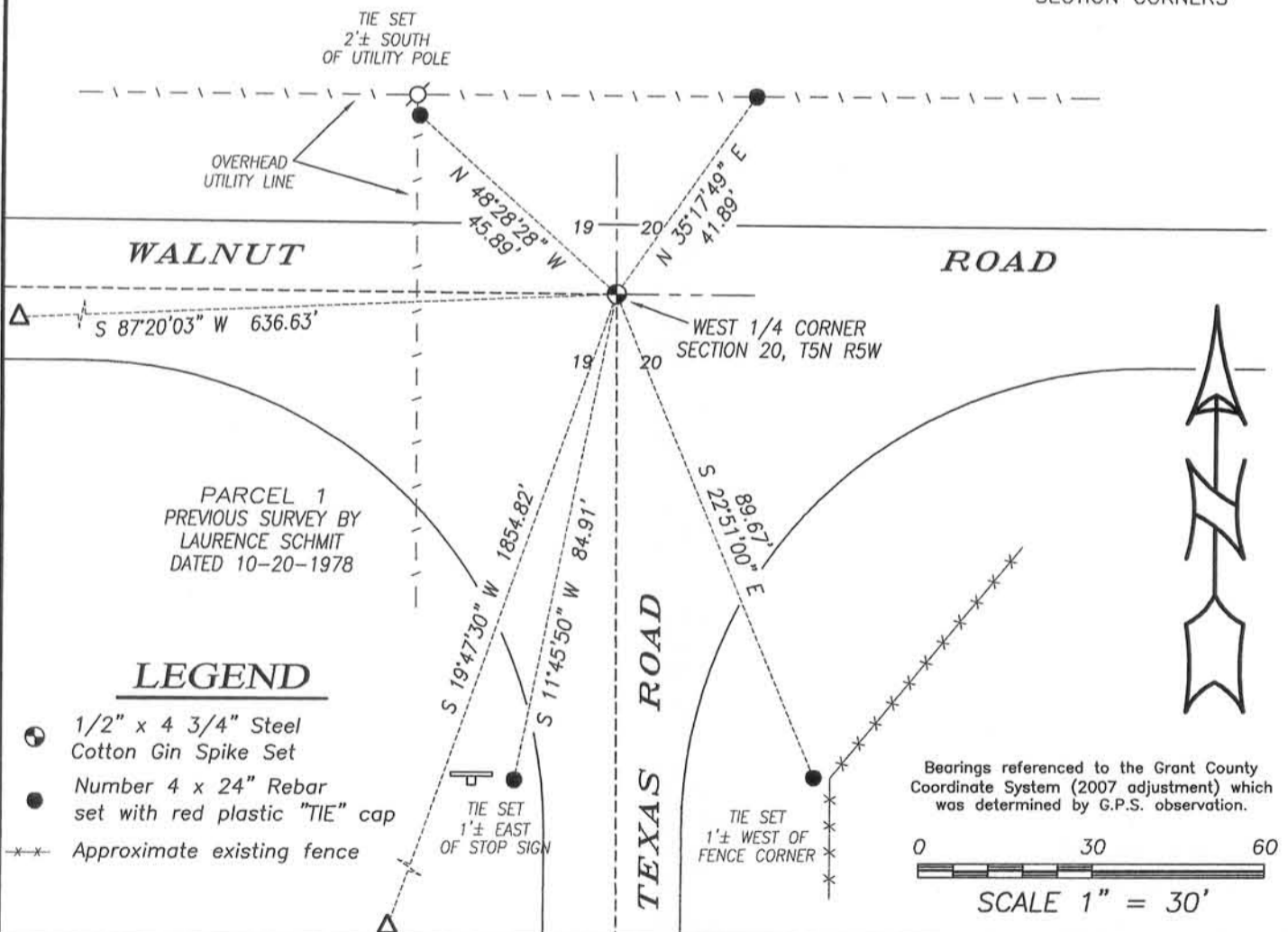
**DESCRIPTION OF CORNER EVIDENCE FOUND:**

I could not find the railroad spike set by Laurence Schmit. This corner falls in an existing roadway. I reset this corner based upon found iron pipes of the Schmit Survey and verified its location by G.P.S. observation.

**DESCRIPTION OF CORNER AND WITNESS MONUMENTS, references and accessories used to perpetuate the original or re-established location of this corner. Witnesses to corner location Shane Austin.**

**SKETCH:**

SEE SECTION SUMMARY FOR TIES TO ADJOINING SECTION CORNERS



4211 HWY 81 E, LANCASTER, WI 53813  
 PHONE: 608-723-6363 FAX: 608-723-6702

JOB NO. 13s069  
 G:\HMP\T5NR5W\20  
 H:\TIE\T5NR5W\75

FIELDBOOK: TDSR  
 DRAWN BY: AJ AUSTIN  
 CREW: SW AUSTIN