

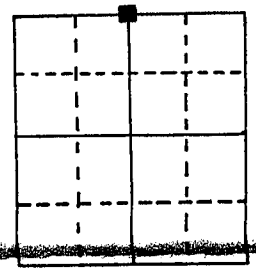
U.S. PUBLIC LAND SURVEY MONUMENT RECORD

Note: This form is intended and designed to fulfill all requirements of Wisconsin Administrative Code, Chapter A-E 5.02, U.S. Public Land Survey Monument Record (3) (a) (b) (c) (d) (e) (f) (g) (h) (i). An additional sheet may be added if necessary to conform with said requirements.

GRANT COUNTY
RECEIVED

(a) Corner location: Township 5 North
 Range 5 East/West
 Town/City/Village Bloomington
 County Grant

JUN 14 1989

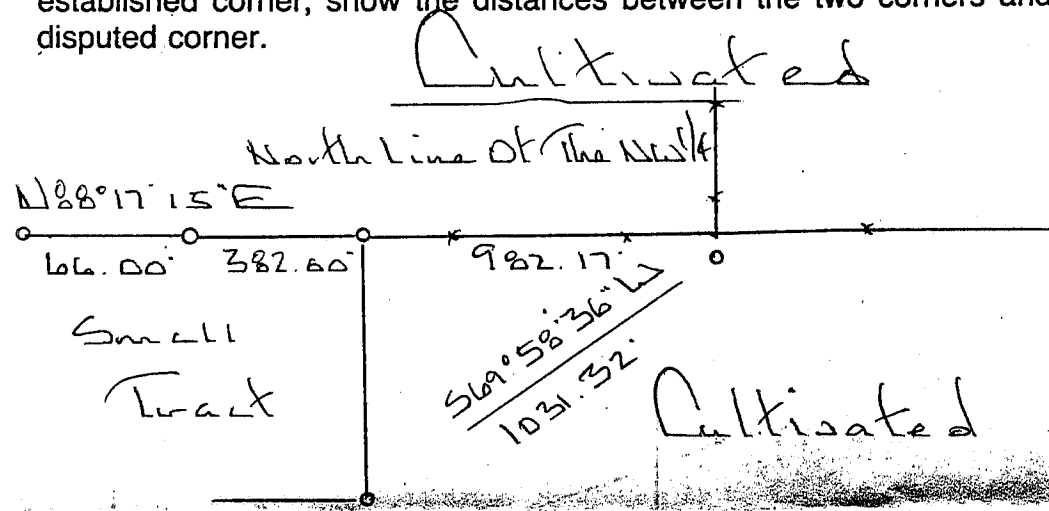


Section 30.

(b) (f) (g) (h) Description of monument found at this corner and if it was accepted, state all evidence (material, testimonial, occupational, plats, records, other monuments) used as a basis for accepting. If not accepted or if nothing was found, state evidence used as basis for establishing location. If reestablished through lost corner proportionate methods, indicate all monuments, distances and directions used to establish.

Schmit Shaws 2" Iron Shaft At
 Corner On Survey Dated 10/20/78
 I could not find shaft. I set a
 3/4" x 24" Solid Round Iron Rod At A
 Corner Corner N-E-W

(c) (d) (e) Plan view of corner with ties to at least 4 witness monuments. If in disagreement with previously established corner, show the distances between the two corners and also indicate the ties to the disputed corner.

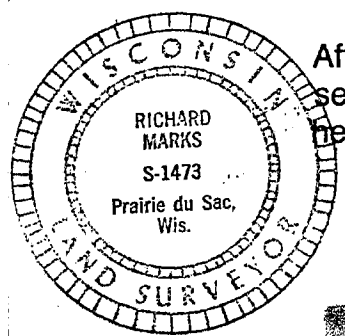


Corner And Witness Corners Are 3/4" x 24"
 Solid Round Iron Rods Set
 Bearings Are Assumed - Referenced To The North
 Line Of The Walk
 Redwood Marks

(i) I, _____
 (type or print name) certify that the corner location on this record was determined by me or under my direction and control and that this U.S. Public Land Survey Monument Record is correct and complete to the best of my knowledge and belief.

Richard Marks
 Signature

6/12/89
 Date



Affix seal here

P. 92A