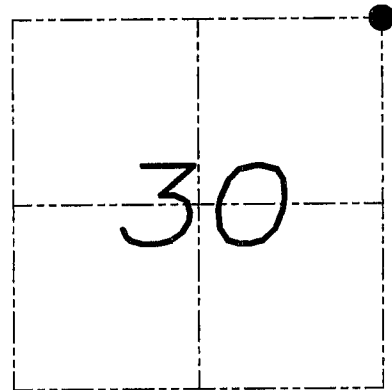


U.S. PUBLIC LAND SURVEY MONUMENT RECORD

Section 30, Town 5 North Range 5 West, Town of Bloomington, Grant County, Wisconsin

CERTIFICATE

I, Larry L. Austin, do hereby certify that the corner location on this record was determined by me and/or under my direct supervision and that this U.S. public land survey monument record is correct and complete to the best of my knowledge and belief.



● = CORNER LOCATION

Larry L. Austin
 Larry L. Austin, S-1903, date 025.08
 JUSTIN
 S-1903
 LANCASTER
 WI
 LAND SURVEYOR

HISTORY OF CORNER

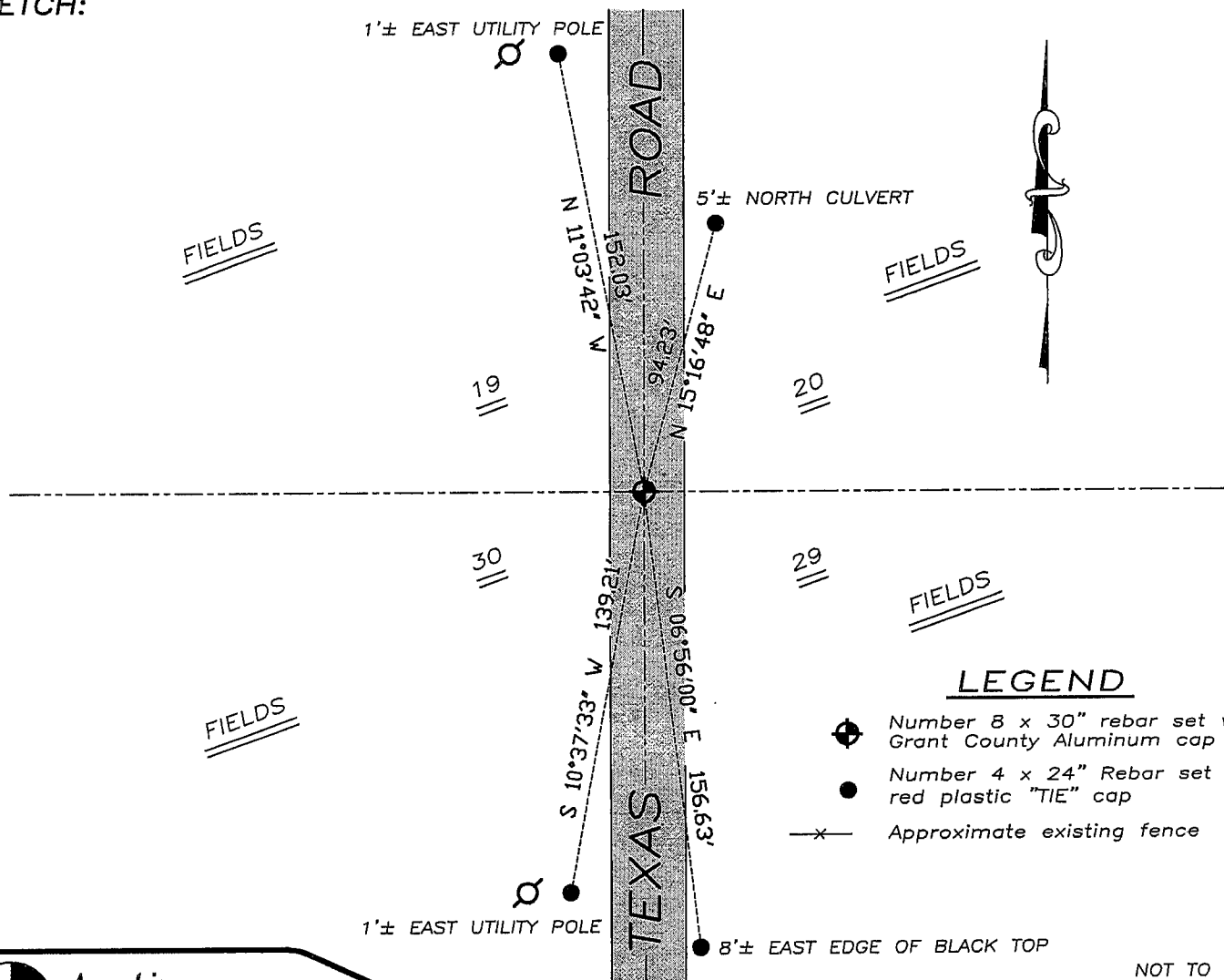
Corner was originally set in 1832 by Clark. No recent record of the corner was found.

CORNER EVIDENCE FOUND

I reset the corner based on proportioned measurements to all of the adjoining corners, occupied or monumented. Verified this location using EDM & GPS methods.

DESCRIPTION OF CORNER AND WITNESS MONUMENTS, references and accessories used to perpetuate the original or re-established location of this corner. Witnesses to monument location Bobby Sedgwick & Brad Digman & Brad Hazen

SKETCH:



NOT TO SCALE

Austin Engineering LLC

4211 HWY 81 E, LANCASTER, WI 53813
 PHONE 608-723-6363 FAX 608-723-6702

JOB NUMBER 08S055
 FIELDBOOK: TDSR, 2711
 G:\T5NR5W\29
 H:\TIE\T5NR5W\91

DRAWN BY: BL STANFLEY
 APPROVED: LL AUSTIN