

# U.S. PUBLIC LAND SURVEY MONUMENT RECORD - GRANT COUNTY, WI

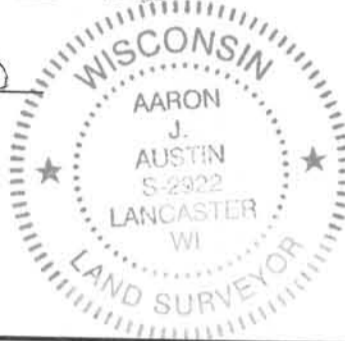
Section 20, Town 5 North Range 5 West, Town of Bloomington

**CERTIFICATE:**

I, Aaron J. Austin, do hereby certify that the corner location on this record was determined by me and/or under my direct supervision and that this U.S. Public Land Survey Monument Record is correct and complete to the best of my knowledge and belief.

Dated this 14 day of August, 20 13.

*Aaron J. Austin*  
 Aaron J. Austin, S-2922



● = CORNER LOCATION

HISTORY OF CORNER ESTABLISHMENT:

Corner originally set 1832 by Robert Clark. In 1978, Laurence Schmit set an iron pipe at this corner on a survey filed in Book G, Page 263. No other record was found for this corner.

DESCRIPTION OF CORNER EVIDENCE FOUND:

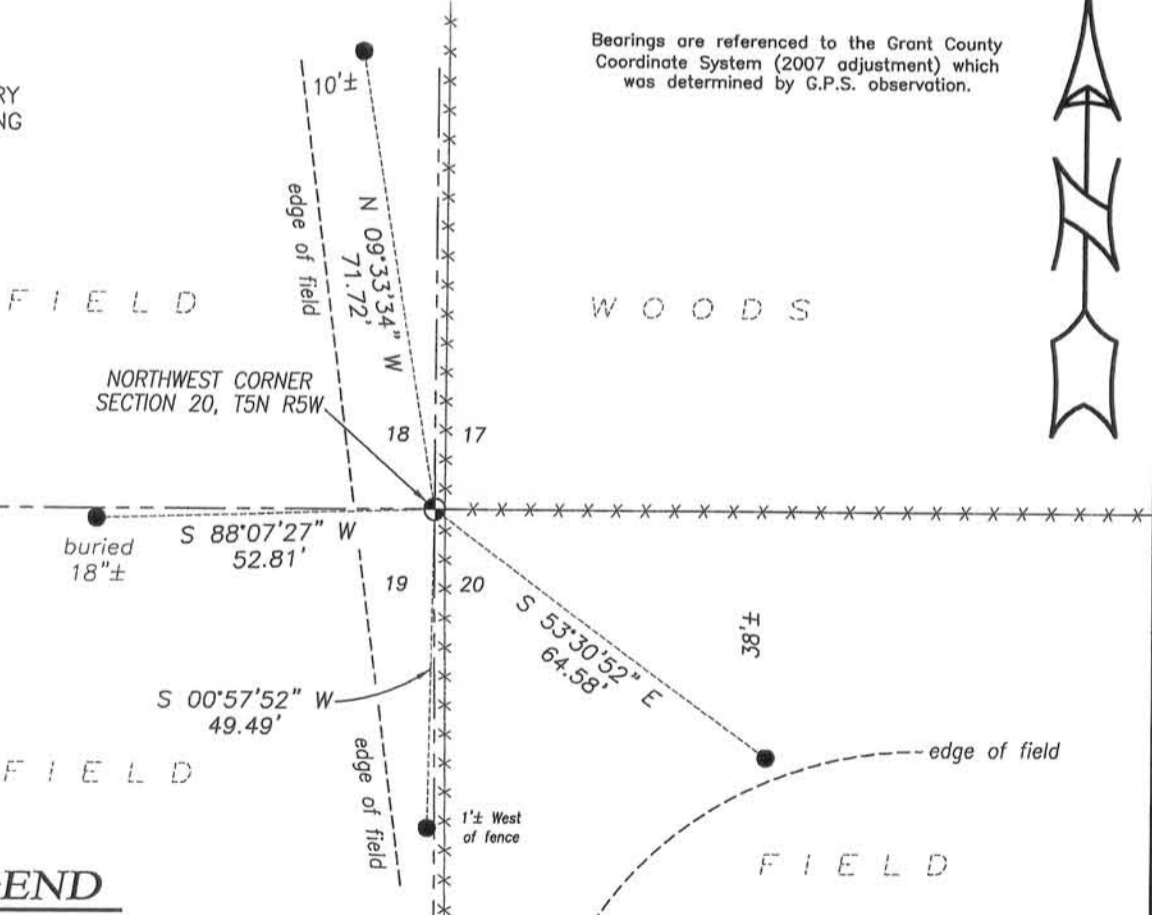
I found and accepted the iron pipe at an occupied fence corner. This pipe fit well with corners of the Laurence Schmit survey. I verified its location by G.P.S. observation.

DESCRIPTION OF CORNER AND WITNESS MONUMENTS, references and accessories used to perpetuate the original or re-established location of this corner. Witnesses to corner location Shane Austin.

**SKETCH:**

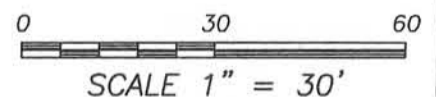
SEE SECTION SUMMARY FOR TIES TO ADJOINING SECTION CORNERS

Bearings are referenced to the Grant County Coordinate System (2007 adjustment) which was determined by G.P.S. observation.



**LEGEND**

- 1 1/2" Iron pipe found
- Number 4 x 24" Rebar set with red plastic "TIE" cap
- x-x- Approximate existing fence



**Austin Engineering LLC**  
 austinengineeringllc.com

4211 HWY 81 E, LANCASTER, WI 53813  
 PHONE: 608-723-6363 FAX: 608-723-6702

JOB NO: 13s069  
 G:\HMP\T5NR5W\20  
 H:\TIE\T5NR5W\71

FIELDBOOK: TDSR  
 DRAWN BY: AJ AUSTIN  
 CREW: SW AUSTIN