

U.S. PUBLIC LAND SURVEY MONUMENT RECORD - GRANT COUNTY, WI

Section 20, Town 5 North Range 5 West, Town of Bloomington

CERTIFICATE:

I, Aaron J. Austin, do hereby certify that the corner location on this record was determined by me and/or under my direct supervision and that this U.S. Public Land Survey Monument Record is correct and complete to the best of my knowledge and belief.

Dated this 14 day of August, 2013.

Aaron J. Austin
 Aaron J. Austin, S-2922



● = CORNER LOCATION

HISTORY OF CORNER ESTABLISHMENT:

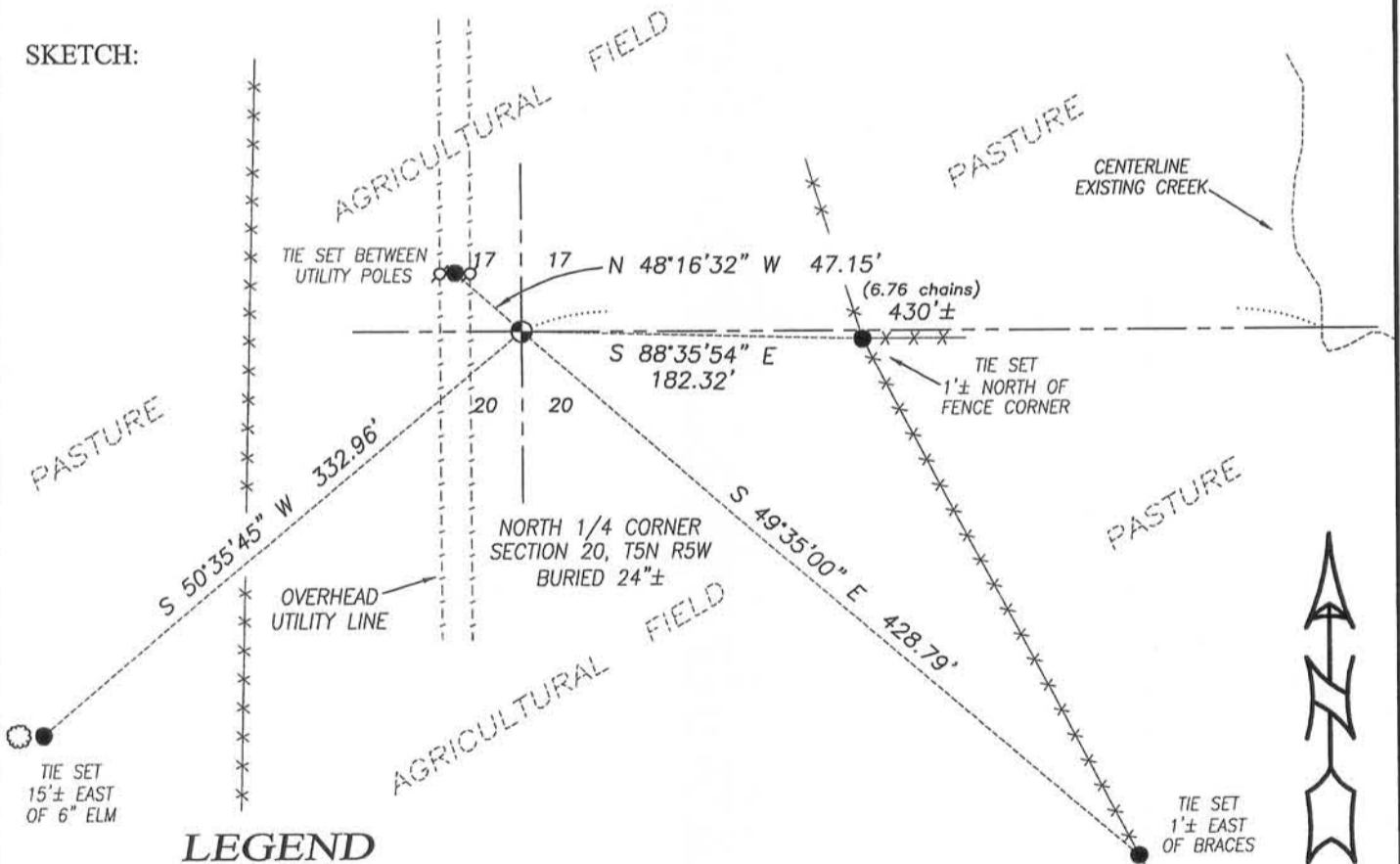
Corner originally set in 1832 by Robert Clark.
 No other record found for this corner.

DESCRIPTION OF CORNER EVIDENCE FOUND:

Corner location falls in agricultural field. I reset this corner online and midway between the Northwest corner and the Northeast corner of Section 20. This fits well with existing occupation at the 40 corners to the West and East of this location. It also fits well with the call to the spring brook located East of this corner. I verified this location by G.P.S. observations.

DESCRIPTION OF CORNER AND WITNESS MONUMENTS, references and accessories used to perpetuate the original or re-established location of this corner. Witnesses to corner location Shane Austin.

SKETCH:

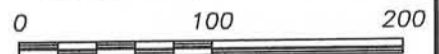


LEGEND

- No. 8 x 30" rebar set with Grant County Aluminum Cap
- Number 4 x 24" Rebar set with red plastic "TIE" cap
- x-x- Approximate existing fence

SEE SECTION SUMMARY FOR TIES TO ADJOINING SECTION CORNERS

Bearings referenced to the Grant County Coordinate System (2007 adjustment) which was determined by G.P.S. observation.



SCALE 1" = 100'



4211 HWY 81 E, LANCASTER, WI 53813
 PHONE: 608-723-6363 FAX: 608-723-6702

JOB NO. 13s069
 G:\HMP\T5NR5W\20
 H:\TIE\T5NR5W\70

FIELDBOOK: TDSR
 DRAWN BY: AJ AUSTIN
 CREW: SW AUSTIN