

GRANT
COUNTY

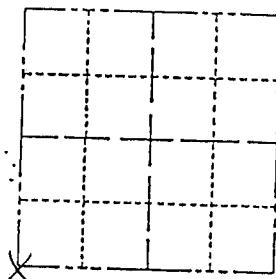
E. DEERINGTON

Survey Monument Record

TYPE OF MONUMENT: 3/4" REBAR
STATE PLANE COORDINATES: N _____
E _____

CORNER NO. _____
SECTION 15
TOWN 5N
RANGE 5W

ELEVATION — M.S.L. DATUM: _____
THETA ANGLE: _____
FIELD BOOK: 93-13 PAGE 49



BASIS FOR MONUMENT LOCATION

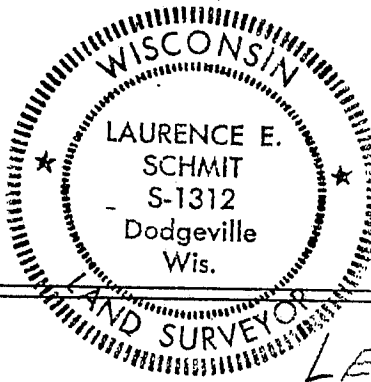
(Use reverse side if necessary)

Show info such as: History of corner, with reference to Vol. and pg, dates, surveyor; exact description of monument replaced; if location computed, by taped or EDM traverse; landowner remarks, etc.

SEAL:

LOCATION
(Indicated by 'X')

Set a 3/4" rebar at the record location of a RR spike set at the SW corner during the course of a survey by David A. Davis dated 2/2/1981.



CERTIFIED CORRECT:
Laurence E. Schmit
Registered Land Surveyor
DATE: 4-18-94

TIE SKETCH

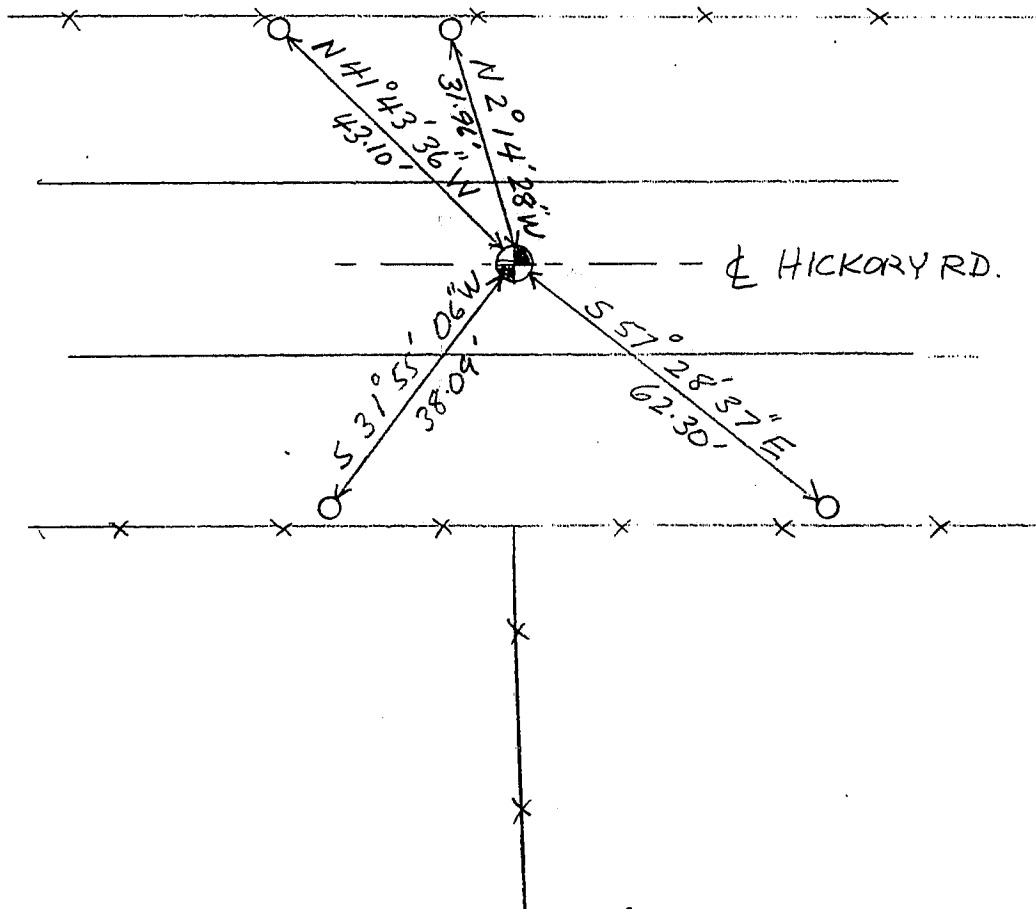
(Show at least four ties)

LEGEND

- x — FENCE
- 1/2" IRON PIPE SET
- 3/4" REBAR SET



NOT TO SCALE



67A