

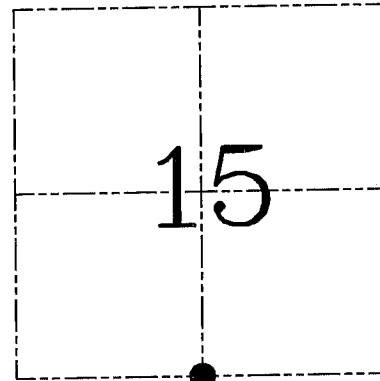
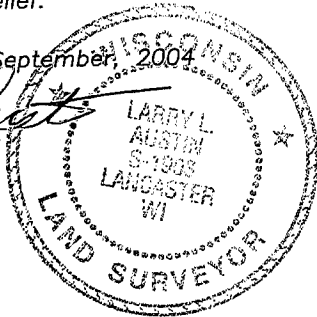
**U.S. PUBLIC LAND SURVEY MONUMENT RECORD – GRANT COUNTY, WI**  
**Section 15, Town 5 North Range 5 West, Town of Bloomington**

CERTIFICATE

I, Larry L. Austin, do hereby certify that the corner location on this record was determined by me and/or under my direct supervision and that this U.S. public land survey monument record is correct and complete to the best of my knowledge and belief.

Dated this 2nd day of September, 2004

*Larry L. Austin*  
 Larry L. Austin S-1903



● = CORNER LOCATION

HISTORY OF CORNER ESTABLISHMENT

Corner was originally set in 1832 by Clark. In 1981 Davis set a 1" iron pipe. In 1994 Schmit set witness monuments for the 1" iron pipe.

DESCRIPTION OF CORNER EVIDENCE FOUND

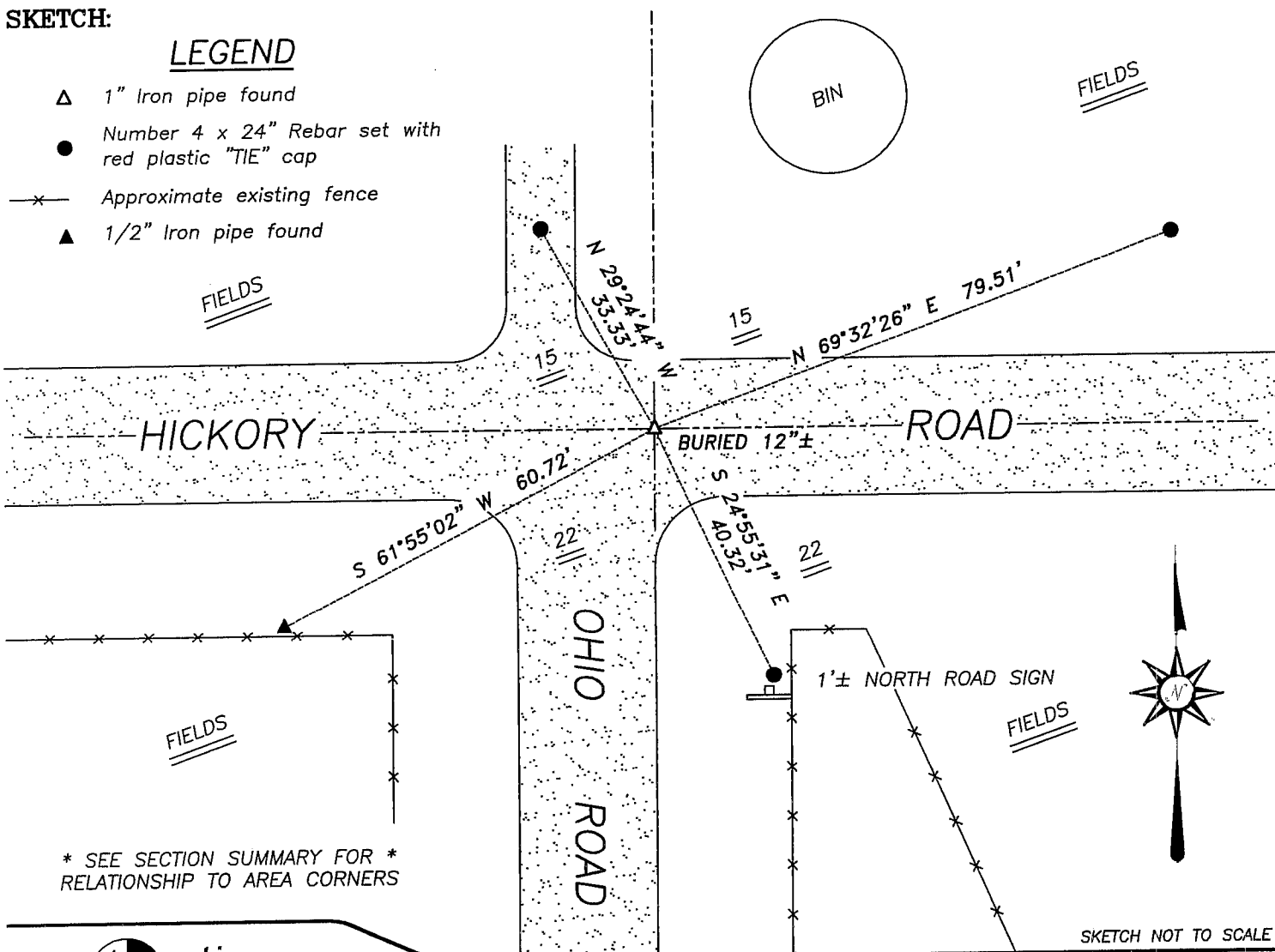
I found the 1" iron pipe  $12\frac{1}{2}$ "  $\pm$  below the surface of the road and accepted it's location. Only one remaining witness monument was found. I set three new witness monuments as shown below. Verified this location using EDM & GPS methods.

DESCRIPTION OF CORNER AND WITNESS MONUMENTS, references and accessories used to perpetuate the original or re-established location of this corner. Witnesses to corner location Bobby Sedgwick & Shane Austin & Brad Digman

**SKETCH:**

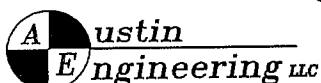
LEGEND

- △ 1" Iron pipe found
- Number 4 x 24" Rebar set with red plastic "TIE" cap
- x— Approximate existing fence
- ▲ 1/2" Iron pipe found



\* SEE SECTION SUMMARY FOR \*  
 RELATIONSHIP TO AREA CORNERS

SKETCH NOT TO SCALE



4211 HWY 81 E, LANCASTER, WI 53813  
 PHONE 608-723-6363 FAX 608-723-6702

JOB NUMBER 04S177  
 FIELDBOOK: TSDR, 2329  
 G:\T5NR5W\25  
 H:\TIE\T5NR5W\66

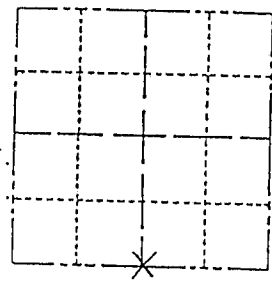
DRAWN BY: SW AUSTIN  
 APPROVED: LL AUSTIN

COUNT

Survey Monument Record

TYPE OF MONUMENT: 1" Iron Pipe  
 STATE PLANE COORDINATES: N \_\_\_\_\_  
 E \_\_\_\_\_  
 ELEVATION — M.S.L. DATUM: \_\_\_\_\_  
 THETA ANGLE: \_\_\_\_\_  
 FIELD BOOK: 93-13 PAGE 49

CORNER NO. \_\_\_\_\_  
 SECTION 15  
 TOWN 5N  
 RANGE 5W

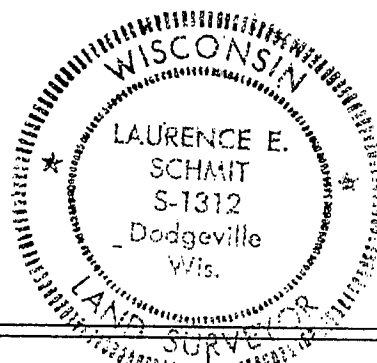


BASIS FOR MONUMENT LOCATION

(Use reverse side if necessary)  
 Show info such as: History of corner, with reference to Vol. and pg. dates, surveyor; exact description of monument replaced; if location computed, by taped or EDM traverse; landowner remarks, etc.

SEAL: \_\_\_\_\_  
 LOCATION (Indicated by 'X')

*Found and accepted a 1" Iron pipe as shown in a survey by David A. Davis dated 2/2/1981.*



CERTIFIED CORRECT:  
*Laurence E. Schmit*  
 Registered Land Surveyor  
 DATE: 4-18-91

TIE SKETCH

(Show at least four ties)

LEGEND

- FENCE
  - 1/2" IRON PIPE SET
  - 1" IRON PIPE FOUND
  - POWER POLE
- NOT TO SCALE

