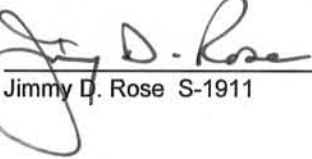


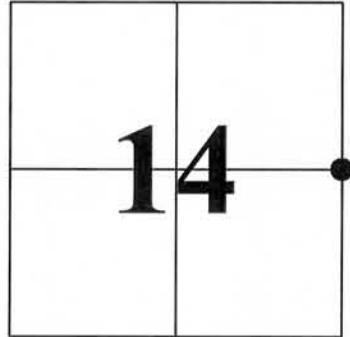
U.S. PUBLIC LAND SURVEY MONUMENT RECORD - GRANT COUNTY, WI
 Section 14, Town 5 North Range 5 West, Town of Bloomington East/Patch Grove

CERTIFICATE:

I, Jimmy D. Rose, do hereby certify that the corner location on this record was determined by me and/or under my direct supervision and that this U.S. Public Land Survey Monument Record is correct and complete to the best of my knowledge and belief.

Dated this 12th day of November, 2012


 Jimmy D. Rose S-1911



● = CORNER LOCATION

HISTORY OF CORNER ESTABLISHMENT: FOUND 1" DIA. REBAR PER PLAT OF SURVEY BY LARRY AUSTIN DATED APRIL 20, 1988. UNABLE TO FIND CORNER TIE ACCESSORIES.

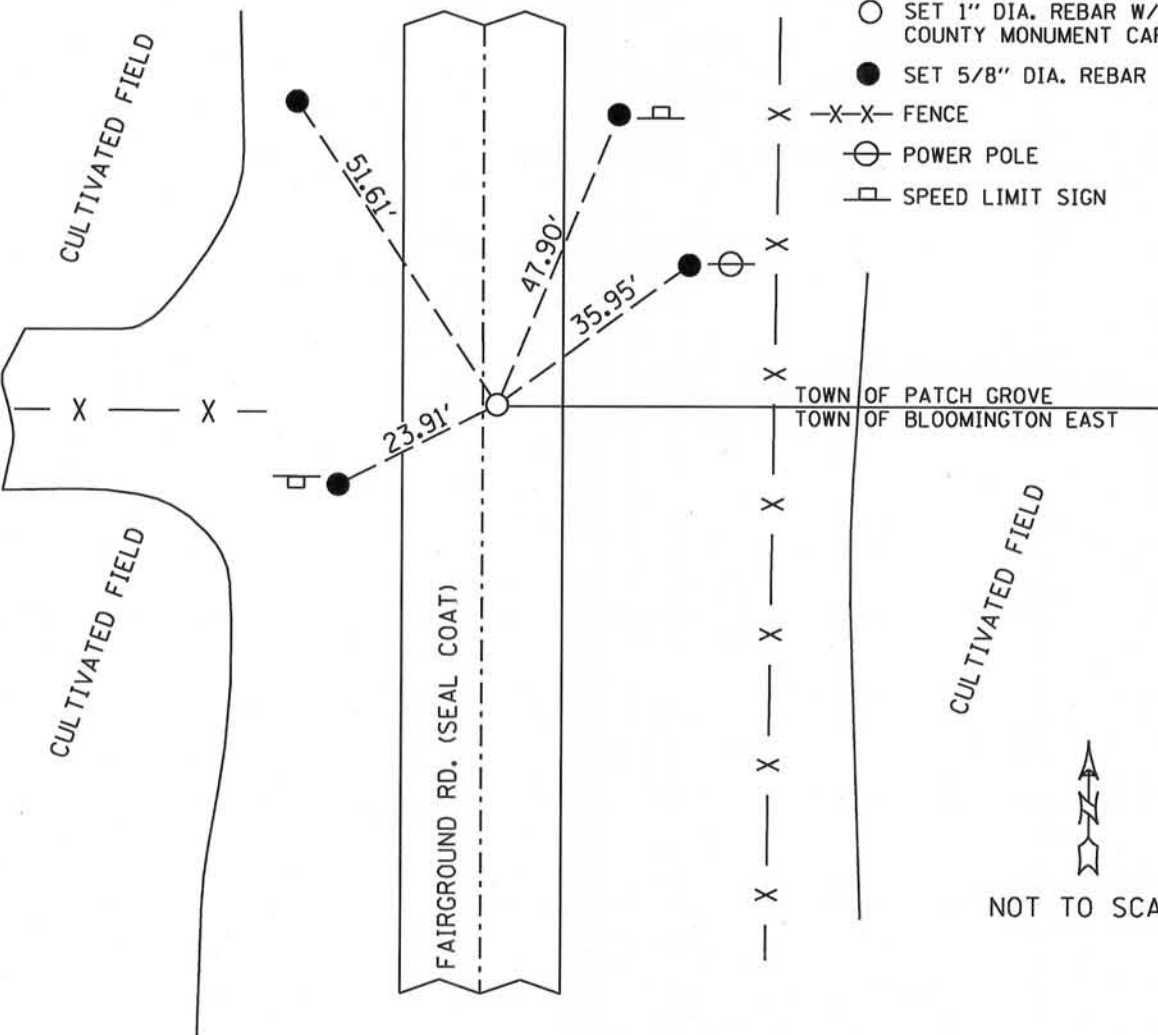
DESCRIPTION OF CORNER EVIDENCE FOUND: FOUND CORNER AND RE-ESTABLISHED ACCESSORY TIES.

DESCRIPTION OF CORNER AND WITNESS MONUMENTS, references and accessories used to perpetuate the original or re-established location of this corner.

SKETCH:

LEGEND

- SET 1" DIA. REBAR W/ GRANT COUNTY MONUMENT CAP
- SET 5/8" DIA. REBAR
- X-X- FENCE
- ⊙ POWER POLE
- ▭ SPEED LIMIT SIGN



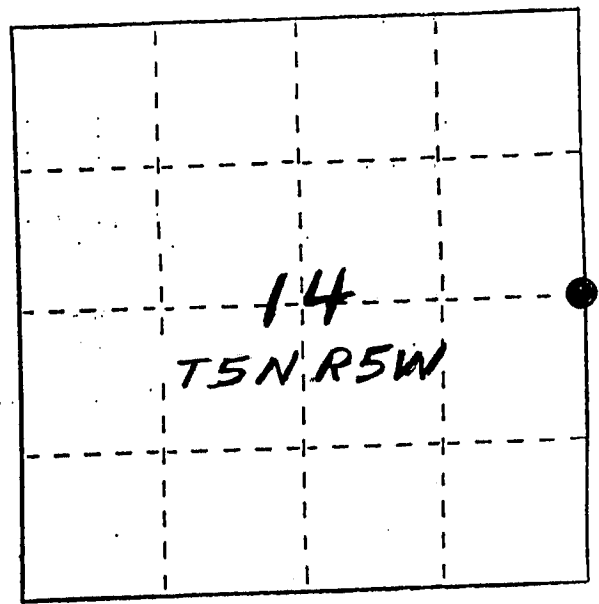
NOT TO SCALE

U. S. PUBLIC LAND SURVEY MONUMENT RECORD

INSTRUCTIONS: This record shall show the location of the corner and shall include all of the following nine elements (a through i).

- (a) Identify the corner by reference to the U.S. public land survey system.
- = Corner monument restored.

E¹/₄ CORNER, SEC 14
 T5N, R5W,
 GRANT CO., WISC.

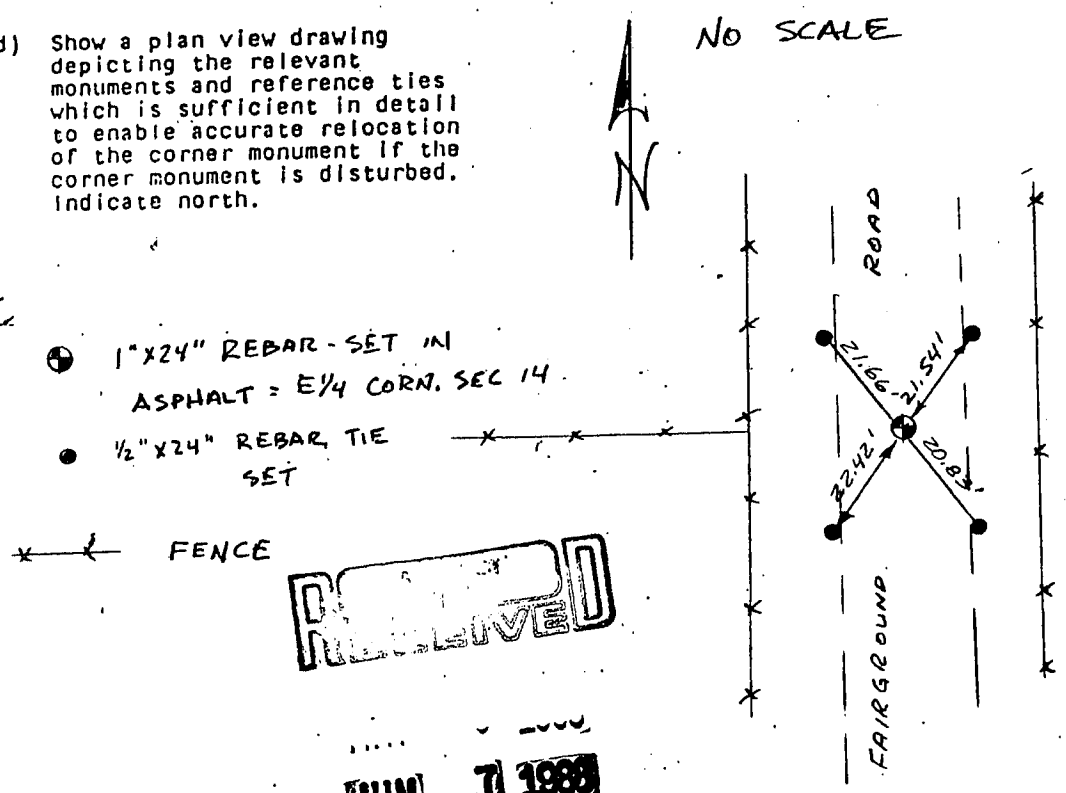


- (b) Describe any record evidence, monument evidence, occupational evidence, testimonial evidence or any other material evidence you considered, and whether the monument was found or placed.

NO RECORD OF CORNER RE-ESTABLISHMENT SINCE ORIG
 GOV'T SURVEYS; CORNER REESTABLISHED & LOCATION
 VERIFIED BY EDM TRAVERSE OF AREA

- (c) In the plan view drawing below, provide reference ties to at least 4 witness monuments, or, if the location is within a municipality, to at least 2 witness monuments. (Witness monuments shall be made of concrete, natural stone, iron or other equally durable material.) Describe witness monuments.

- (d) Show a plan view drawing depicting the relevant monuments and reference ties which is sufficient in detail to enable accurate relocation of the corner monument if the corner monument is disturbed. Indicate north.



- 1" X 24" REBAR - SET IN ASPHALT = E¹/₄ CORN. SEC 14.
- 1/2" X 24" REBAR TIE SET

x x FENCE

RECEIVED

JUN 7 1988

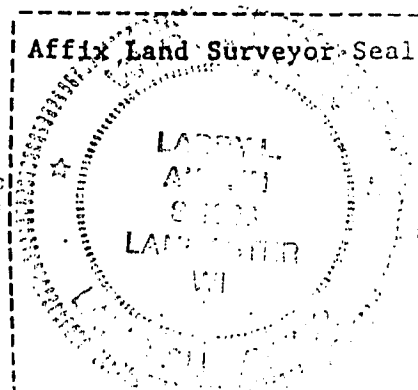
(e) Describe any material discrepancy between the location of the corner as restored or reestablished and the location of that corner as previously restored or reestablished by distance and direction. Show the discrepancy on the plan view drawing under (d), above. Show the distances between the corner as previously restored or reestablished and (1) the corner as restored or reestablished, and (2) to at least 2 of the witness monuments shown on the drawing in (d), above.

NONE

(f) Was the corner restored through acceptance of (1) an obliterated evidence location, or, (2) a found perpetuated location?

(1)

(g&h) Was the corner reestablished through lost corner proportionate methods? If so, show the method, including the directions and distances to other public land survey corners used as evidence or used for proportioning in determining the corner location?



(i) I, LARRY AUSTIN
(type or print name) certify that the corner location shown on this record was determined by me or under my direction and control and that this U.S. Public Land Survey Monument Record is correct and complete to the best of my knowledge and belief.

Larry R. Austin
Signature

4/27/88
Date