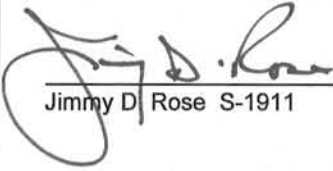


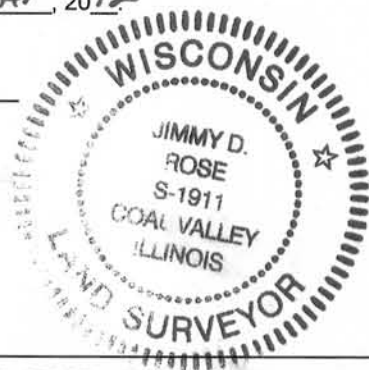
U.S. PUBLIC LAND SURVEY MONUMENT RECORD - GRANT COUNTY, WI
 Section 24, Town 5 North Range 5 West, Town of Bloomington East

CERTIFICATE:

I, Jimmy D. Rose, do hereby certify that the corner location on this record was determined by me and/or under my direct supervision and that this U.S. Public Land Survey Monument Record is correct and complete to the best of my knowledge and belief.

Dated this 11th day of December, 2012


 Jimmy D. Rose S-1911



● = CORNER LOCATION

HISTORY OF CORNER ESTABLISHMENT: NO RECORD OF CORNER ESTABLISHMENT PAST THE ORIGINAL GOVERNMENT SURVEYS WAS UNCOVERED.

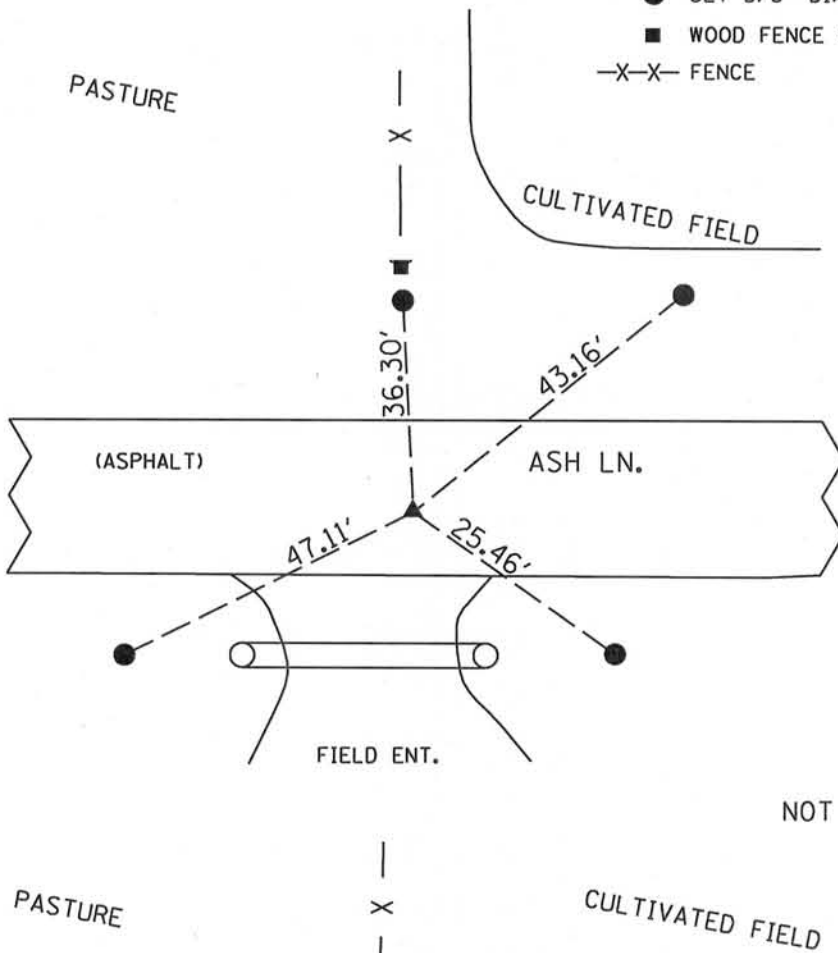
DESCRIPTION OF CORNER EVIDENCE FOUND: USING PROPORTIONAL MEASUREMENTS AND A TRAVERSE OF SECTION 24 THE CORNER WAS ESTABLISHED AND APPEARS TO AGREE WITH LONG STANDING OCCUPATION LINES.

DESCRIPTION OF CORNER AND WITNESS MONUMENTS, references and accessories used to perpetuate the original or re-established location of this corner.

SKETCH:

LEGEND

- ▲ SET 1" DIA. REBAR W/ GRANT COUNTY MONUMENT CAP
- SET 5/8" DIA. REBAR
- WOOD FENCE POST
- X-X- FENCE



NOT TO SCALE