

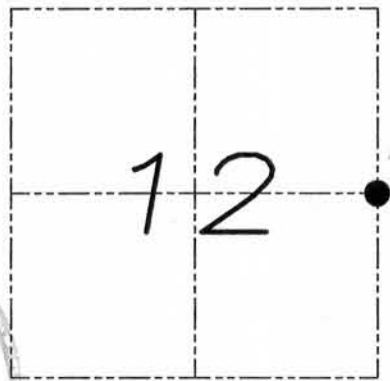
U.S. PUBLIC LAND SURVEY MONUMENT RECORD

Section 12, Town 5 North Range 5 West, Town of Patch Grove, Grant County, Wisconsin

CERTIFICATE

I, Larry L. Austin, do hereby certify that the corner location on this record was determined by me and/or under my direct supervision and that this U.S. public land survey monument record is correct and complete to the best of my knowledge and belief.

Larry L. Austin
Larry L. Austin, S-1903



● = CORNER LOCATION

HISTORY OF CORNER

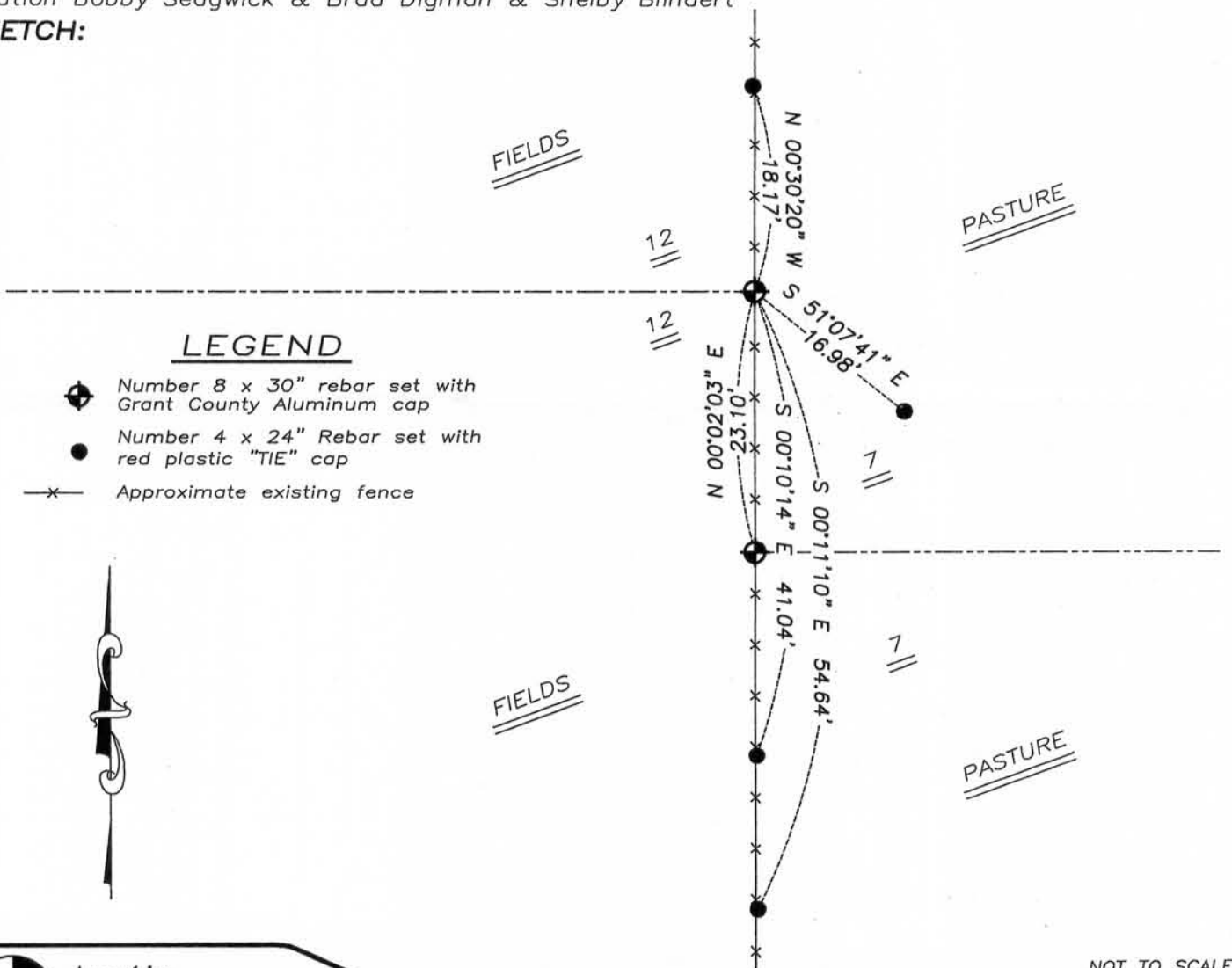
Corner was originally set in 1832 by Lucius Lyon.
No other record of the corner was found.

CORNER EVIDENCE FOUND

I set this corner proportionally along the Town Line in an existing North-South fence line. I verified its location by E.D.M. and G.P.S. methods.

DESCRIPTION OF CORNER AND WITNESS MONUMENTS, references and accessories used to perpetuate the original or re-established location of this corner. Witnesses to monument location Bobby Sedgwick & Brad Digman & Shelby Blindert

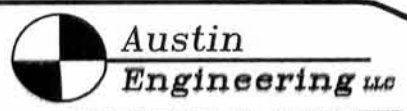
SKETCH:



LEGEND

- ◆ Number 8 x 30" rebar set with Grant County Aluminum cap
- Number 4 x 24" Rebar set with red plastic "TIE" cap
- x- Approximate existing fence

NOT TO SCALE



Austin Engineering LLC

4211 HWY 81 E, LANCASTER, WI 53813
PHONE 608-723-6363 FAX 608-723-6702

JOB NUMBER 09S140-CRUBEL
FIELDBOOK TDSR, 2011
G:\T5NR4W\28
H:\TIE\T5NR5W\40

DRAWN BY: SW AUSTIN
APPROVED: LL AUSTIN

40

NOV 04 2011

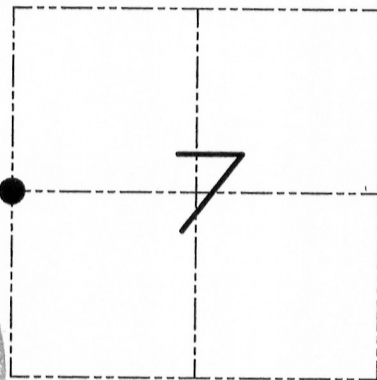
U.S. PUBLIC LAND SURVEY MONUMENT RECORD

Section 7, Town 5 North Range 4 West, Town of Little Grant, Grant County, Wisconsin

CERTIFICATE

I, Larry L. Austin, do hereby certify that the corner location on this record was determined by me and/or under my direct supervision and that this U.S. public land survey monument record is correct and complete to the best of my knowledge and belief.

Larry L. Austin
 Larry L. Austin, S-1903



● = CORNER LOCATION

HISTORY OF CORNER

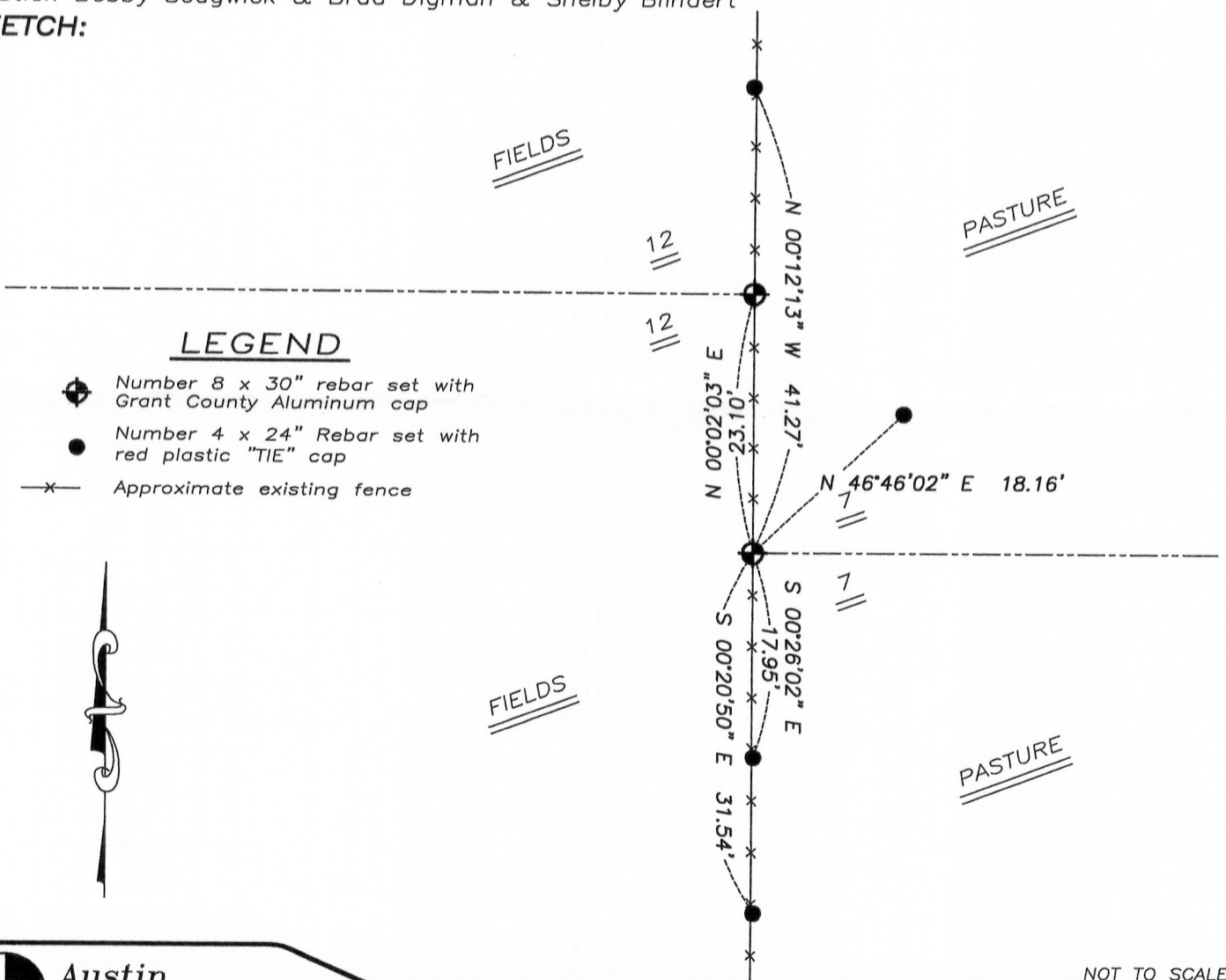
No other record of the corner was found.

CORNER EVIDENCE FOUND

I found and accepted an existing North-South fence for the Easting location. The Northing was established proportionally along the township line to the other occupied and monumented corners. I verified this location by G.P.S. and E.D.M. methods.

DESCRIPTION OF CORNER AND WITNESS MONUMENTS, references and accessories used to perpetuate the original or re-established location of this corner. Witnesses to monument location Bobby Sedgwick & Brad Digman & Shelby Blindert

SKETCH:



LEGEND

- ⊕ Number 8 x 30" rebar set with Grant County Aluminum cap
- Number 4 x 24" Rebar set with red plastic "TIE" cap
- - - - - Approximate existing fence

Austin Engineering LLC

4211 HWY 81 E, LANCASTER, WI 53813
 PHONE 608-723-6363 FAX 608-723-6702

JOB NUMBER 095110-CRUBEL
 FIELDBOOK TDSR, 2811
 G:\T5NR4W\28
 H:\TIE\T5NR4W\34

DRAWN BY: SW AUSTIN
 APPROVED: LL AUSTIN

NOT TO SCALE