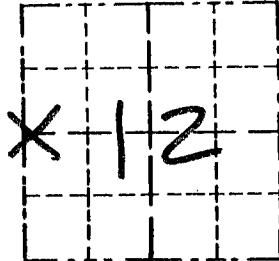


Survey Monument Record

TYPE OF MONUMENT RAILROAD SPIKE  
SET

CORNER NO. ~~12~~ 39  
SECTION 12  
TOWN 5N  
RANGE 5W

FIELD BOOK: 96-18  
PAGE (25)



LOCATION  
(Indicated by "X")

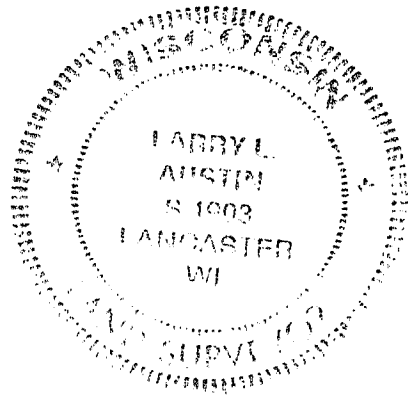
BASIS FOR MONUMENT LOCATION

(Use reverse side if necessary)

Show info such as: History of corner, with reference to Vol. and pg., dates, surveyor; exact description of monument replaced; if location computed, by taped or EDM traverse; landowner, remarks, etc.

CORNER SET IN 1832 BY ROBERT CLARK. NO RECORD OF CORNER FOUND SINCE ORIGINAL SURVEYS. CORNER WAS SET AT A FOUND NAIL WHICH WAS WEST OF ~~E~~ and ONLINE WITH FENCE TO EAST. VERIFIED ITS LOCATION USING EDM METHODS.

SEAL:



CERTIFIED CORRECT

*Larry L. Austin*  
Registered Land Surveyor

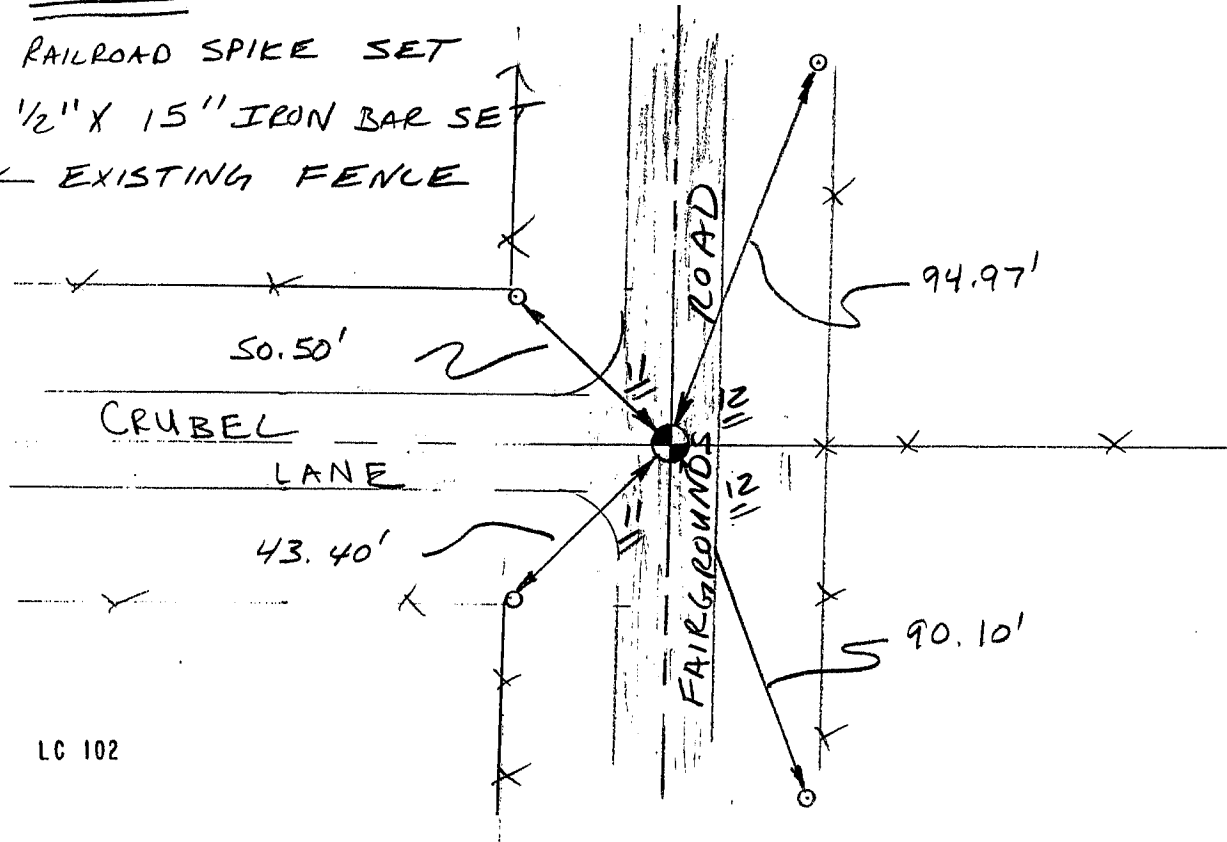
DATE: 1-27-97

TIE SKETCH

Show at least three (3) ties and monument

LEGEND

- ⊙ RAILROAD SPIKE SET
- 1/2" X 15" IRON BAR SET
- XX EXISTING FENCE



No SCALE