

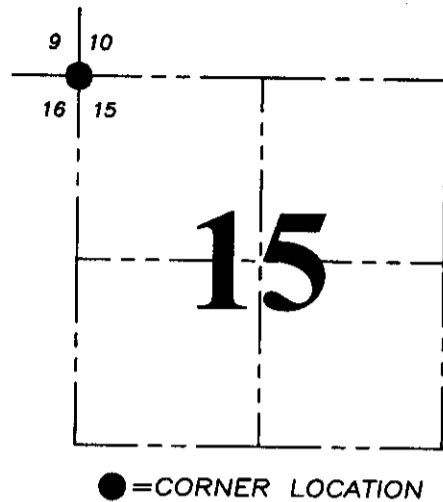
U.S. PUBLIC LAND SURVEY MONUMENT RECORD - GRANT COUNTY, WI
 Section 15, Town 5 North Range 5 West, Town of Bloomington

CERTIFICATE:

I, Aaron J. Austin, Wisconsin Professional Land Surveyor, do hereby certify that the corner location on this record was determined by me and/or under my direct supervision and that this U.S. Public Land Survey Monument Record is correct and complete to the best of my knowledge and belief.

Dated this 21st day of May, 2015

Aaron J. Austin
 Aaron J. Austin, S-2922
 LANCASTER WI
 LAND SURVEYOR



HISTORY OF CORNER ESTABLISHMENT:

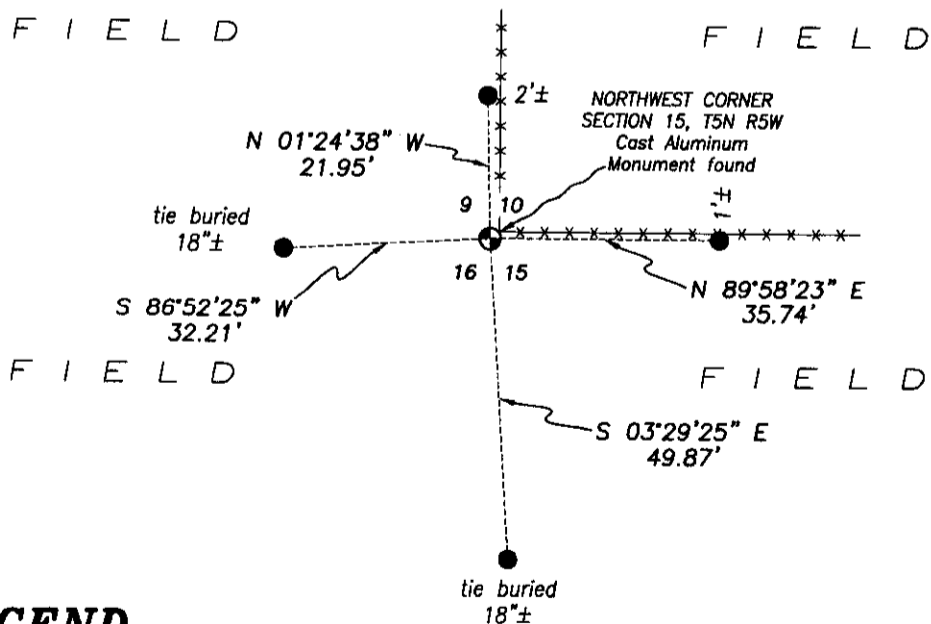
- 1832-Robert Clark set original corner.
- 1850-Geo Stuntz tied to the corner on a Survey in Book B, Page 240.
- 1981-Richard Talarczyk reset the corner on a Survey in Book H, Page 102 and prepared a U.S. Public Land Survey Control Station for the corner.
- 2004-Larry Austin tied to the corner on a Survey in Book 14, Page 81.
- 2004-Larry Austin tied to the corner on a Survey in Book 15, Page 36.
- 2006-Larry Austin tied to the corner on a Survey in Book 19, Page 84.
- 2007-Larry Austin tied to the corner on a Survey in Book 20, Page 66.
- 2012-Chris Higgins tied to the corner on a Survey in Book 32, Page 63.

DESCRIPTION OF CORNER EVIDENCE FOUND:

No witness corners were found for the corner as established by Richard Talarczyk. Chris Higgins noted on his Survey filed in Book 32, Page 63 that he found the monument disturbed and reset it according to the tie sheet. I found the monument in place and set 4 new witness corners as shown hereon. This location was verified by E.D.M. and G.P.S. methods.

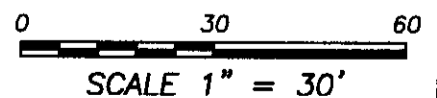
DESCRIPTION OF CORNER AND WITNESS MONUMENTS, references and accessories used to perpetuate the original or re-established location of this corner. Witness to corner location Shane Austin.

SKETCH:



LEGEND

- ⊙ Section Corner—as designated
- 1/2" x 12" rebar set
- x-x- Approximate fence



Austin Engineering LLC
 austinengineeringllc.com

4211 HWY 81 E, LANCASTER, WI 53813
 PHONE: 608-723-6363 FAX: 608-723-6702

JOB NO: 15s085
 H:\CRD\15s085
 H:\TIE\T5NR5W\47

FIELDBOOK: TDSR
 DRAWN BY: AJ AUSTIN
 CREW: SW AUSTIN

RECORD OF U.S. PUBLIC LAND SURVEY CONTROL STATION

QUARTER SECTION CORNER $\frac{9}{16} | \frac{10}{15}$ TOWNSHIP 5 N, RANGE 5W, GRANT COUNTY, WISCONSIN

GEODETIC SURVEY BY: _____

STATE PLANE COORDINATES OF:
NORTH _____
EAST _____

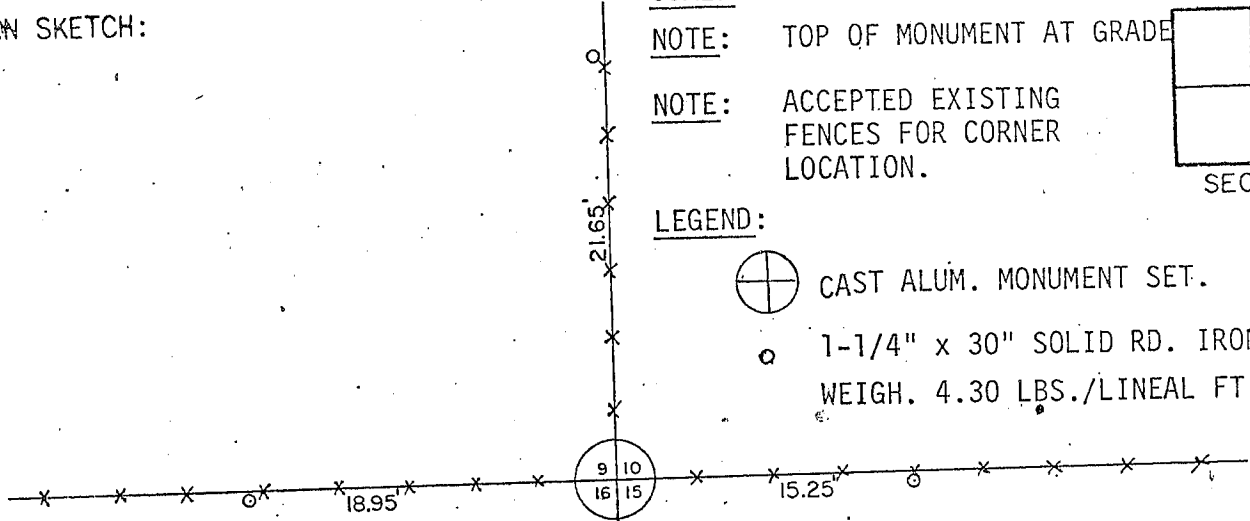
ELEVATION OF STATION: _____ THETA ANGLE: _____

HORIZONTAL DATUM: WISCONSIN STATE PLANE COORDINATE SYSTEM, SOUTH ZONE

VERTICAL DATUM: MEAN SEA LEVEL, 1929 ADJUSTMENT

HORIZONTAL & VERTICAL CONTROL ACCURACY: SECOND ORDER

LOCATION SKETCH:



SCALE: 1" = 10'

NOTE: TOP OF MONUMENT AT GRADE

NOTE: ACCEPTED EXISTING FENCES FOR CORNER LOCATION.

LEGEND:



CAST ALUM. MONUMENT SET.



1-1/4" x 30" SOLID RD. IRON ROD SET,
WEIGH. 4.30 LBS./LINEAL FT.

SURVEYOR'S AFFIDAVIT:

STATE OF WISCONSIN)
GREEN COUNTY) SS

I HEREBY CERTIFY THAT I, RICHARD D. TALARCZYK, HAVE COMPLIED WITH THE WISCONSIN STATUTES, STATUTES OF THE UNITED STATES, AND THE RULES AND REGULATIONS OF THE SECRETARY OF THE INTERIOR IN THE LOCATION OF THE CORNER SHOWN BELOW.

DATE OF SURVEY: 10-14-81 to 12-19-81.

Richard D. Talarczyk
Richard D. Talarczyk



DEC 30 1981

2-47