

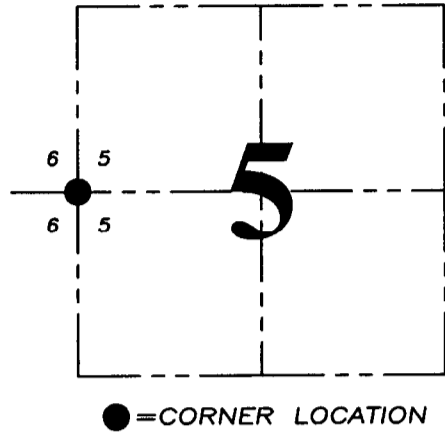
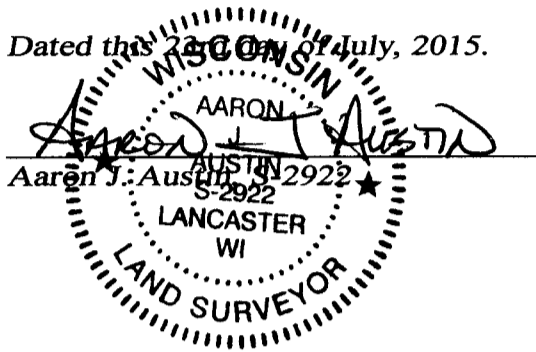
**U.S. PUBLIC LAND SURVEY MONUMENT RECORD - GRANT COUNTY, WI**

Section 5, Town 5 North Range 4 West, Town of Little Grant

**CERTIFICATE:**

I, Aaron J. Austin, Wisconsin Professional Land Surveyor, do hereby certify that the corner location on this record was determined by me and/or under my direct supervision and that this U.S. Public Land Survey Monument Record is correct and complete to the best of my knowledge and belief.

Dated this 23<sup>rd</sup> day of July, 2015.



**HISTORY OF CORNER ESTABLISHMENT:**

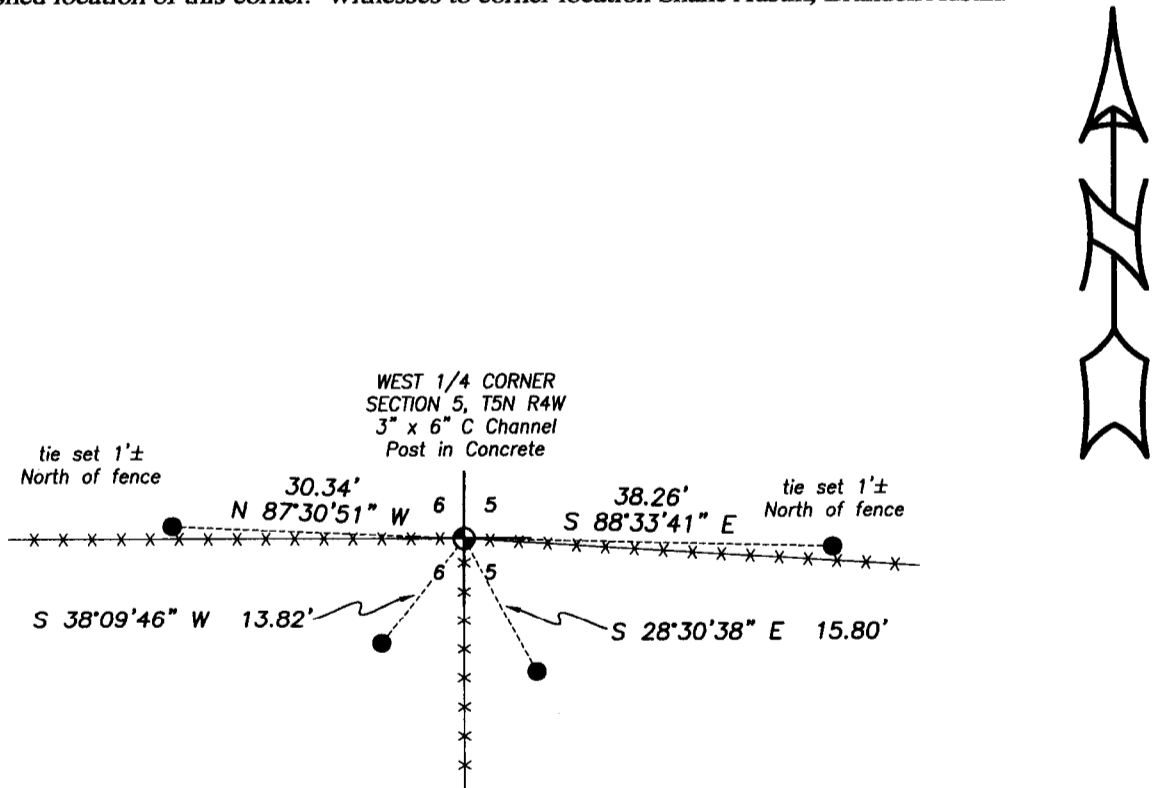
1833-Harvey Parke set original corner.  
 1976-David Krohn tied to the corner on a Survey filed in Book G, Page 232.  
 No other record found for this corner.

**DESCRIPTION OF CORNER EVIDENCE FOUND:**

David Krohn accepted a Steel Beam corner post on his survey filed in Book G, Page 232. I found and accepted a 3" x 6" Steel "C" Channel corner post in concrete at the existing fence intersection. I set 4 witness corners and verified this location with E.D.M. and G.P.S. methods.

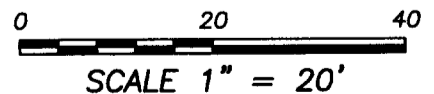
**DESCRIPTION OF CORNER AND WITNESS MONUMENTS, references and accessories used to perpetuate the original or re-established location of this corner. Witnesses to corner location Shane Austin, Brandon Austin.**

**SKETCH:**



**LEGEND**

- ⊕ Section Corner - as designated
- 1/2" x 12" Rebar set with red plastic "TIE" cap
- x-x- Existing fence



**Austin Engineering LLC**  
 austinengineeringllc.com

4211 HWY 81 E, LANCASTER, WI 53813  
 PHONE: 608-723-6363 FAX: 608-723-6702

JOB NO: 15s126  
 H:\CRD\15s126  
 H:\TIE\T5NR4W\15

FIELDBOOK: TDSR  
 DRAWN BY: AJ AUSTIN  
 CREW: SW AUSTIN, BL AUSTIN

**U.S. PUBLIC LAND SURVEY MONUMENT RECORD – GRANT COUNTY, WI**

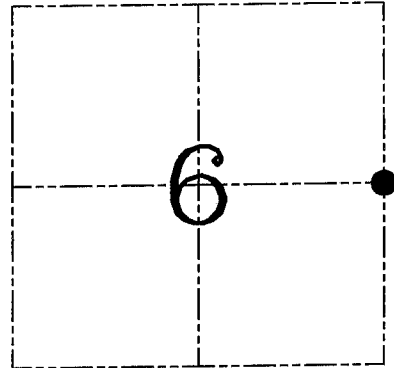
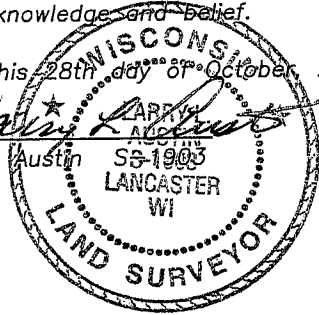
**Section 6, Town 5 North Range 5 West, Town of Patch Grove**

CERTIFICATE

I, Larry L. Austin, do hereby certify that the corner location on this record was determined by me and/or under my direct supervision and that this U.S. public land survey monument record is correct and complete to the best of my knowledge and belief.

Dated this 28th day of October, 2005

Larry L. Austin



● = CORNER LOCATION

HISTORY OF CORNER ESTABLISHMENT

Corner was originally set in 1832 by Clark. In 1894 & 1899 Sampson measured to the corner. No other record of the corner was found.

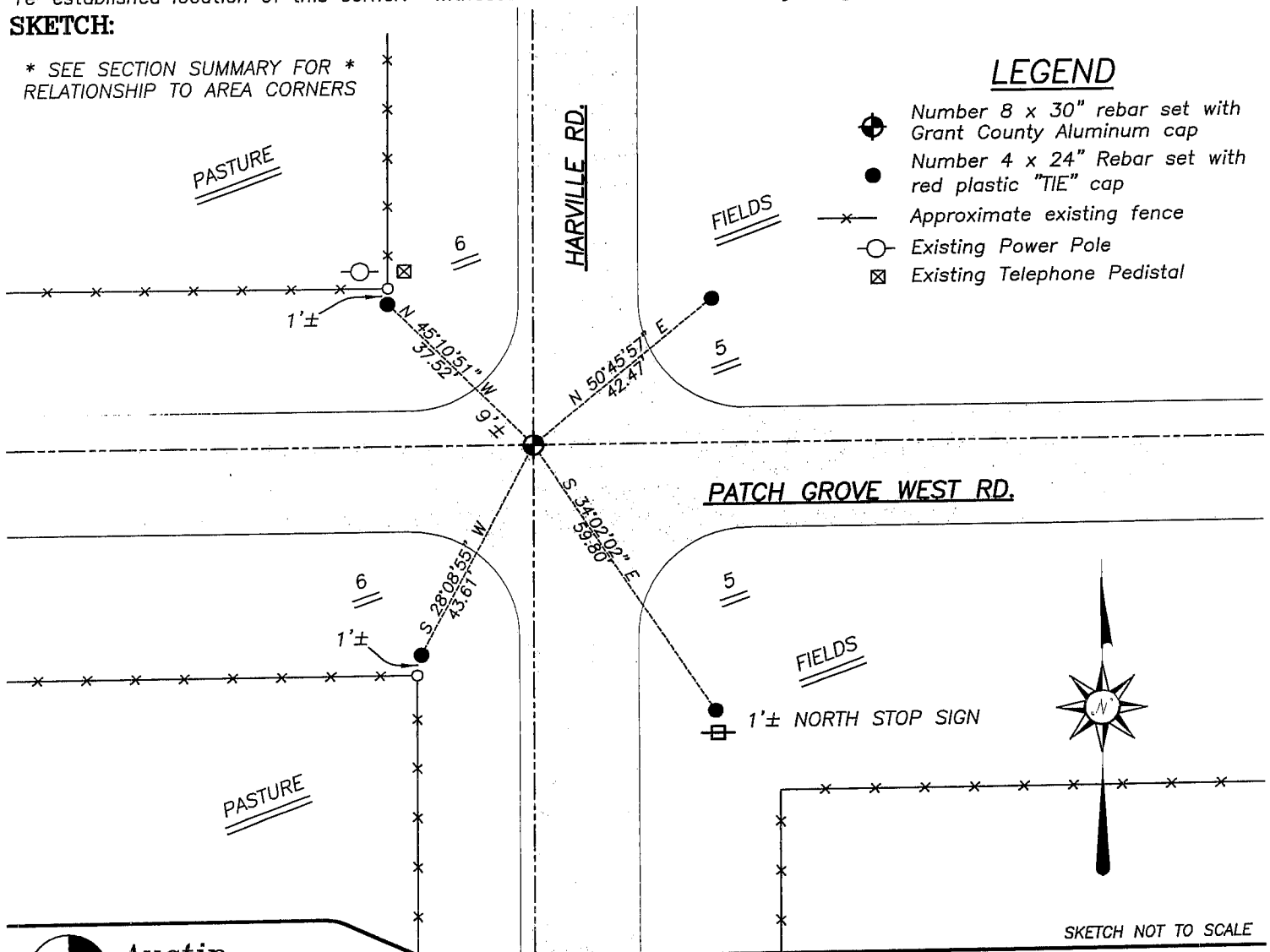
DESCRIPTION OF CORNER EVIDENCE FOUND

I reset the corner proportionately to Sampson's survey and on-line with occupational evidence projected from the South. Verified this location using EDM & GPS methods.

DESCRIPTION OF CORNER AND WITNESS MONUMENTS, references and accessories used to perpetuate the original or re-established location of this corner. Witnesses to corner location Bobby Sedgwick & Brad Digman & Shane Austin

**SKETCH:**

\* SEE SECTION SUMMARY FOR \*  
RELATIONSHIP TO AREA CORNERS



LEGEND

- Number 8 x 30" rebar set with Grant County Aluminum cap
- Number 4 x 24" Rebar set with red plastic "TIE" cap
- x— Approximate existing fence
- Existing Power Pole
- ⊠ Existing Telephone Pedestal



SKETCH NOT TO SCALE



**Austin Engineering LLC**

4211 HWY 81 E, LANCASTER, WI 53813  
PHONE 608-723-6363 FAX 608-723-6702

JOB NUMBER 05S168  
FIELDBOOK: TDSR, 2516  
G:\T5NR6W\01  
H:\TIE\T5NR5W\15

DRAWN BY: BJ HAZEN  
APPROVED: LL AUSTIN