

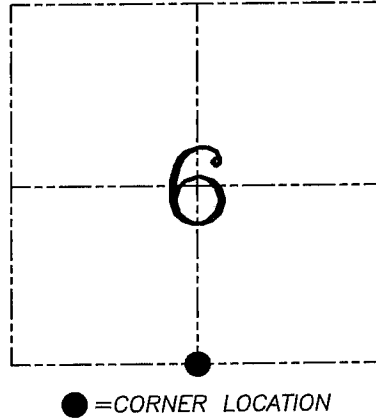
U.S. PUBLIC LAND SURVEY MONUMENT RECORD – GRANT COUNTY, WI
Section 6, Town 5 North Range 5 West, Town of Patch Grove

CERTIFICATE

I, Larry L. Austin, do hereby certify that the corner location on this record was determined by me and/or under my direct supervision and that this U.S. public land survey monument record is correct and complete to the best of my knowledge and belief.

Dated this 23rd day of June, 2005

Larry L. Austin
 Larry L. Austin
 Wisconsin
 LAND SURVEYOR
 No. 1903
 LANCASTER
 WI



HISTORY OF CORNER ESTABLISHMENT

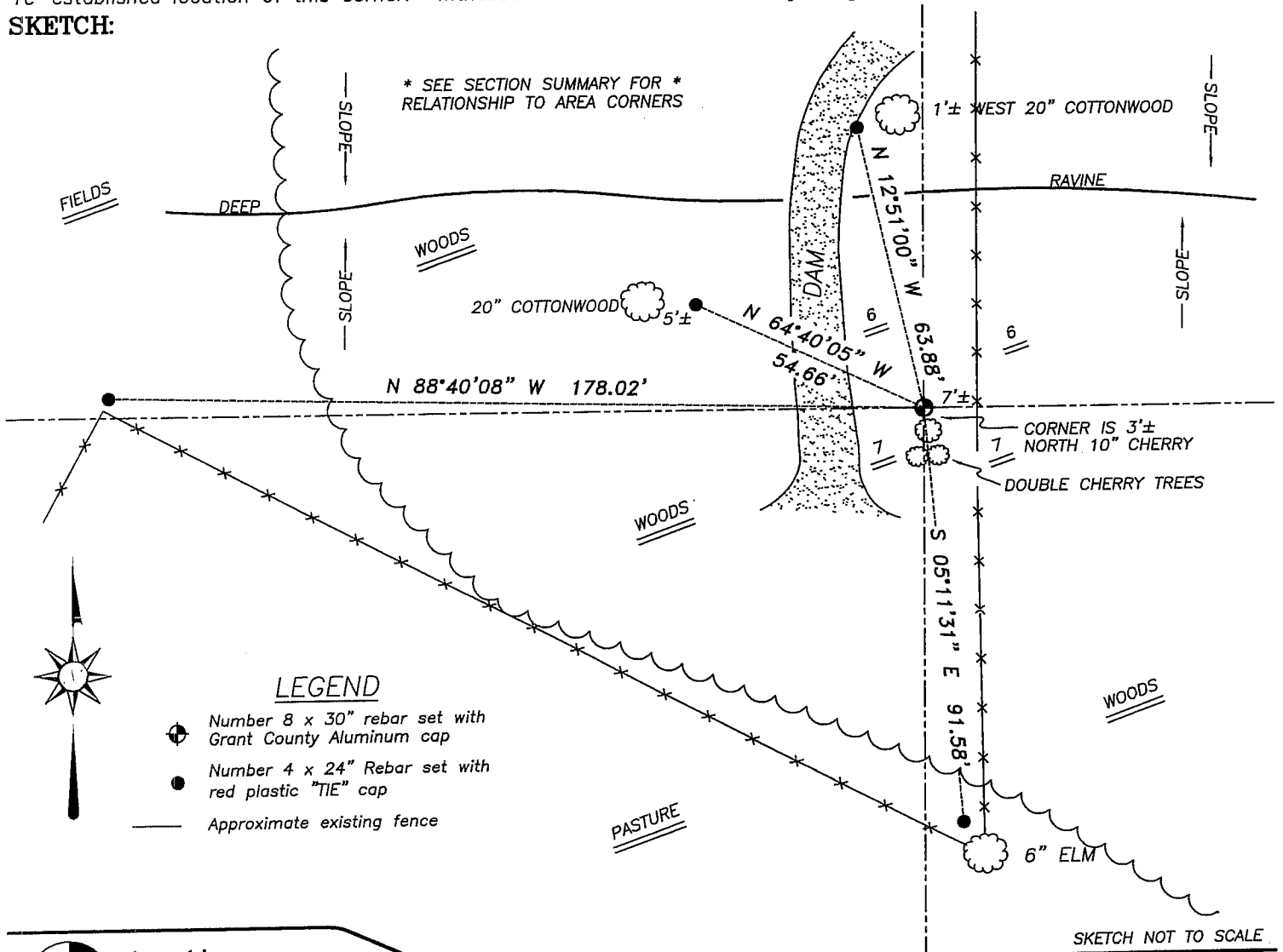
Corner was originally set in 1832 by Clark.
 In 1899 Sampson measured to the corner.

DESCRIPTION OF CORNER EVIDENCE FOUND

I reset the corner proportionately to Sampson's survey along the North-South Quarter lines occupational evidence. Verified this location using EDM & GPS methods.

DESCRIPTION OF CORNER AND WITNESS MONUMENTS, references and accessories used to perpetuate the original or re-established location of this corner. Witnesses to corner location Bobby Sedgwick & Brad Digman & Shane Austin

SKETCH:



LEGEND

- Number 8 x 30" rebar set with Grant County Aluminum cap
- Number 4 x 24" Rebar set with red plastic "TIE" cap
- Approximate existing fence

SKETCH NOT TO SCALE



Austin Engineering LLC

4211 HWY 81 E, LANCASTER, WI 53813
 PHONE 608-723-6363 FAX 608-723-6702

JOB NUMBER 05S168
 FIELDBOOK: TDSR, 2516
 G:\T5NR6W\01
 H:\TIE\T5NR5W\32

DRAWN BY: BJ HAZEN
 APPROVED: LL AUSTIN