

U.S. PUBLIC LAND SURVEY MONUMENT RECORD - GRANT COUNTY, WI

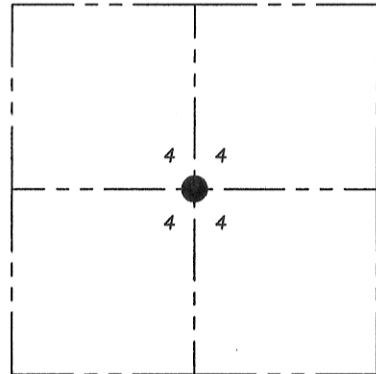
Section 4, Town 5 North Range 5 West, Village of Patch Grove

CERTIFICATE:

I, Aaron J. Austin, Wisconsin Professional Land Surveyor, do hereby certify that the corner location on this record was determined by me and/or under my direct supervision and that this U.S. Public Land Survey Monument Record is correct and complete to the best of my knowledge and belief.

Dated this 12th day of October, 2015.

Aaron J. Austin, S-2922



● = CORNER LOCATION

HISTORY OF CORNER ESTABLISHMENT:

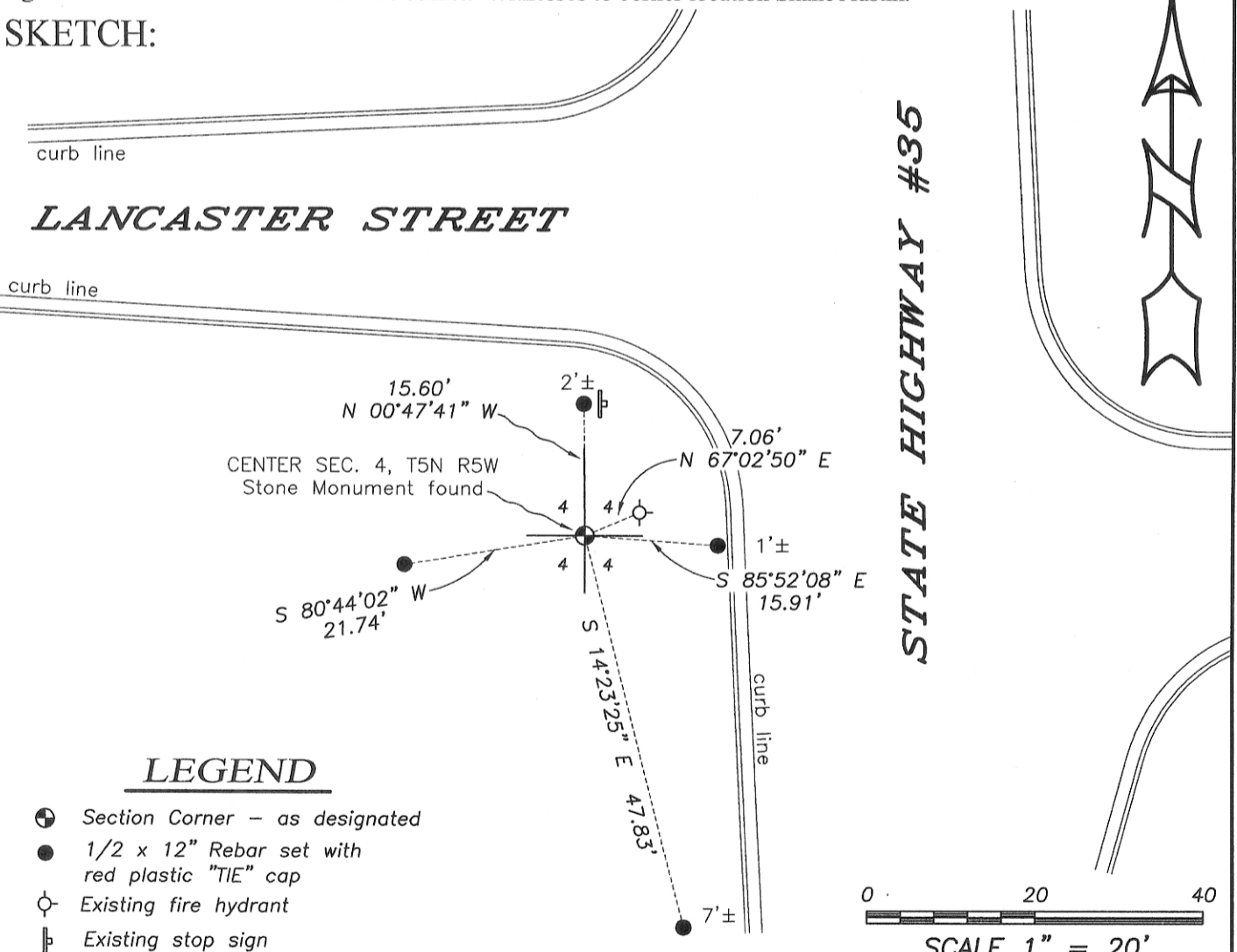
Corner was not set with original survey. 1987-Bruce Bowden prepared a U.S. Public Land Survey Monument Record for this corner. Several surveys have accepted the location of this Stone monument.

DESCRIPTION OF CORNER EVIDENCE FOUND:

I found the Stone Monument in place. It appears that the fire hydrant tied to by Bruce Bowden has been relocated. I set 4 new witness corners and verified this location by E.D.M. and G.P.S. methods.

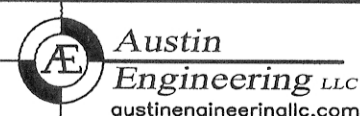
DESCRIPTION OF CORNER AND WITNESS MONUMENTS, references and accessories used to perpetuate the original or re-established location of this corner. Witnesses to corner location Shane Austin.

SKETCH:



LEGEND

- Section Corner - as designated
1/2 x 12" Rebar set with red plastic "TIE" cap
Existing fire hydrant
Existing stop sign



4211 HWY 81 E, LANCASTER, WI 53813
PHONE: 608-723-6363 FAX: 608-723-6702

JOB NO: 15s083
H:\CRD\15S083
H:\TIE\T5NR5W\16.5

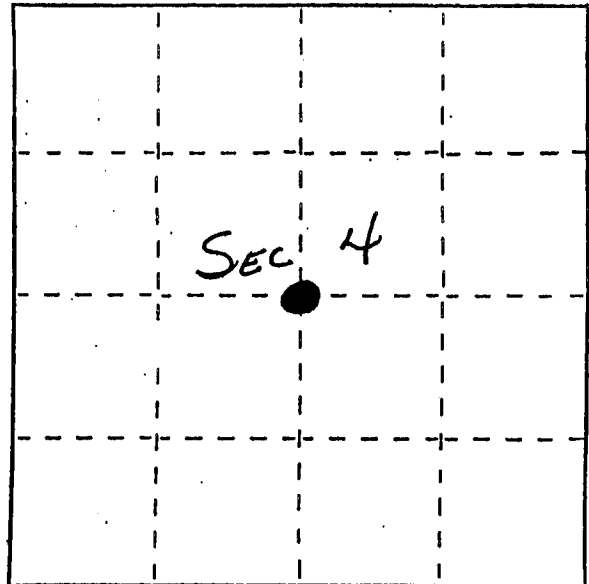
FIELDBOOK: TDSR
DRAWN BY: AJ AUSTIN
CREW: SW AUSTIN

U. S. PUBLIC LAND SURVEY MONUMENT RECORD

INSTRUCTIONS: This record shall show the location of the corner and shall include all of the following nine elements (a through i).

- (a) Identify the corner by reference to the U.S. public land survey system.
- = Corner monument restored.

CENTER of SECTION 4,
TOWN 5 NORTH, RANGE
5 WEST, VILLAGE of
PATCH GROVE, GRANT
COUNTY, WISCONSIN.



- (b) Describe any record evidence, monument evidence, occupational evidence, testimonial evidence or any other material evidence you considered, and whether the monument was found or placed.

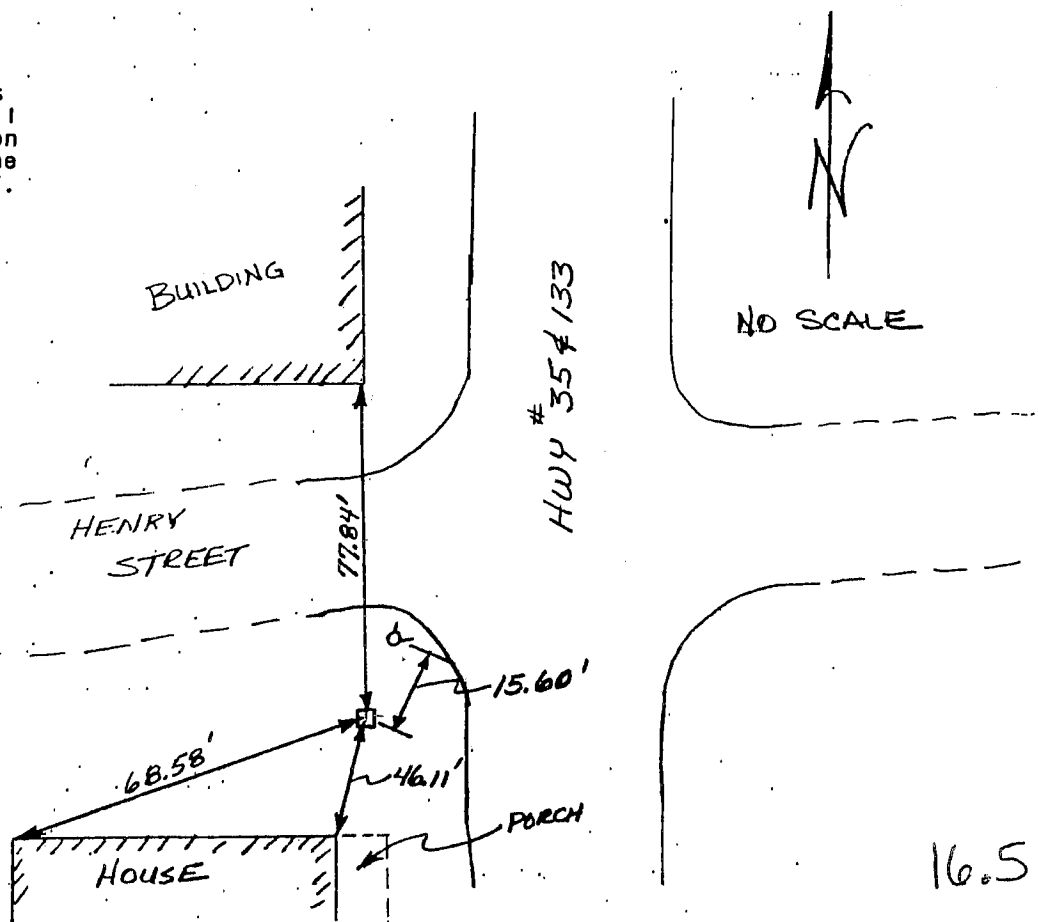
STONE MONUMENT FOUND IN PLACE AS RECORDED ON SUBDIVISIONS AND SURVEYS SINCE AT LEAST 1868. JAMES + ARTHUR MILLIN, LIFE TIME RESIDENTS OF PATCH GROVE, VERIFIED THAT THIS IS THE SAME STONE AND IN THE SAME LOCATION AS WHEN THEY WERE SHOWN AS YOUNG MEN BY ELDERS WHO WERE, IN TURN, LIFE TIME RESIDENTS OF PATCH GROVE.

- (c) In the plan view drawing below, provide reference ties to at least 4 witness monuments, or, if the location is within a municipality, to at least 2 witness monuments. (Witness monuments shall be made of concrete, natural stone, iron or other equally durable material.) Describe witness monuments.

- (d) Show a plan view drawing depicting the relevant monuments and reference ties which is sufficient in detail to enable accurate relocation of the corner monument if the corner monument is disturbed. Indicate north.

LEGEND

- FOUND STONE
- ♂ FIRE HYDRANT



RECEIVED

APR 3 1987

(e) Describe any material discrepancy between the location of the corner as restored or reestablished and the location of that corner as previously restored or reestablished by distance and direction. Show the discrepancy on the plan view drawing under (d), above. Show the distances between the corner as previously restored or reestablished and (1) the corner as restored or reestablished, and (2) to at least 2 of the witness monuments shown on the drawing in (d), above.

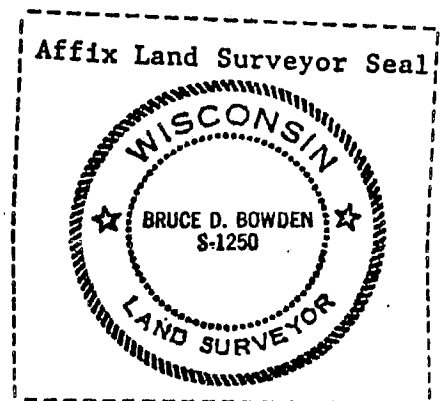
NONE.

(f) Was the corner restored through acceptance of (1) an obliterated evidence location, or, (2) a found perpetuated location?

(2) A FOUND PERPETUATED LOCATION

(g&h) Was the corner reestablished through lost corner proportionate methods? If so, show the method, including the directions and distances to other public land survey corners used as evidence or used for proportioning in determining the corner location?

No.



(1) I, BRUCE D. BOWDEN
(type or print name) certify that the corner location shown on this record was determined by me or under my direction and control and that this U.S. Public Land Survey Monument Record is correct and complete to the best of my knowledge and belief.

Bruce D. Bowden March 9, 1977
Signature Date