

U.S. PUBLIC LAND SURVEY MONUMENT RECORD

Section 4, Town 5 North Range 5 West, Town of Patch Grove, Grant County, Wisconsin

CERTIFICATE

I, Larry L. Austin, do hereby certify that the corner location on this record was determined by me and/or under my direct supervision and that this U.S. public land survey monument record is correct and complete to the best of my knowledge and belief.



● = CORNER LOCATION

Larry L. Austin
 Larry L. Austin, S-1903



HISTORY OF CORNER

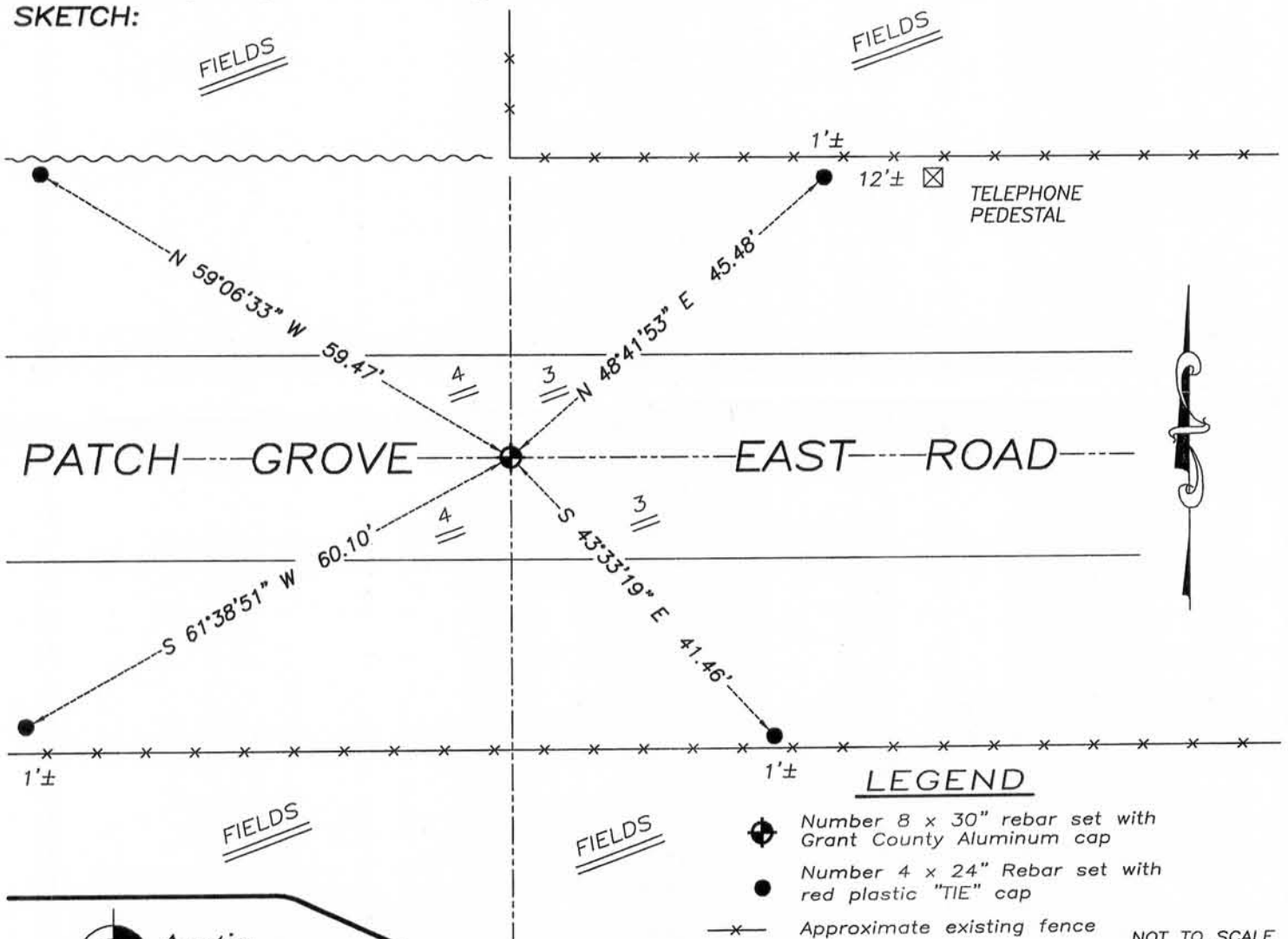
Corner was originally set in 1832 by Robert Clark.
 No other record of the corner was found.

CORNER EVIDENCE FOUND

I reset the corner at the location of a fence North and centerline of township road East-West. I verified this location by E.D.M. and G.P.S. methods.

DESCRIPTION OF CORNER AND WITNESS MONUMENTS, references and accessories used to perpetuate the original or re-established location of this corner. Witnesses to monument location Bobby Sedgwick & Brad Digman & Shane Austin

SKETCH:



LEGEND

- ⊕ Number 8 x 30" rebar set with Grant County Aluminum cap
- Number 4 x 24" Rebar set with red plastic "TIE" cap
- x- Approximate existing fence

NOT TO SCALE

Austin Engineering LLC
 austinengineeringllc.com
 4211 HWY 81 E, LANCASTER, WI 53813
 PHONE: 608-723-6363 FAX: 608-723-6702

JOB NUMBER 10S158-BREUER
 FIELDBOOK TOSH, 18-81
 G:\T5NR5W\04A
 H:\TIE\T5NR5W\17
 DRAWN BY: SW AUSTIN
 APPROVED: LL AUSTIN