

# U.S. PUBLIC LAND SURVEY MONUMENT RECORD

Section 12, Town 5 North Range 5 West, Town of Patch Grove, Grant County, Wisconsin

## CERTIFICATE

I, Larry L. Austin, do hereby certify that the corner location on this record was determined by me and/or under my direct supervision and that this U.S. public land survey monument record is correct and complete to the best of my knowledge and belief.

*Larry L. Austin*  
 Larry L. Austin, S-1903



date



● = CORNER LOCATION

## HISTORY OF CORNER

Corner was originally set in 1832 by Lucius Lyon.  
 No other record of the corner was found.

## CORNER EVIDENCE FOUND

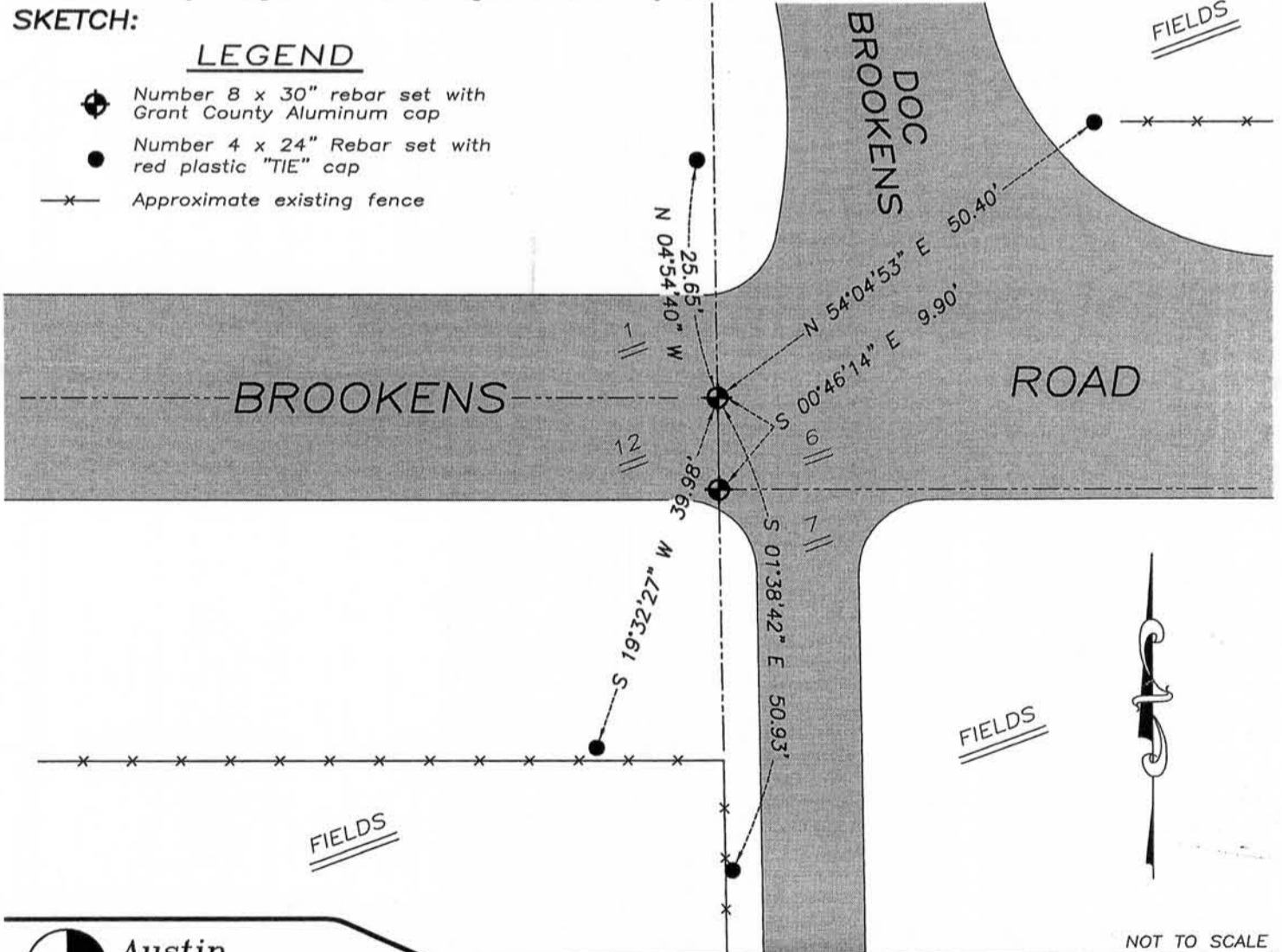
The only evidence I found for the location of the corner is an occupied location. I accepted this location and verified it with E.D.M. and G.P.S. methods.

DESCRIPTION OF CORNER AND WITNESS MONUMENTS, references and accessories used to perpetuate the original or re-established location of this corner. Witnesses to monument location Bobby Sedgwick & Brad Digman & Shelby Blindert.

## SKETCH:

### LEGEND

- Number 8 x 30" rebar set with Grant County Aluminum cap
- Number 4 x 24" Rebar set with red plastic "TIE" cap
- x- Approximate existing fence



NOT TO SCALE



**Austin Engineering LLC**

4211 HWY 81 E, LANCASTER, WI 53813  
 PHONE 608-723-6363 FAX 608-723-6702

JOB NUMBER 085120 GRUBEL  
 FIELDBOOK TOSH, 28T1  
 G:\T5NR4W\28  
 H:\TIE\T5NR5W\21

DRAWN BY: BW AUSTIN  
 APPROVED: LL AUSTIN

21

NOV 04 2011

